

# PARTS CATALOGUE

## F150TR-2009 (63P6)

---



2009/4/10

1H63P-110E1

( )

NEWS NO.	DATE	COMMENT
PE0-OM-080059	MAY,26,2008	MOD:FIG.23 PTT P/No. REVISION
PE0-OM-090032	March,19,2009	MOD:FIG.9,10,11 INTAKE ASSY LIST/ILLUSTRATION REVISION

F150TR  
PARTS CATALOGUE  
©2008 by Yamaha Motor Co., Ltd.  
1st edition, April 2008  
All rights reserved.  
Any reprinting or unauthorized use  
without the written permission of  
Yamaha Motor Co., Ltd.  
is expressly prohibited.  
Printed in Japan.

# FOREWORD

This Parts Catalogue is related to the parts for the model(s) on the cover page. When you are ordering replacement parts, please refer to this Parts Catalogue and quote both part numbers and part names correctly.

1. Modifications or additions which have been made after the issue of the Parts Catalogue will be announced in the Parts News.  
It is advisable that you make the necessary corrections to the Parts Catalogue according to the Parts News.

2. Abbreviations

The following abbreviations are used in this Parts Catalogue.

“UR” Use specified parts number.

“UN” Use as many as needed.

“AP” Alternate Parts

“LM” Locally Made (Parts need to be ordered locally)

“F#” Frame No. (Applicable machine No.)

“O/S” Over Size

3. The number of components for assembly

- Parts, which are to be supplied in an assembly, are listed with a dot (.) in front of the part name as shown below.
- The numeral appearing to the right of each component part indicates the quantity of parts for each assembly unit.

PART NO.	DESCRIPTION	Q'TY	REMARKS
2F5-83310-60	FRONT FLASHER LIGHT ASSY	2	
115-83311-60	.BULB (6V-18W)	1	

4. Applicable colours of graphics are represented in the “REMARKS” as shown below.

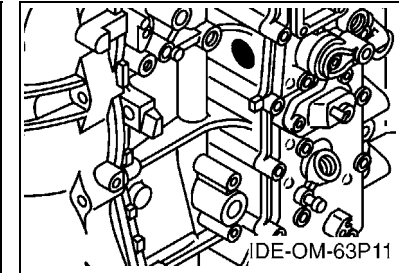
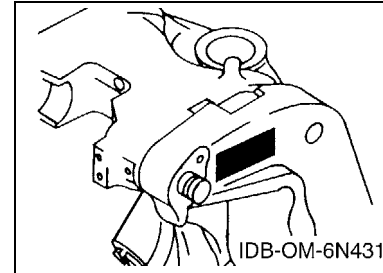
PART NO.	DESCRIPTION	Q'TY	REMARKS
2N4-24110-00-X5	FUEL TANK COMP.	2	MXR
3J1-24240-10	.GRAPHIC, FUEL TANK	1	FOR MXR

5. Note that the illustrations for reference in finding parts numbers are not to be used for assembling. When assembling, please use the applicable service manual.

6. The asterisk (\*) before a reference number indicates modified items after the first edition.

7. Applicable Serial No.

Engine Serial No.



8. Applicable Engine Starting Serial No.

Model	Serial No.	Model	Serial No.
F150	63P-1079661		

9. Applicable Colour Code

Abbreviation	Colour Name	Colour Code
DBN1	DARK BLUISH GRAY 1	008D

10. Quantity Column Information

Column No.	Name Of Q'ty Column	Applicable Model
1	TLR	F150TLR
2	TXR	F150TXR

# CONTENTS

TOP COWLING .....	1
CYLINDER & CRANKCASE 1 .....	2
CRANKSHAFT & PISTON .....	4
CYLINDER & CRANKCASE 2 .....	5
CYLINDER & CRANKCASE 3 .....	7
VALVE .....	9
INTAKE 1 .....	11
INTAKE 2 .....	12
INTAKE 3 .....	13
FUEL INJECTION PUMP 1 .....	15
FUEL INJECTION PUMP 2 .....	16
FUEL 1 .....	17
FUEL 2 .....	19
GENERATOR .....	20
ELECTRICAL 1 .....	21
ELECTRICAL 2 .....	22
ELECTRICAL 3 .....	24
STARTING MOTOR .....	26
BOTTOM COWLING .....	28
CONTROL .....	30
BRACKET 1 .....	33
BRACKET 2 .....	35
POWER TRIM & TILT ASSY 1 .....	37
POWER TRIM & TILT ASSY 2 .....	39
UPPER CASING .....	41
OIL PAN .....	43
LOWER CASING & DRIVE 1 .....	45
LOWER CASING & DRIVE 2 .....	49
STEERING GUIDE .....	51
REPAIR KIT 1 .....	52
REPAIR KIT 2 .....	53

## INDEX

NUMERICAL INDEX .....	55
-----------------------	----

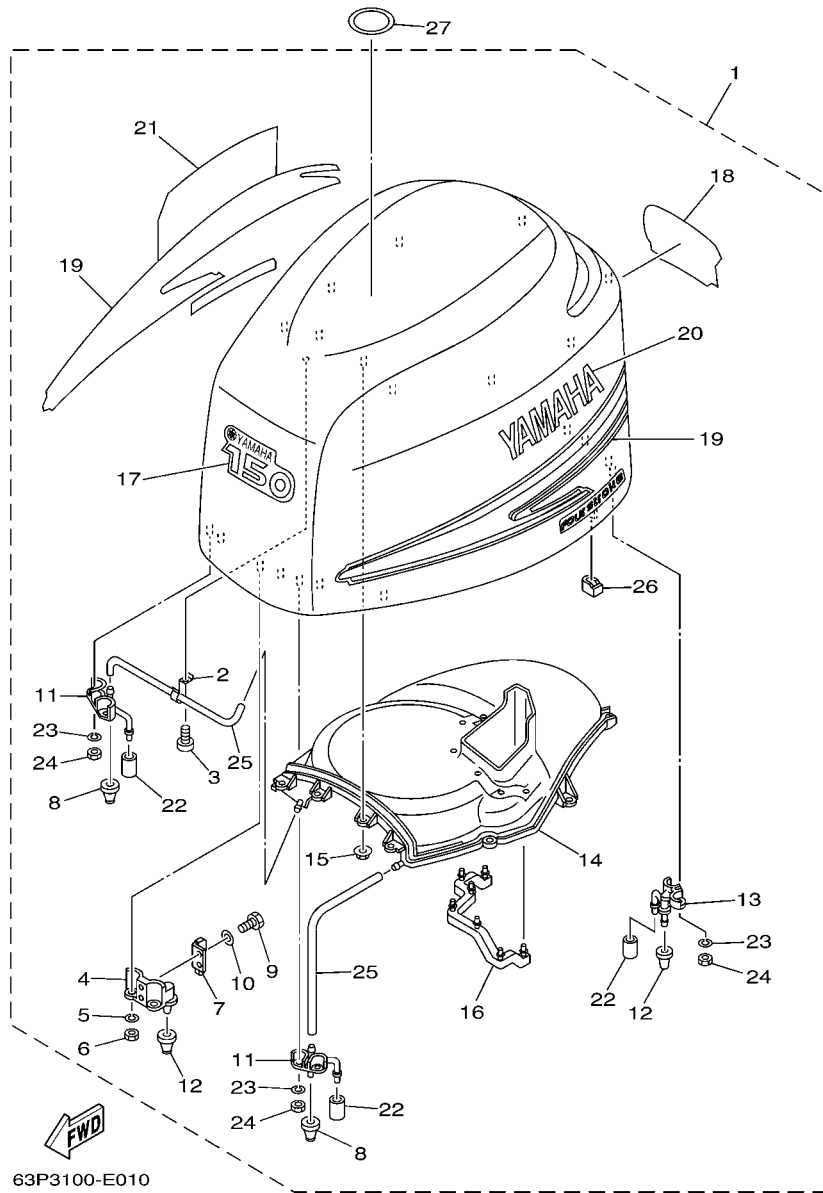
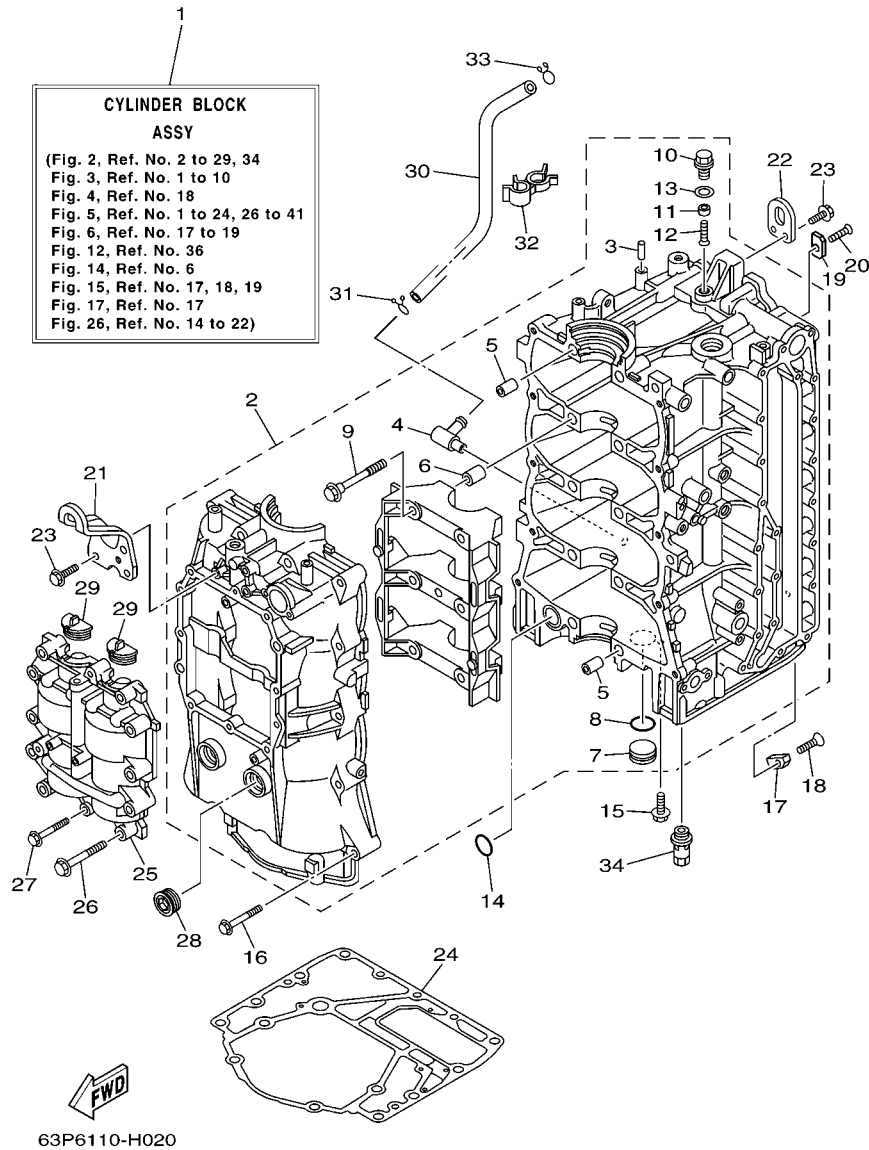


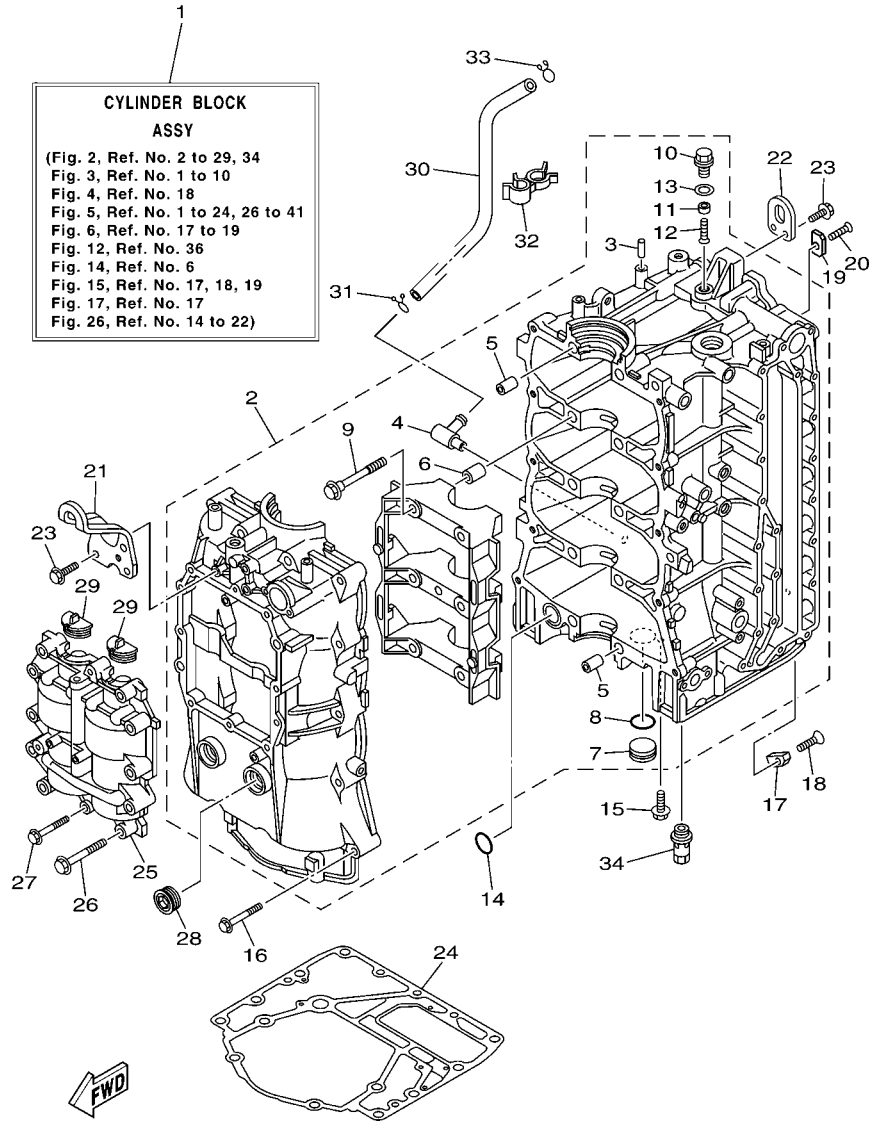
FIG. 1 TOP COWLING

REF. NO.	PART NO.	DESCRIPTION	TLR	TXR	REMARKS
1	63P-42610-01-8D	TOP COWLING ASSY	1	1	
2	90465-10032	.CLAMP	1	1	
3	97780-50620	.SCREW, TAPPING	1	1	
4	63P-42647-00-94	.HOLDER, CLAMP BAND	2	2	
5	92990-06100	.WASHER, SPRING	4	4	
6	95380-06600	.NUT, HEXAGON	4	4	
7	60V-42651-01	.HOOK	2	2	
8	69J-42663-00	.DAMPER	2	2	
9	97095-06016	.BOLT	4	4	
10	92995-06600	.WASHER	4	4	
11	63P-42643-00-94	.PLATE, CLAMP	2	2	
12	68F-42663-00	.DAMPER	4	4	
13	63P-42644-00-94	.PLATE, CLAMP 2	2	2	
14	63P-42613-00	.MOLDING, AIR DUCT	1	1	
15	90179-06M24	.NUT	10	10	
16	63P-42617-00	.DAMPER, FORM	1	1	
17	63P-42677-00	.GRAPHIC, FRONT	1	1	
18	63P-42678-00	.GRAPHIC, REAR	1	1	
19	63P-W0070-00	.GRAPHIC SET	1	1	
20	63P-42681-00	.MARK, COWLING	1	1	
21	63P-42682-00	.MARK, COWLING	1	1	
22	67F-13448-00	.CAP	4	4	
23	92990-06100	.WASHER, SPRING	8	8	
24	95380-06600	.NUT, HEXAGON	8	8	
25	90445-11020	.HOSE (L400)	2	2	
26	63P-42662-00	.DAMPER	4	4	
27	67F-13434-10	LABEL, CAUTION	1	1	



**FIG. 2 CYLINDER & CRANKCASE 1**

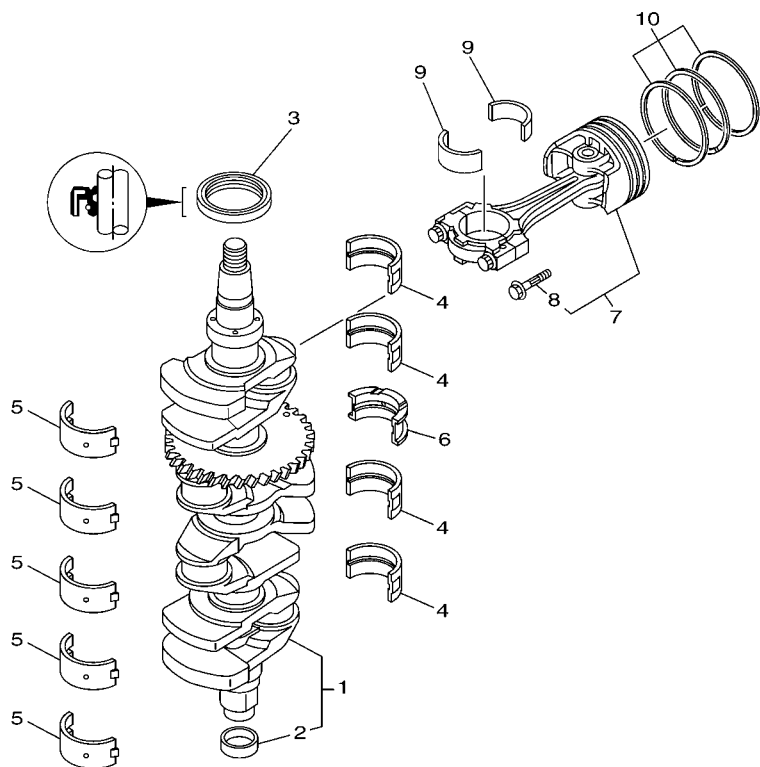
REF. NO.	PART NO.	DESCRIPTION	TLR	TXR	REMARKS
1	63P-W009B-05-9S	CYLINDER BLOCK ASSY	1	1	
2	63P-W1510-03-9S	CRANKCASE ASSY	1	1	
3	93606-12019	.PIN, DOWEL	1	1	
4	63P-11372-00	.NIPPLE, HOSE	1	1	
5	91814-18001	.PIN, DOWEL	4	4	
6	91814-18001	.PIN, DOWEL	6	6	
7	90338-25004	.PLUG	1	1	
8	93210-25647	.O-RING	1	1	
9	90105-10071	.BOLT, FLANGE	10	10	
10	63P-11197-00	.PLUG, BLIND	1	1	
11	63P-11325-21	.ANODE	1	1	
12	98780-05016	.SCREW, FLAT HEAD	1	1	
13	90430-14115	.GASKET	1	1	
14	93210-25552	O-RING	1	1	
15	90119-06M81	BOLT, WITH WASHER	1	1	
16	90119-08M66	BOLT, WITH WASHER	10	10	
17	63P-11325-01	ANODE	1	1	
18	90151-06M02	SCREW, COUNTERSUNK	1	1	
19	63P-11325-11	ANODE	4	4	
20	90151-06M02	SCREW, COUNTERSUNK	4	4	
21	63P-11119-00	HANGER, ENGINE	1	1	
22	68F-11119-00	HANGER, ENGINE	1	1	
23	90119-06MA2	BOLT, WITH WASHER	5	5	
24	63P-11351-00	GASKET, CYLINDER	1	1	
25	63P-11500-02	BALANCER ASSY	1	1	
26	90119-08M66	BOLT, WITH WASHER	10	10	
27	90119-06MA6	BOLT, WITH WASHER	2	2	



**FIG. 2 CYLINDER & CRANKCASE 1**

REF. NO.	PART NO.	DESCRIPTION	TLR	TXR			REMARKS
28	90340-27129	PLUG, STRAIGHT SCREW	2	2			
29	63P-11512-00	SEAL, CRANK COVER	2	2			
30	63P-11377-00	HOSE	1	1			
31	90467-15M14	CLIP	1	1			
32	90464-16013	CLAMP	1	1			
33	90467-15M14	CLIP	1	1			
34	63P-13490-00	RELIEF VALVE ASSY	1	1			
-----							
-----							
-----							
-----							
-----							
-----							
-----							
-----							
-----							
-----							
-----							
-----							
-----							
-----							
-----							

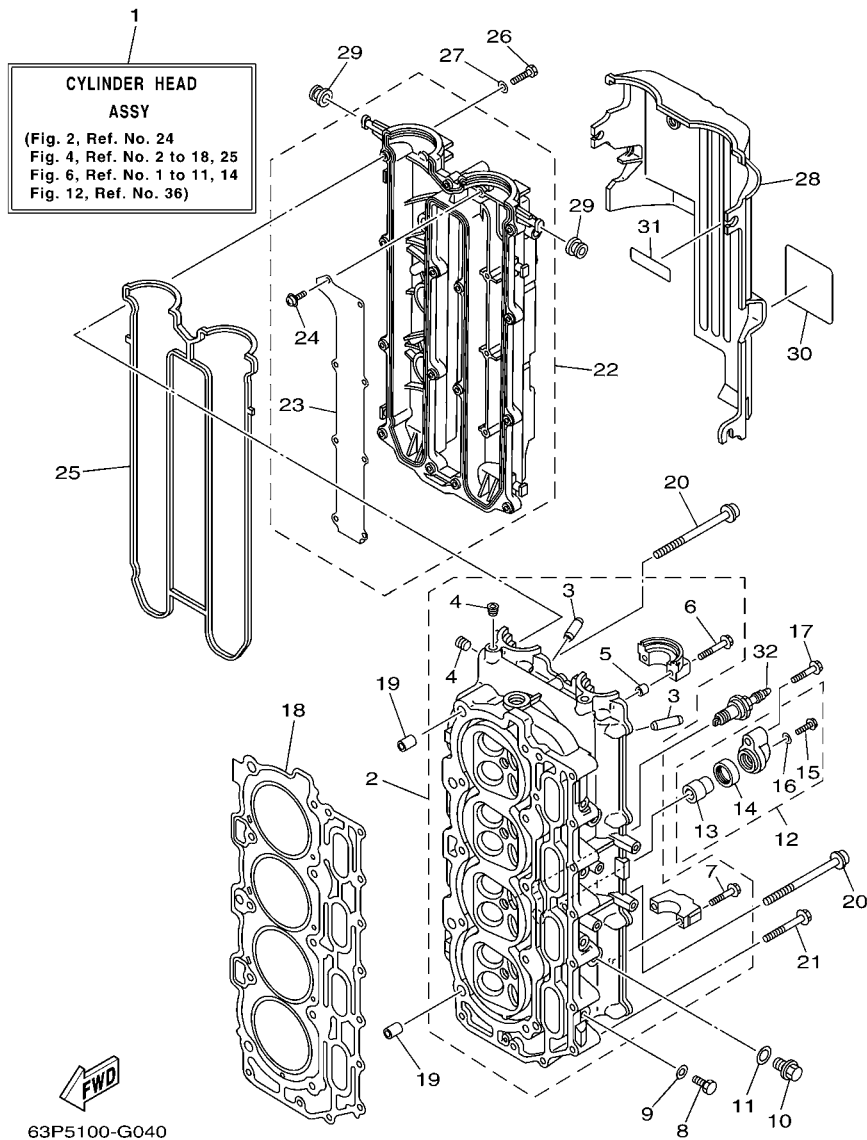
**FIG. 3 CRANKSHAFT & PISTON**



**FWD**  
63P6110-H030

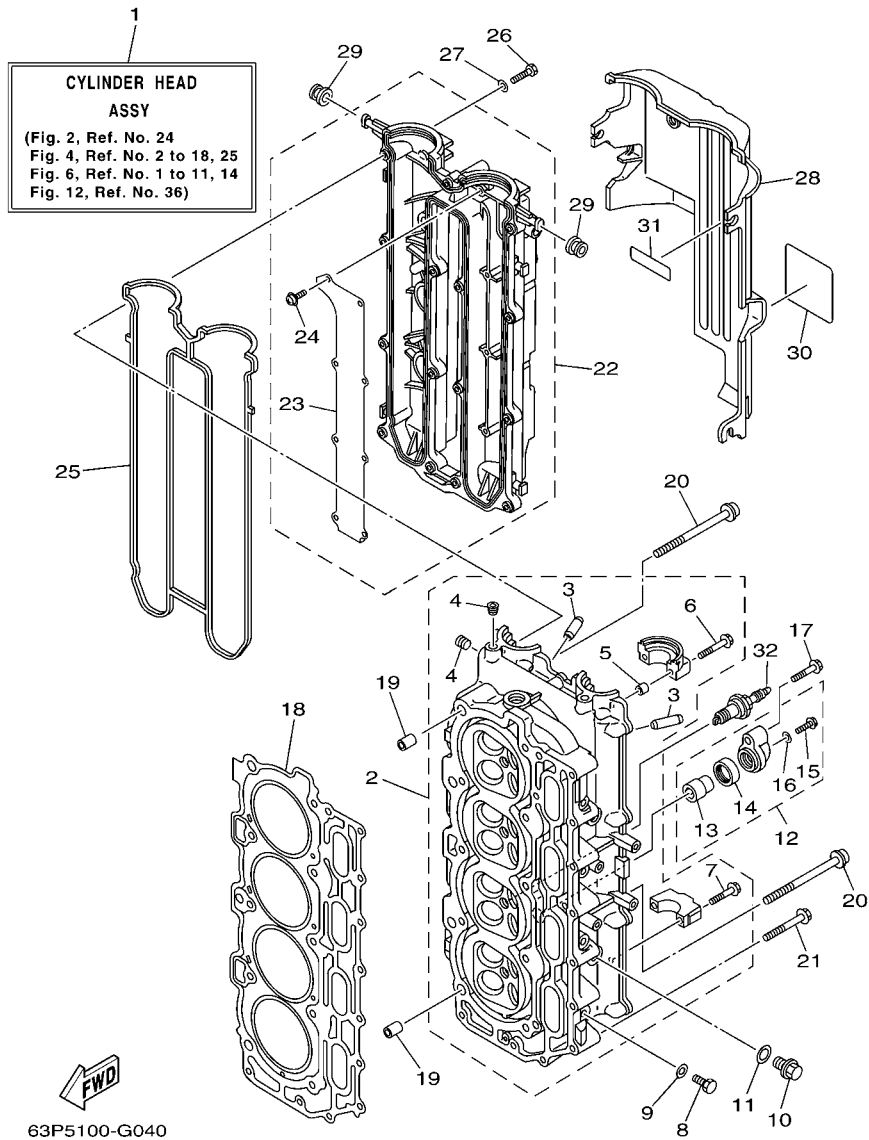
REF. NO.	PART NO.	DESCRIPTION	TLR	TXR	REMARKS
1	63P-11410-02	CRANKSHAFT	1	1	
2	69J-11478-00	.COLLAR	1	1	
3	93102-60004	OIL SEAL	1	1	
4	63P-11416-02	PLANE BEARING, CRANKSHAFT 1	4	4	UR GREEN
	63P-11416-12	PLANE BEARING, CRANKSHAFT 1	4	4	UR RED
	63P-11416-22	PLANE BEARING, CRANKSHAFT 1	4	4	UR YELLOW
5	63P-11417-02	PLANE BEARING, CRANKSHAFT 2	5	5	UR GREEN
	63P-11417-12	PLANE BEARING, CRANKSHAFT 2	5	5	UR RED
	63P-11417-22	PLANE BEARING, CRANKSHAFT 2	5	5	UR YELLOW
	63P-11417-32	PLANE BEARING, CRANKSHAFT 2	5	5	UR BLUE/ GREEN
6	63P-11426-00	PLANE BEARING, CRANKSHAFT 1	1	1	UR GREEN
	63P-11426-10	PLANE BEARING, CRANKSHAFT 1	1	1	UR RED
	63P-11426-20	PLANE BEARING, CRANKSHAFT 1	1	1	UR YELLOW
7	63P-W1164-01	PISTON/CONROD ASSY(STD)	4	4	
	63P-W1164-10	PISTON/CON-ROD ASSY(0.25MM OS)	4	4	AP
8	63P-11654-01	.BOLT, CONNECTING ROD	2	2	
9	63P-11656-01	PLANE BEARING, CONNECTING ROD	8	8	UR GREEN
	63P-11656-11	PLANE BEARING, CONNECTING ROD	8	8	UR BLUE
	63P-11656-21	PLANE BEARING, CONNECTING ROD	8	8	UR RED
10	63P-11603-01	PISTON RING SET (STD)	4	4	
	63P-11604-00	PISTON RING SET (0.25MM O/S)	4	4	AP





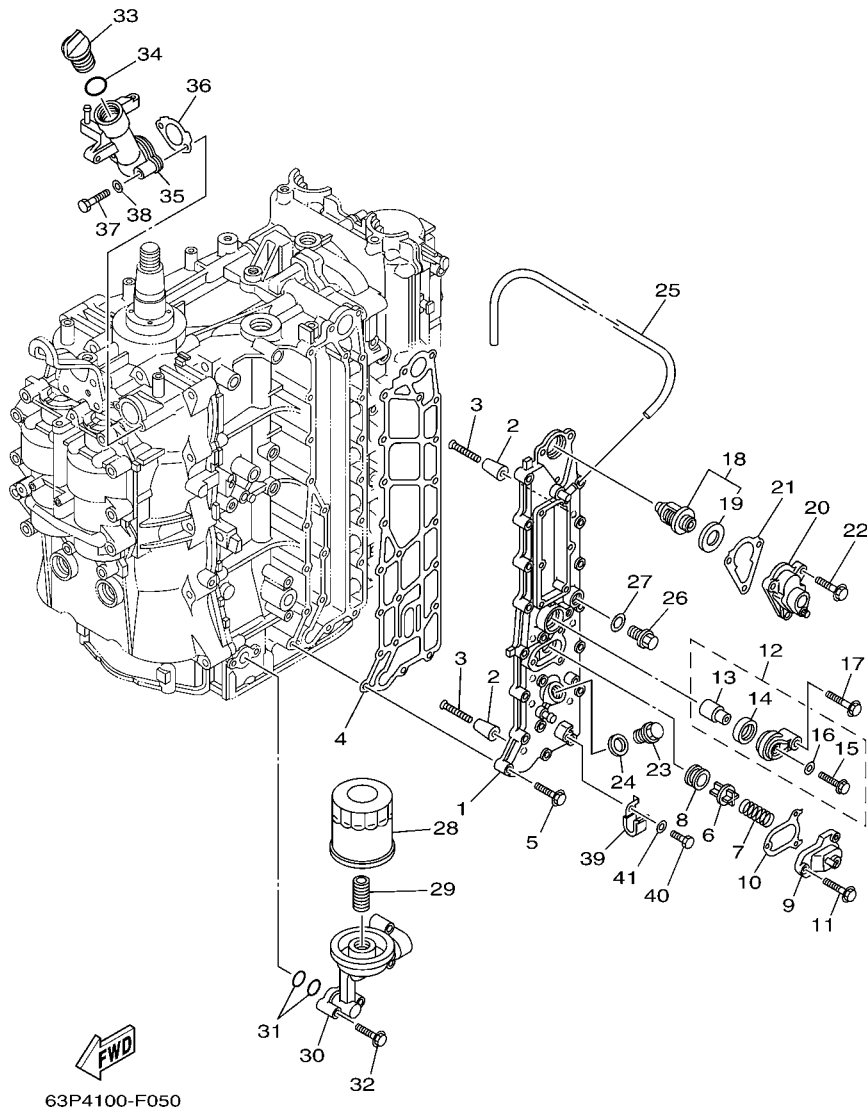
**FIG. 4 CYLINDER & CRANKCASE 2**

REF. NO.	PART NO.	DESCRIPTION	TLR	TXR	REMARKS
1	63P-W009A-02-9S	CYLINDER HEAD ASSY	1	1	
2	63P-11110-00-9S	CYLINDER HEAD ASSY	1	1	
3	69J-11133-10	.GUIDE, VALVE 1	16	16	
4	90344-51019	.PLUG, TAPER SCREW	3	3	
5	91809-08006	.PIN, DOWEL	4	4	
6	90119-07235	.BOLT/WASHER-CAM CAPS	4	4	
7	90119-07234	.BOLT, WITH WASHER	16	16	
8	97095-08014	BOLT	4	4	
9	90430-08143	GASKET	4	4	
10	90340-14M06	PLUG, STRAIGHT SCREW	2	2	
11	90430-14115	GASKET	2	2	
12	69J-11301-10	ANODE COVER ASSY	2	2	
13	68V-11325-02	.ANODE	1	1	
14	67F-11328-00	.GROMMET, ANODE	1	1	
15	90105-06M07	.BOLT, FLANGE	1	1	
16	90430-06M03	.GASKET	1	1	
17	97575-08540	BOLT, WITH WASHER	2	2	
18	63P-11181-00	GASKET, CYLINDER HEAD 1	1	1	
19	90387-10M08	COLLAR	2	2	
20	90155-10001	SCREW, FLAT FILLISTER	10	10	
21	90119-08M91	BOLT, WITH WASHER	10	10	
22	63P-11191-00-9S	COVER, CYLINDER HEAD 1	1	1	
23	63P-11135-00	.PLATE, BREATHER 3	1	1	
24	97607-04208	.SCREW, WITH WASHER	8	8	
25	63P-11193-00	GASKET, HEAD COVER 1	1	1	
26	97095-06030	BOLT	13	13	
27	92995-06600	WASHER	13	13	



**FIG. 4 CYLINDER & CRANKCASE 2**

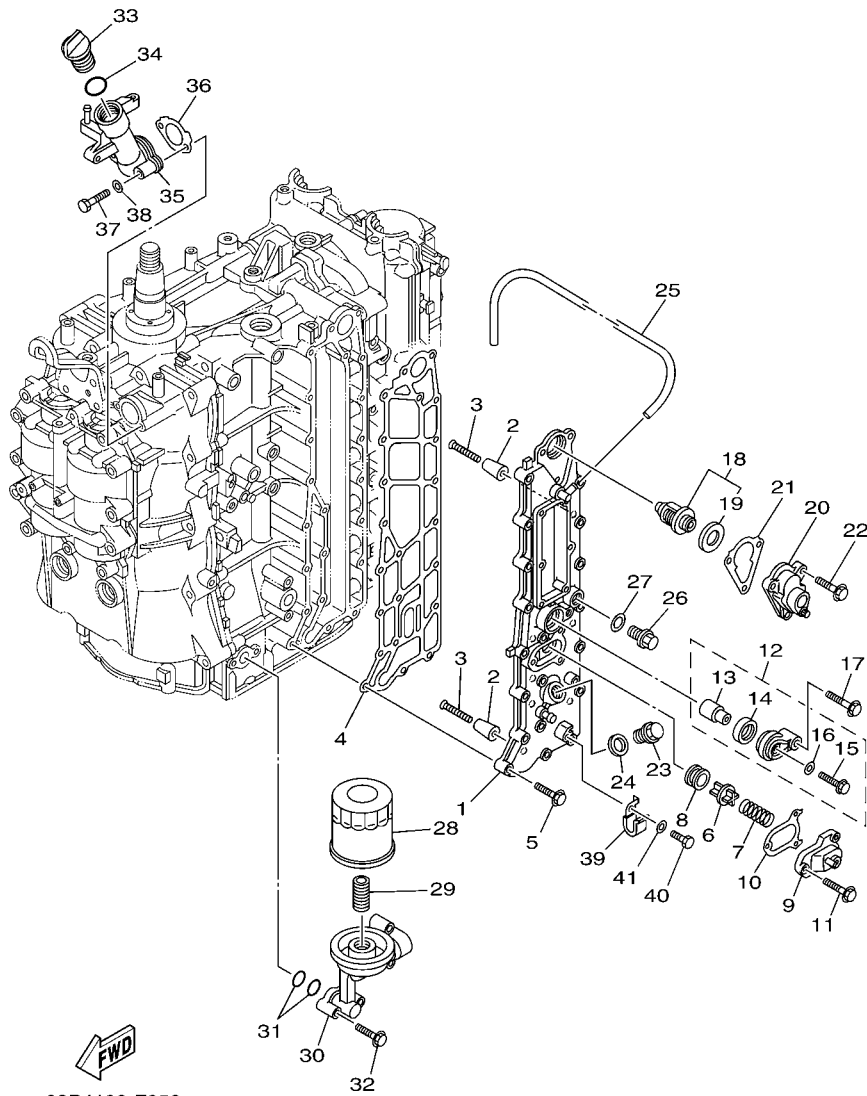
REF. NO.	PART NO.	DESCRIPTION	TLR	TXR				REMARKS
28	63P-11192-01	COVER, CYLINDER HEAD 2	1	1				
29	90480-12072	GROMMET	5	5				
30	63P-83626-00	MARK 6	1	1				
31	67F-12138-40	MARK, CAUTION	1	1				
32	94702-00391	PLUG, SPARK (NGK LFR5A-11)	4	4				
-----								
-----								
-----								
-----								
-----								
-----								
-----								
-----								
-----								



63P4100-F050

FIG. 5 CYLINDER & CRANKCASE 3

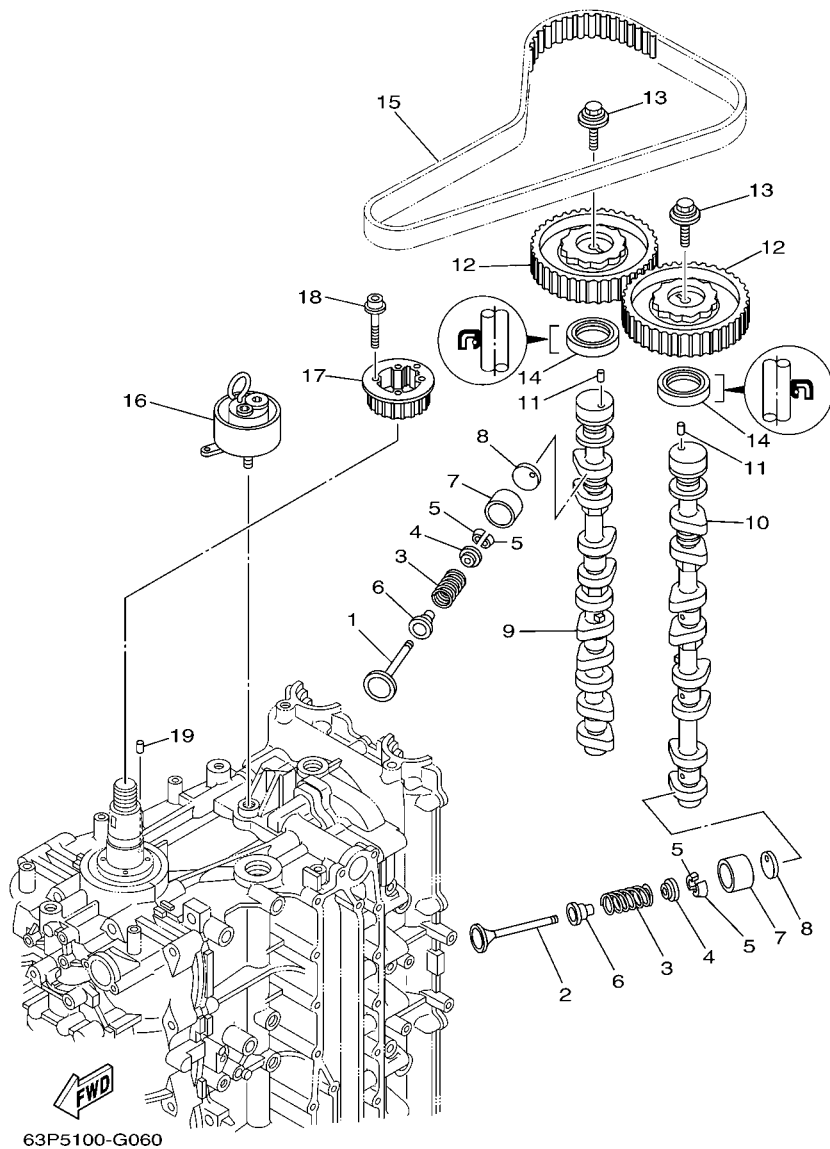
REF. NO.	PART NO.	DESCRIPTION	TLR	TXR		REMARKS
1	63P-41113-03-9S	OUTER COVER, EXHAUST	1	1		
2	68T-11325-00	ANODE	8	8		
3	90151-05M05	SCREW, COUNTERSUNK	8	8		
4	63P-41114-A1	GASKET, EXHAUST OUTER COVER	1	1		
5	90119-06MA4	BOLT, WITH WASHER	19	19		
6	6G5-12416-00	VALVE, PRESSURE CONTROL	1	1		
7	90501-16M11	SPRING, COMPRESSION	1	1		
8	90480-20M05	GROMMET	1	1		
9	67F-1246A-01-9S	COVER 1	1	1		
10	67F-12435-A0	GASKET	1	1		
11	90119-06MA2	BOLT, WITH WASHER	3	3		
12	69J-11301-10	ANODE COVER ASSY	1	1		
13	68V-11325-02	.ANODE	1	1		
14	67F-11328-00	.GROMMET, ANODE	1	1		
15	90105-06M07	.BOLT, FLANGE	1	1		
16	90430-06M03	.GASKET	1	1		
17	97575-08540	BOLT, WITH WASHER	1	1		
18	67F-12411-01	THERMOSTAT	1	1		
19	67F-12412-00	.SEAL, THERMOSTAT	1	1		
20	63P-1240H-01-9S	COVER ASSEMBLY	1	1		
21	63P-12414-00	GASKET, COVER	1	1		
22	90119-06MA4	BOLT, WITH WASHER	3	3		
23	90340-18M09	PLUG, STRAIGHT SCREW	1	1		
24	90430-18130	GASKET	1	1		
25	90445-10027	HOSE (L670)	1	1		
26	90340-14M06	PLUG, STRAIGHT SCREW	1	1		
27	90430-14115	GASKET	1	1		



63P4100-F050

FIG. 5 CYLINDER & CRANKCASE 3

REF. NO.	PART NO.	DESCRIPTION	TLR	TXR	REMARKS
28	69J-13440-01	ELEMENT ASSY, OIL CLEANER	1	1	
29	69J-12858-00	BOLT, UNION	1	1	
30	63P-13446-00-9S	CONNECTOR	1	1	
31	93210-19MJ1	O-RING	2	2	
32	97575-06540	BOLT, WITH WASHER	4	4	
33	6G8-15363-00	PLUG, OIL	1	1	
34	93210-24M79	O-RING	1	1	
35	63P-15319-00-9S	JOINT	1	1	
36	63P-15364-A0	GASKET, OIL PLUG	1	1	
37	97095-06045	BOLT	2	2	
38	92995-06600	WASHER	2	2	
39	90462-06013	CLAMP	1	1	
40	97095-06012	BOLT	1	1	
41	92995-06600	WASHER	1	1	



63P5100-G060

FIG. 6 VALVE

REF. NO.	PART NO.	DESCRIPTION	TLR	TXR	REMARKS
1	69J-12111-00	VALVE, INTAKE	8	8	
2	69J-12121-00	VALVE, EXHAUST	8	8	
3	69J-12113-01	SPRING, VALVE INNER	16	16	
4	69J-12117-01	RETAINER, VALVE SPRING	16	16	
5	69J-12118-00	COTTER, VALVE	32	32	
6	69J-12119-00	SEAL, VALVE STEM	16	16	
7	69J-12153-00	LIFTER, VALVE	16	16	
8	6S1-12168-00	PAD, ADJUSTING (2.320)	16	16	UR
	6S1-12168-10	PAD, ADJUSTING (2.340)	16	16	UR
	6S1-12168-20	PAD, ADJUSTING (2.360)	16	16	UR
	6S1-12168-30	PAD, ADJUSTING (2.380)	16	16	UR
	6S1-12168-40	PAD, ADJUSTING (2.400)	16	16	UR
	6S1-12168-50	PAD, ADJUSTING (2.420)	16	16	UR
	6S1-12168-60	PAD, ADJUSTING (2.440)	16	16	UR
	6S1-12168-70	PAD, ADJUSTING (2.460)	16	16	UR
	6S1-12168-80	PAD, ADJUSTING (2.480)	16	16	UR
	6S1-12168-90	PAD, ADJUSTING (2.500)	16	16	UR
	6S1-12168-A0	PAD, ADJUSTING (2.520)	16	16	UR
	6S1-12168-B0	PAD, ADJUSTING (2.540)	16	16	UR
	6S1-12168-C0	PAD, ADJUSTING (2.560)	16	16	UR
	6S1-12168-D0	PAD, ADJUSTING (2.580)	16	16	UR
	6S1-12168-E0	PAD, ADJUSTING (2.600)	16	16	UR
	6S1-12168-F0	PAD, ADJUSTING (2.620)	16	16	UR
	6S1-12168-G0	PAD, ADJUSTING (2.640)	16	16	UR
	6S1-12168-H0	PAD, ADJUSTING (2.660)	16	16	UR
	6S1-12168-J0	PAD, ADJUSTING (2.680)	16	16	UR
	6S1-12168-K0	PAD, ADJUSTING (2.700)	16	16	UR

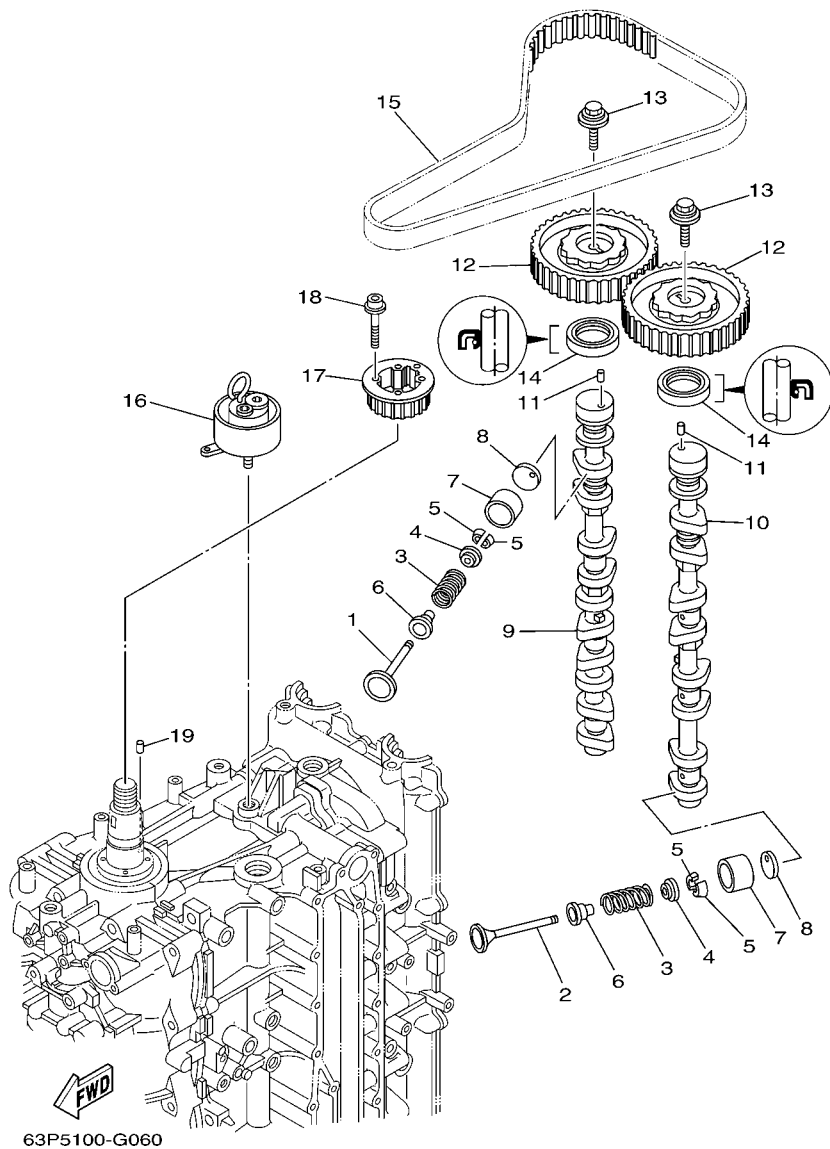


FIG. 6 VALVE

REF. NO.	PART NO.	DESCRIPTION	TLR	TXR	REMARKS
8	6S1-12168-L0	PAD, ADJUSTING (2.720)	16	16	UR
	6S1-12168-M0	PAD, ADJUSTING (2.740)	16	16	UR
	6S1-12168-N0	PAD, ADJUSTING (2.760)	16	16	UR
	6S1-12168-P0	PAD, ADJUSTING (2.780)	16	16	UR
	6S1-12168-R0	PAD, ADJUSTING (2.800)	16	16	UR
	6S1-12168-S0	PAD, ADJUSTING (2.820)	16	16	UR
	6S1-12168-T0	PAD, ADJUSTING (2.840)	16	16	UR
	6S1-12168-U0	PAD, ADJUSTING (2.860)	16	16	UR
	6S1-12168-V0	PAD, ADJUSTING (2.880)	16	16	UR
	6S1-12168-W0	PAD, ADJUSTING (2.900)	16	16	UR
	6S1-12168-X0	PAD, ADJUSTING (2.920)	16	16	UR
	6S1-12168-Y0	PAD, ADJUSTING (2.940)	16	16	UR
	6S1-12169-00	PAD, ADJUSTING (2.960)	16	16	UR
9	63P-12171-00	CAMSHAFT 1	1	1	
10	63P-12181-00	CAMSHAFT 2	1	1	
11	93605-10108	PIN, DOWEL	2	2	
12	63P-11537-00	GEAR, DRIVEN	2	2	
13	68V-12157-00	BOLT	2	2	
14	93102-38M59	OIL SEAL	2	2	
15	63P-46241-00	V-BELT	1	1	
16	63P-11590-01	TENSIONER ASSY	1	1	
17	63P-11536-01	GEAR, DRIVE	1	1	
18	90110-05020	BOLT, HEXAGON SOCKET HEAD	4	4	
19	93605-17002	PIN, DOWEL	1	1	

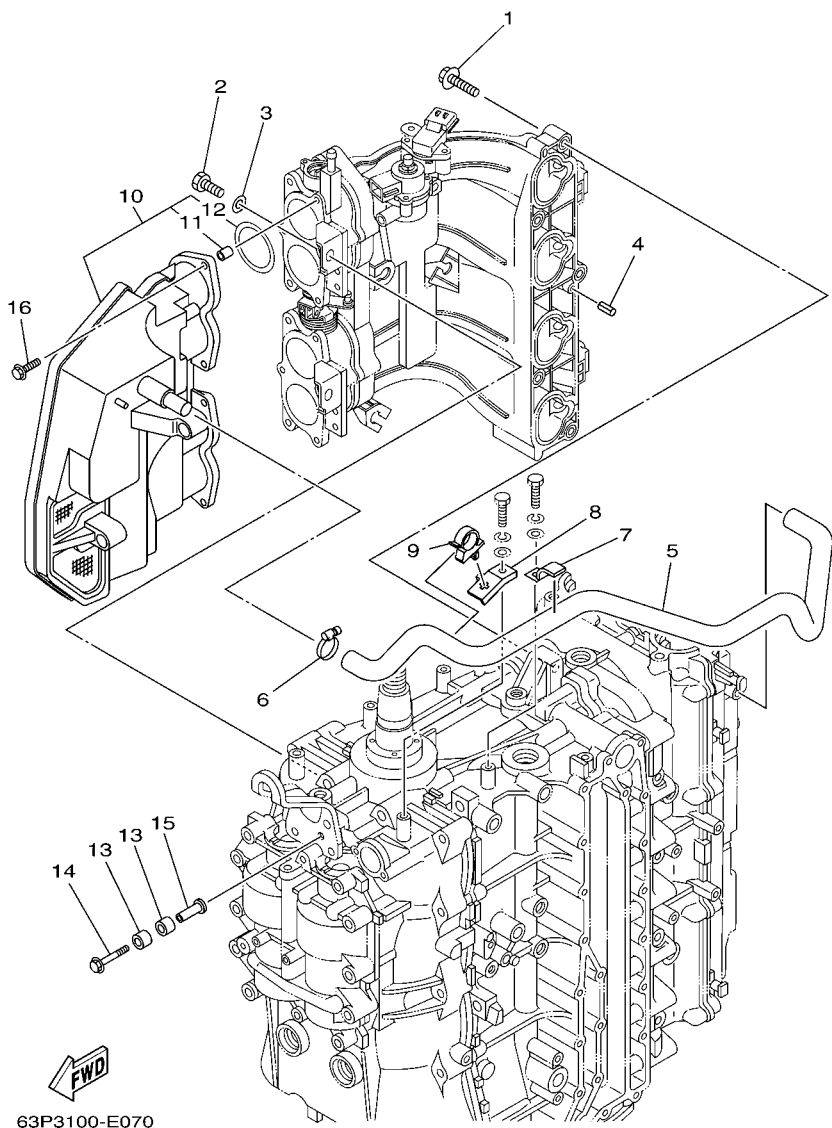
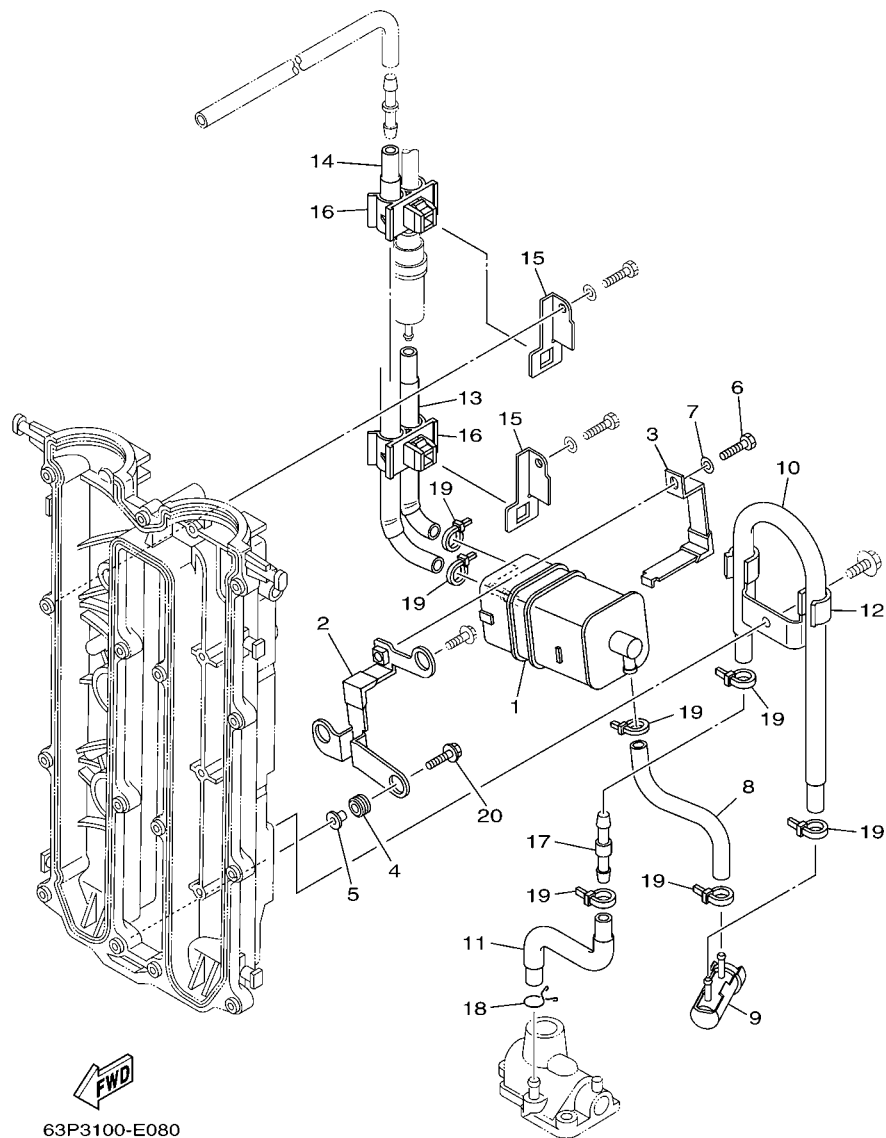


FIG. 7 INTAKE 1

REF. NO.	PART NO.	DESCRIPTION	TLR	TXR	REMARKS
1	97575-08540	BOLT, WITH WASHER	5	5	
2	97013-08020	BOLT	2	2	
3	92903-08600	WASHER, PLATE	2	2	
4	91690-50014	PIN, SPRING	2	2	
5	63P-15373-00	PIPE, BREATHER	1	1	
6	90450-22M14	HOSE CLAMP ASSY	1	1	
7	90462-10023	CLAMP	1	1	
8	63P-15378-00	HOLDER	1	1	
9	90464-20006	CLAMP	1	1	
10	63P-14440-00	SILENCER ASSY, INTAKE	1	1	
11	63P-14449-00	.COLLAR	6	6	
12	63P-14457-00	.SEAL	4	4	
13	90386-08001	BUSH	4	4	
14	90119-06076	BOLT, WITH WASHER	2	2	
15	90387-06038	COLLAR	2	2	
16	90119-06M82	BOLT, WITH WASHER	6	6	



**FIG. 8 INTAKE 2**

REF. NO.	PART NO.	DESCRIPTION	TLR	TXR	REMARKS
1	6P2-24170-00	CANISTER ASSY	1	1	
2	63P-2134X-00	BRACKET, CANISTER	1	1	
3	63P-2419A-00	HOLDER	1	1	
4	90480-10M23	GROMMET	3	3	
5	90387-06M60	COLLAR	3	3	
6	97095-06016	BOLT	1	1	
7	92995-06600	WASHER	1	1	
8	64P-24313-00	PIPE 3	1	1	
9	69J-24502-00	FILTER, FUEL	1	1	
10	64P-24312-00	PIPE 2	1	1	
11	64P-24311-00	PIPE, FUEL 1	1	1	
12	63P-24367-00	CLAMP, FUEL PIPE 2	1	1	
13	64P-24315-00	PIPE 5	1	1	
14	64P-24314-00	PIPE 4	1	1	
15	63P-24364-00	STAY	2	2	
16	90464-11012	CLAMP	2	2	
17	6E5-24379-00	PIPE, JOINT 4	1	1	
18	90467-09M09	CLIP	1	1	
19	90465-11M10	CLAMP	7	7	
20	90119-06135	BOLT, WITH WASHER	2	2	



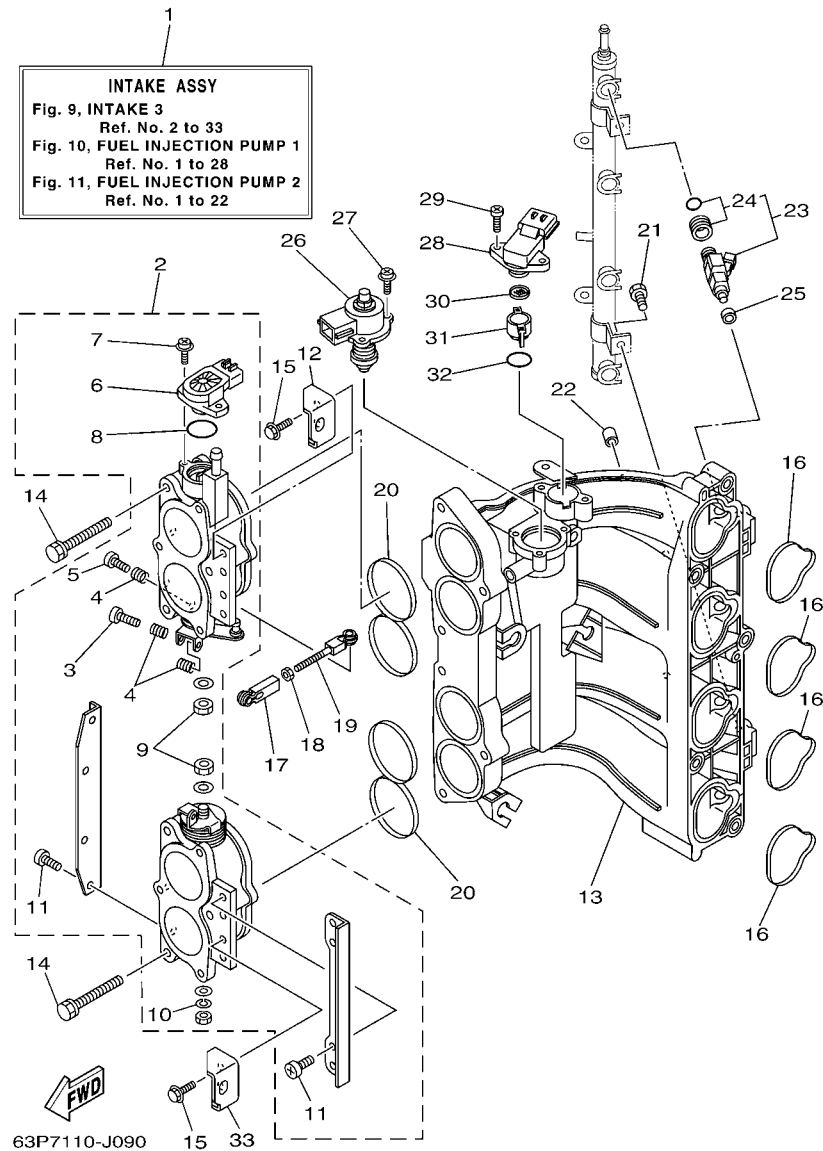
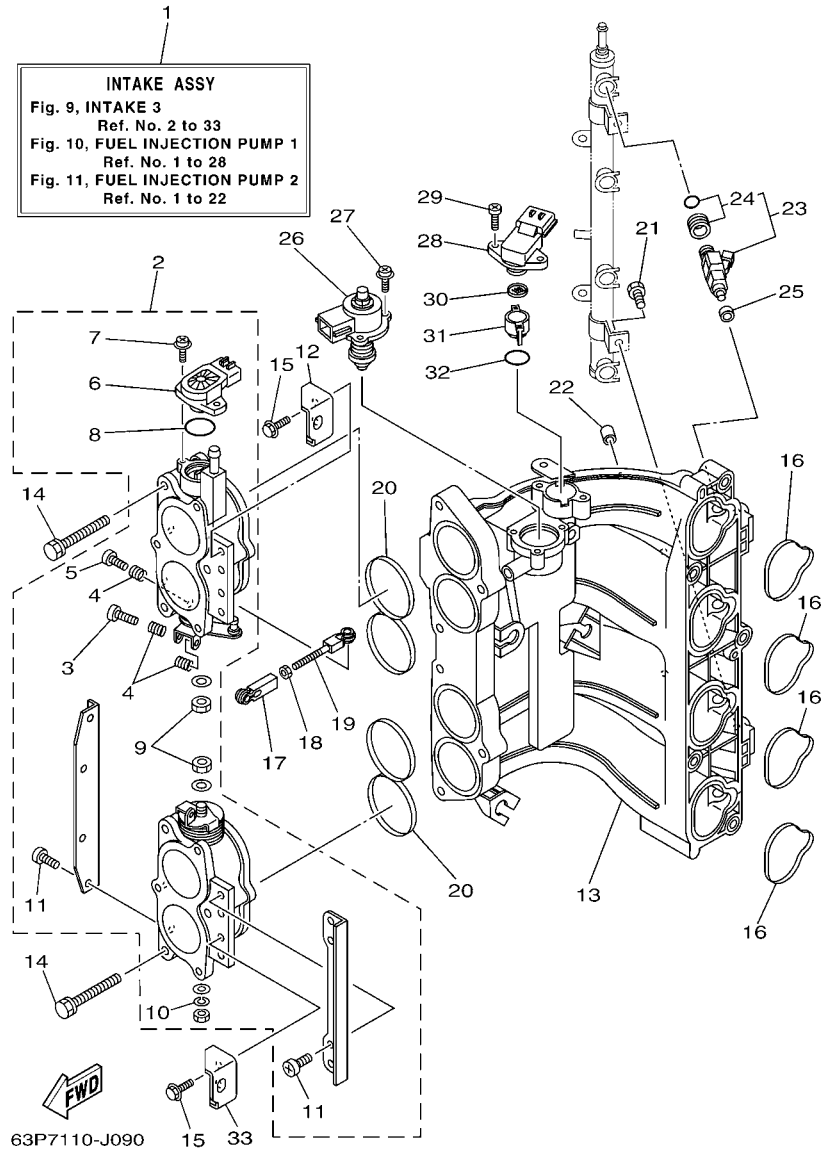


FIG. 9 INTAKE 3

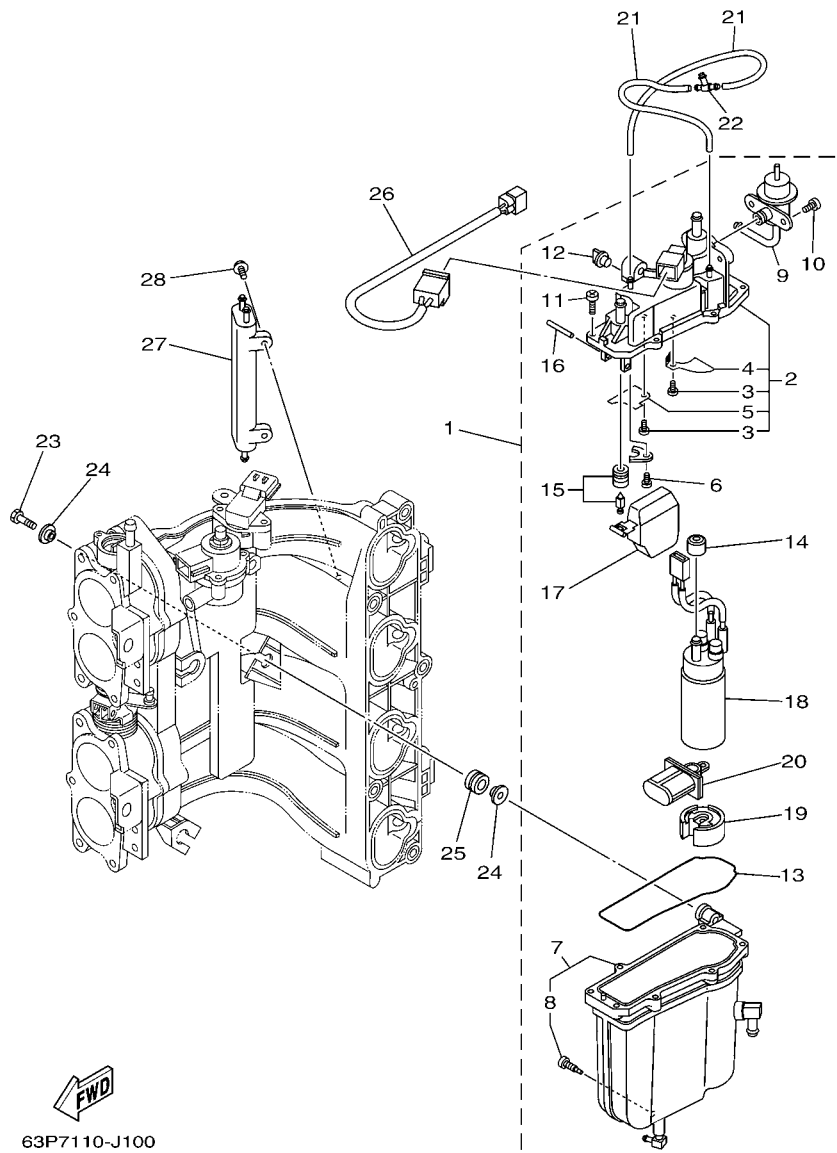
REF. NO.	PART NO.	DESCRIPTION	TLR	TXR	REMARKS
1	63P-14200-21	INTAKE ASSY	1	1	
2	63P-13751-01	BODY, THROTTLE 1	1	1	
3	69J-14321-00	.SCREW, THROTTLE	1	1	
4	68V-14331-00	.SPRING, THROTTLE VALVE	3	3	
5	68V-14323-00	.SCREW, AIR ADJUSTING	1	1	
6	6S1-85885-00	.THROTTLE SENSOR ASSY	1	1	
7	68V-81145-01	.SCREW 1	2	2	
8	68V-8182L-00	.O-RING 1	1	1	
9	3CF-14594-00	.NUT	2	2	
10	68V-14356-00	.WASHER, SPRING	1	1	
11	68V-14565-00	.SCREW	8	8	
12	63P-14291-00	BRACKET 1	1	1	
13	63P-13641-00	MANIFOLD 1	1	1	
14	63P-14496-00	BOLT	6	6	
15	97595-06516	BOLT, WITH WASHER	4	4	
16	63P-13645-00	GASKET, MANIFOLD 1	4	4	
17	6H4-41237-00	JOINT, LINK	1	1	
18	95380-05700	NUT	1	1	
19	682-41238-01	JOINT, LINK	1	1	
20	63P-13557-00	GASKET	2	2	
21	63P-14446-00	BOLT	2	2	
22	63P-13643-00	COVER, MANIFOLD	4	4	
23	63P-13761-00	INJECTOR	4	4	
24	68V-1410B-00	.PACKING KIT	1	1	
25	68V-13766-00	RUBBER, INJECTOR	4	4	
26	63P-1312A-01	VALVE, CONTROL	1	1	
27	68V-81146-01	SCREW 2	3	3	



**FIG. 9 INTAKE 3**

REF. NO.	PART NO.	DESCRIPTION	TLR	TXR	REMARKS
28	63P-82380-00	SENSOR, PRESSURE	1	1	
29	68V-81147-00	SCREW 3	2	2	
30	63P-13905-00	FILTER COMP.	1	1	
31	63P-13898-00	HOLDER	1	1	
32	63P-13769-00	O-RING	1	1	
33	63P-14292-00	BRACKET 2	1	1	
<hr/>					
<hr/>					
<hr/>					
<hr/>					
<hr/>					
<hr/>					
<hr/>					
<hr/>					

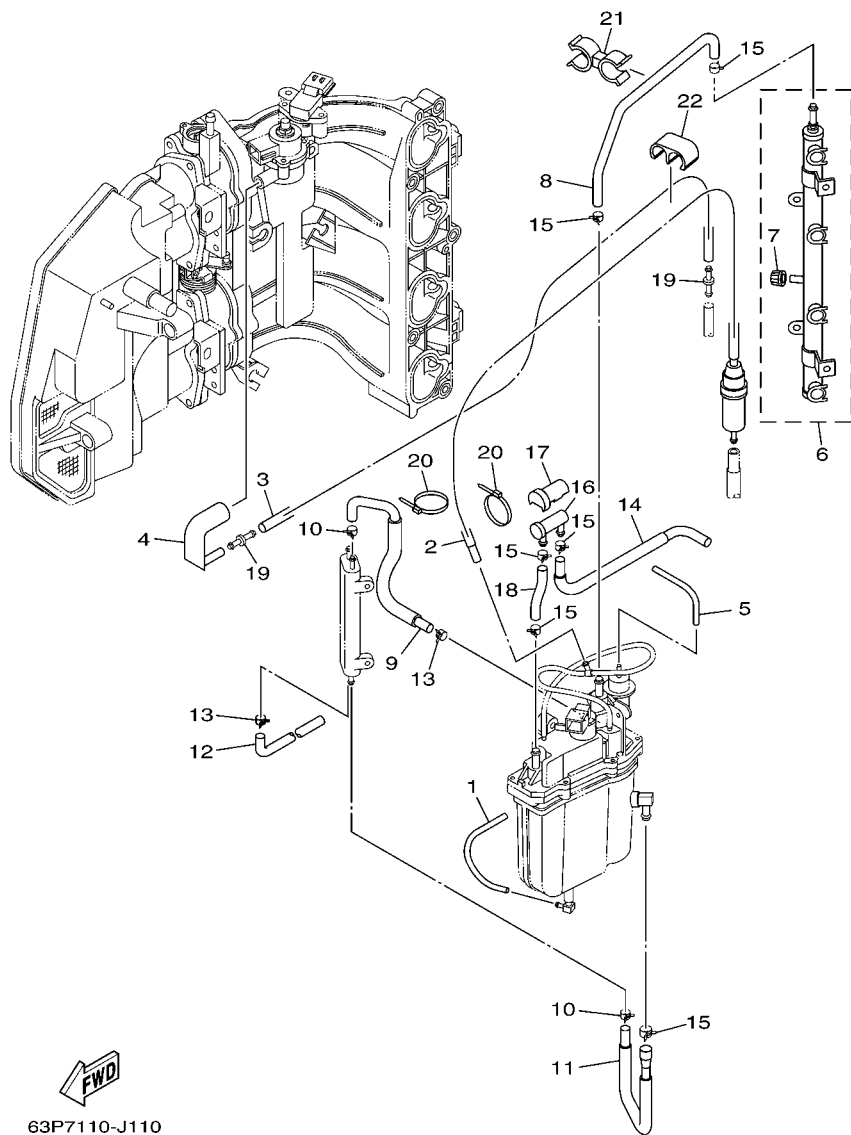
**FIG. 10 FUEL INJECTION PUMP 1**



63P7110-J100

REF. NO.	PART NO.	DESCRIPTION	TLR	TXR		REMARKS
1	63P-14180-01	FLOAT CHAMBER ASSY	1	1		
2	63P-14182-00	.COVER, FLOAT CHAMBER	1	1		
3	4SV-24453-00	..SCREW	2	2		
4	63P-2411R-00	..PLATE 1	1	1		
5	63P-2411T-00	..PLATE 2	1	1		
6	4SV-24453-00	.SCREW	1	1		
7	63P-14181-00	.BODY, FLOAT CHAMBER 1	1	1		
8	63P-14191-00	..PLUG, DRAIN	1	1		
9	63P-13906-00	.REGULATOR, PRESSURE	1	1		
10	63P-14565-00	.SCREW	2	2		
11	63P-14567-00	.SCREW	7	7		
12	69J-14225-01	.CAP	1	1		
13	63P-14984-00	.GASKET, FLOAT CHAMBER	1	1		
14	68V-13781-10	.DAMPER, PUMP	1	1		
15	63P-14546-00	.VALVE, NEEDLE	1	1		
16	68V-14386-00	.PIN, FLOAT	1	1		
17	63P-14985-00	.FLOAT	1	1		
18	63P-13907-02	.FUEL PUMP COMP.	1	1		
19	63P-13784-00	.COVER, PUMP	1	1		
20	63P-13915-00	.FILTER	1	1		
21	63P-14148-00	PIPE	2	2		
22	69J-24379-00	PIPE, JOINT 4	1	1		
23	63P-14777-00	BOLT	3	3		
24	69J-13716-00	COLLAR	6	6		
25	6BM-13593-00	DAMPER	3	3		
26	63P-8259L-00	WIRE HARNESS ASSY 1	1	1		
27	69J-21841-02	COOLER	1	1		





63P7110-J110

FIG. 11 FUEL INJECTION PUMP 2

REF. NO.	PART NO.	DESCRIPTION	TLR	TXR	REMARKS
1	63P-14149-00	PIPE	1	1	
2	63P-13971-00	PIPE, FUEL 1	1	1	
3	63P-13546-00	HOSE 2	1	1	
4	63P-13545-00	HOSE 1	1	1	
5	63P-13532-10	HOSE, VACUUM SENSING 3	1	1	
6	63P-13160-00	DELIVERY PIPE ASSY 1	1	1	
7	63P-14225-00	.CAP	1	1	
8	63P-13974-20	PIPE, FUEL 4	1	1	
9	63P-13976-00	PIPE, FUEL 6	1	1	
10	68V-2411M-00	CLIP	2	2	
11	63P-24317-00	PIPE 7	1	1	
12	63P-2247B-00	HOSE 2	1	1	
13	68V-24519-00	CLIP	2	2	
14	63P-24325-00	PIPE 14	1	1	
15	68V-13577-00	CLIP	6	6	
16	69J-24501-10	FILTER, FUEL	1	1	
17	69J-24599-10	CAP	1	1	
18	63P-13975-00	PIPE, FUEL 5	1	1	
19	6P2-13758-00	PIPE, JOINT	2	2	
20	68V-2481H-00	CLAMP	2	2	
21	63P-2417H-00	CLAMP 1	1	1	
22	63P-2417J-00	CLAMP 2	1	1	

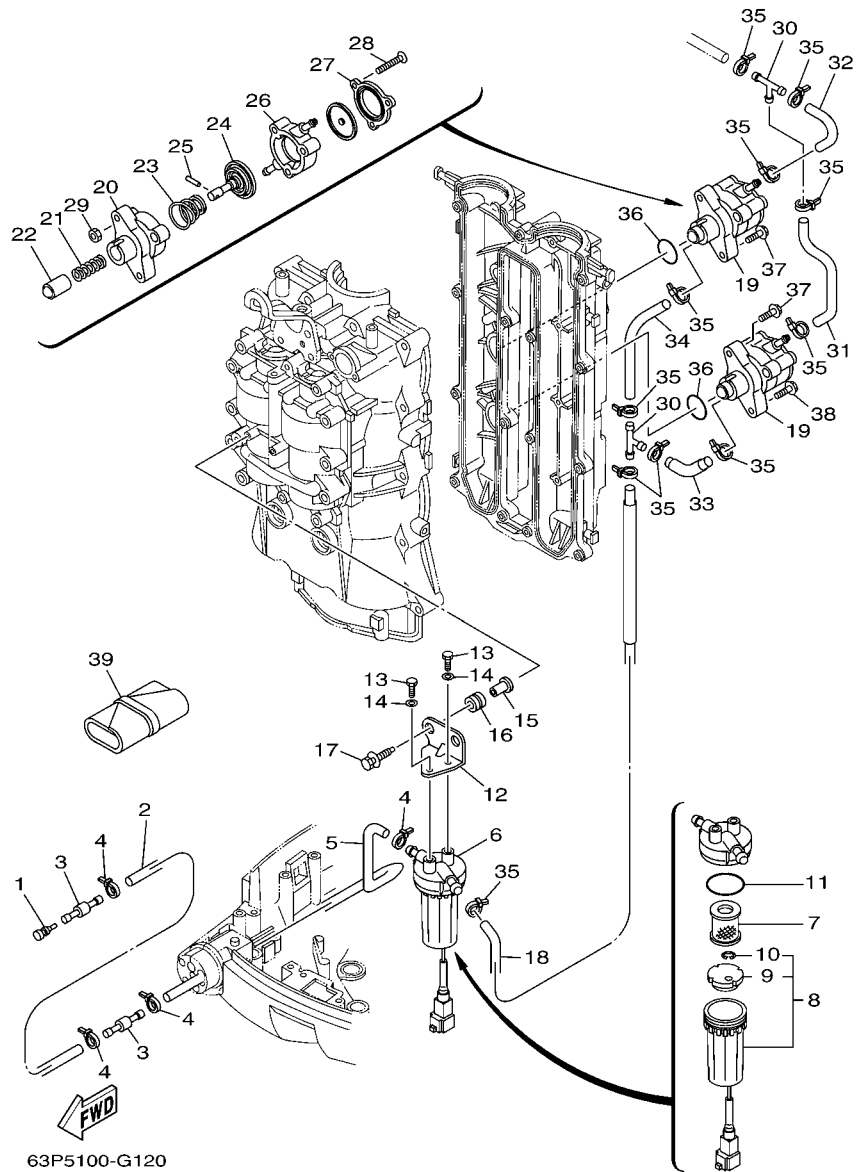


FIG. 12 FUEL 1

REF. NO.	PART NO.	DESCRIPTION	TLR	TXR	REMARKS
1	689-85547-00	DAMPER	1	1	
2	90445-13511	HOSE (L2000)	1	1	
3	6R3-24377-10	PIPE, JOINT 2	2	2	
4	90465-11M10	CLAMP	4	4	
5	63P-24316-00	PIPE 6	1	1	
6	6P3-24560-01	FILTER ASSY	1	1	
7	6P3-24563-00	.ELEMENT, FILTER	1	1	
8	6P3-24562-01	.CUP, FILTER	1	1	
9	6P3-24469-00	..FLOAT, WATER LEVEL	1	1	
10	6P3-24519-00	..CLIP	1	1	
11	6P3-24564-00	.GASKET	1	1	
12	63P-24566-00	BRACKET, FILTER	1	1	
13	97095-06014	BOLT	2	2	
14	92995-06600	WASHER	2	2	
15	90387-06M60	COLLAR	2	2	
16	90480-10M23	GROMMET	2	2	
17	90119-06071	BOLT, WITH WASHER	2	2	
18	63P-24311-10	PIPE, FUEL 1	1	1	
19	63P-24410-00	FUEL PUMP ASSY	2	2	
20	68V-24412-00	.BODY 1	1	1	
21	68V-24454-00	.SPRING	1	1	
22	63P-13131-00	.PLUNGER	1	1	
23	63P-24423-00	.SPRING, DIAPHRAGM	1	1	
24	68V-24411-00	.DIAPHRAGM	1	1	
25	68V-24374-00	.PIN	1	1	
26	68V-24413-00	.BODY 2	1	1	
27	63P-24414-00	.BODY 3	1	1	

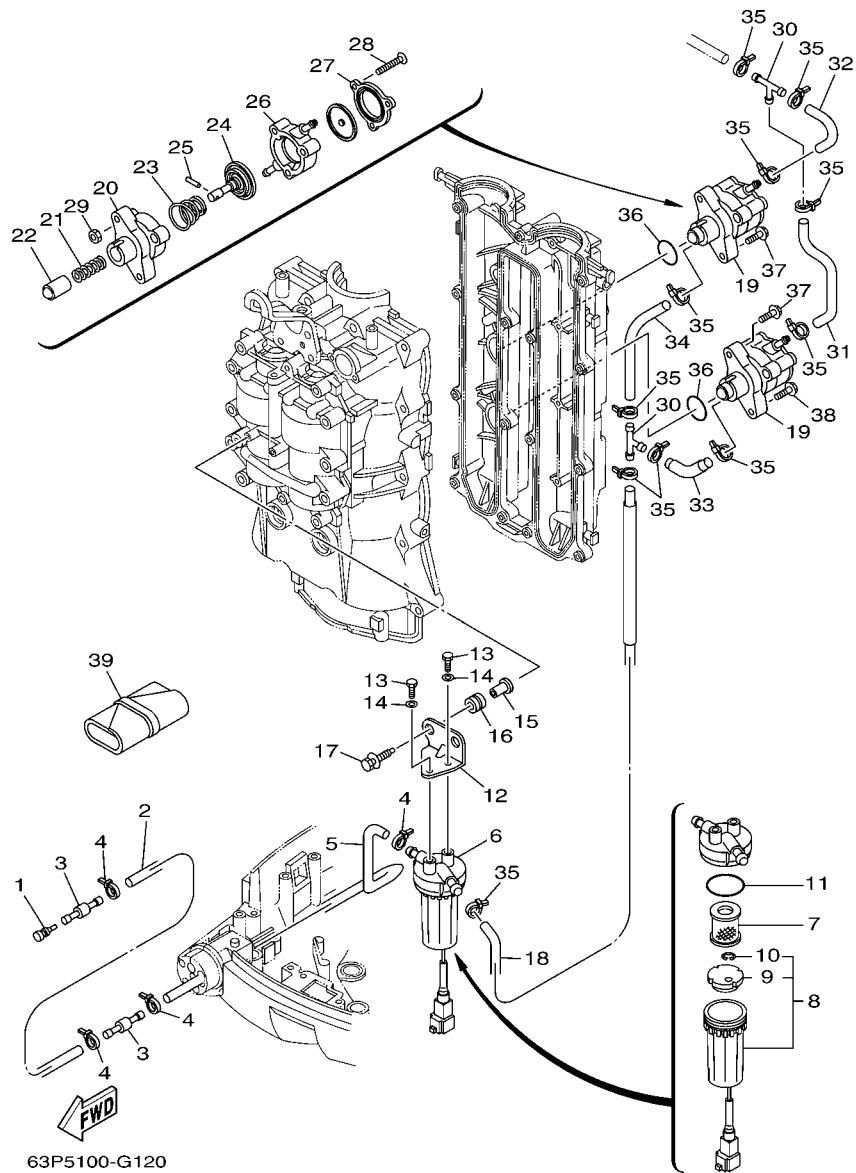
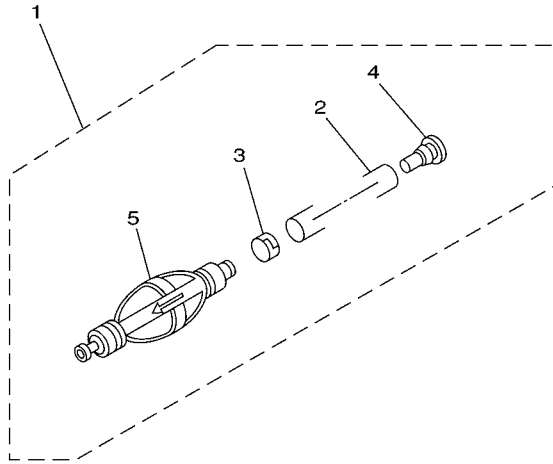


FIG. 12 FUEL 1

REF. NO.	PART NO.	DESCRIPTION	TLR	TXR	REMARKS
28	68V-24444-00	.SCREW	3	3	
29	68V-24149-00	.NUT	3	3	
30	6E5-24378-00	PIPE, JOINT 3	2	2	
31	63P-24314-00	PIPE 4	1	1	
32	63P-24315-00	PIPE 5	1	1	
33	63P-24312-10	PIPE 2	1	1	
34	63P-24313-10	PIPE 3	1	1	
35	90465-11M10	CLAMP	11	11	
36	93210-30682	O-RING	2	2	
37	90119-06M83	BOLT, WITH WASHER	3	3	
38	90119-06135	BOLT, WITH WASHER	1	1	
39	67F-28100-01	TOOL KIT	1	1	AP

FIG. 13 FUEL 2



REF. NO.	PART NO.	DESCRIPTION	TLR	TXR		REMARKS
1	6Y2-24307-50	FUEL PIPE COMP. 2	1	1		AP
2	90445-13M01	.HOSE (L2050)	1	1		
3	6E5-24351-51	.BAND 1	1	1		
4	90480-06M19	.GROMMET	1	1		
5	6Y2-24360-60	.PRIMER PUMP ASSY	1	1		
<hr/>						
<hr/>						
<hr/>						
<hr/>						
<hr/>						
<hr/>						
<hr/>						
<hr/>						
<hr/>						
<hr/>						
<hr/>						
<hr/>						



68V0100-0110



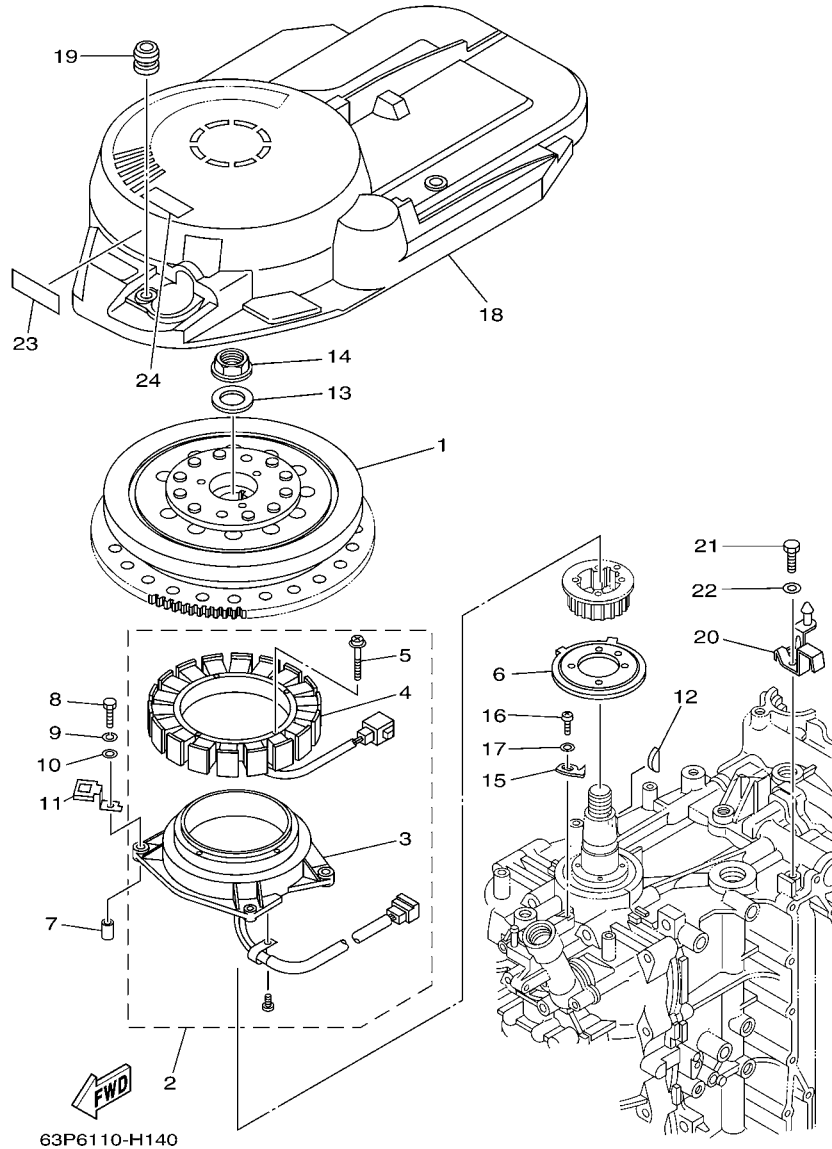
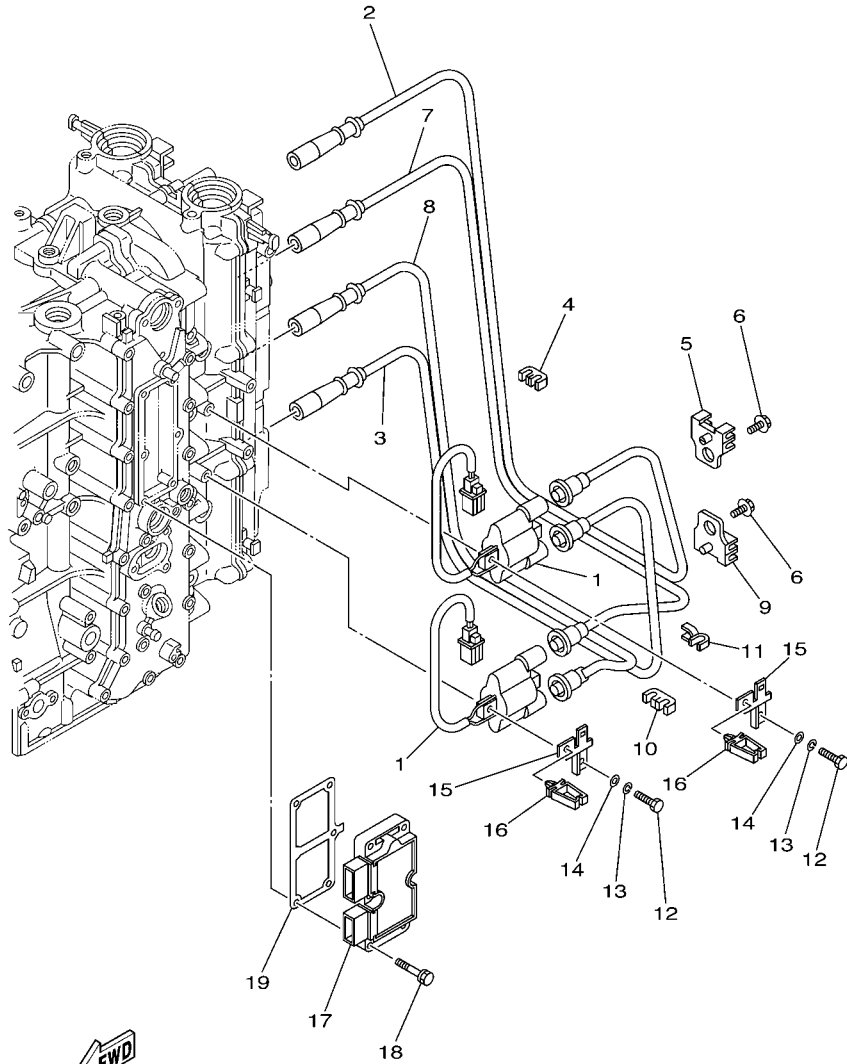


FIG. 14 GENERATOR

REF. NO.	PART NO.	DESCRIPTION	TLR	TXR	REMARKS
1	63P-81450-00	ROTOR ASSY	1	1	
2	63P-81460-00	BASE ASSY	1	1	
3	63P-85580-00	.COIL, PULSER	1	1	
4	63P-81410-00	.STATOR ASSY	1	1	
5	63D-81345-20	.SCREW, WITH WASHER (M6X30)	4	4	
6	63P-81673-01	ROTOR	1	1	
7	99530-08012	PIN, DOWEL	2	2	
8	97095-06035	BOLT	4	4	
9	92995-06100	WASHER, SPRING	4	4	
10	92995-06600	WASHER	4	4	
11	63P-81845-00	PLATE	2	2	
12	90280-05015	KEY, WOODRUFF	1	1	
13	90201-24014	WASHER, PLATE	1	1	
14	90179-24002	NUT	1	1	
15	6P2-81332-00	PLATE, TIMING	1	1	
16	97885-06010	SCREW, PAN HEAD	1	1	
17	92995-06600	WASHER	1	1	
18	63P-81337-00	COVER, FLYWHEEL	1	1	
19	663-82317-01	DAMPER, IGNITION COIL	3	3	
20	63P-8132G-00	PLATE	1	1	
21	97095-06016	BOLT	1	1	
22	92995-06600	WASHER	1	1	
23	63P-13437-41	MARK, CAUTION	1	1	
24	6AH-81994-40	LABEL, SAFETY	1	1	



63P2100-D140

FIG. 15 ELECTRICAL 1

REF. NO.	PART NO.	DESCRIPTION	TLR	TXR	REMARKS
1	63P-82310-01	IGNITION COIL ASSY	2	2	
2	63P-82341-00	CORD, HIGH TENSION 1	1	1	
3	63P-82342-00	CORD, HIGH TENSION 2	1	1	
4	67F-82361-00	CLAMP, CORD	1	1	
5	67F-82362-00	CLAMP, CORD 2	1	1	
6	90119-06134	BOLT, WITH WASHER	2	2	
7	63P-82343-00	CORD, HIGH TENSION 3	1	1	
8	63P-82344-00	CORD, HIGH TENSION 4	1	1	
9	67F-82362-00	CLAMP, CORD 2	1	1	
10	67F-82361-00	CLAMP, CORD	1	1	
11	90464-07M41	CLAMP	1	1	
12	97095-06025	BOLT	4	4	
13	92995-06100	WASHER, SPRING	4	4	
14	92995-06600	WASHER	4	4	
15	63P-82388-00	PLATE	2	2	
16	90464-05141	CLAMP	2	2	
17	63P-81960-01	RECTIFIER & REGULATOR ASSY	1	1	
18	90119-06MA4	BOLT, WITH WASHER	6	6	
19	63P-81975-00	PLATE, RECTIFIER FITTING	1	1	

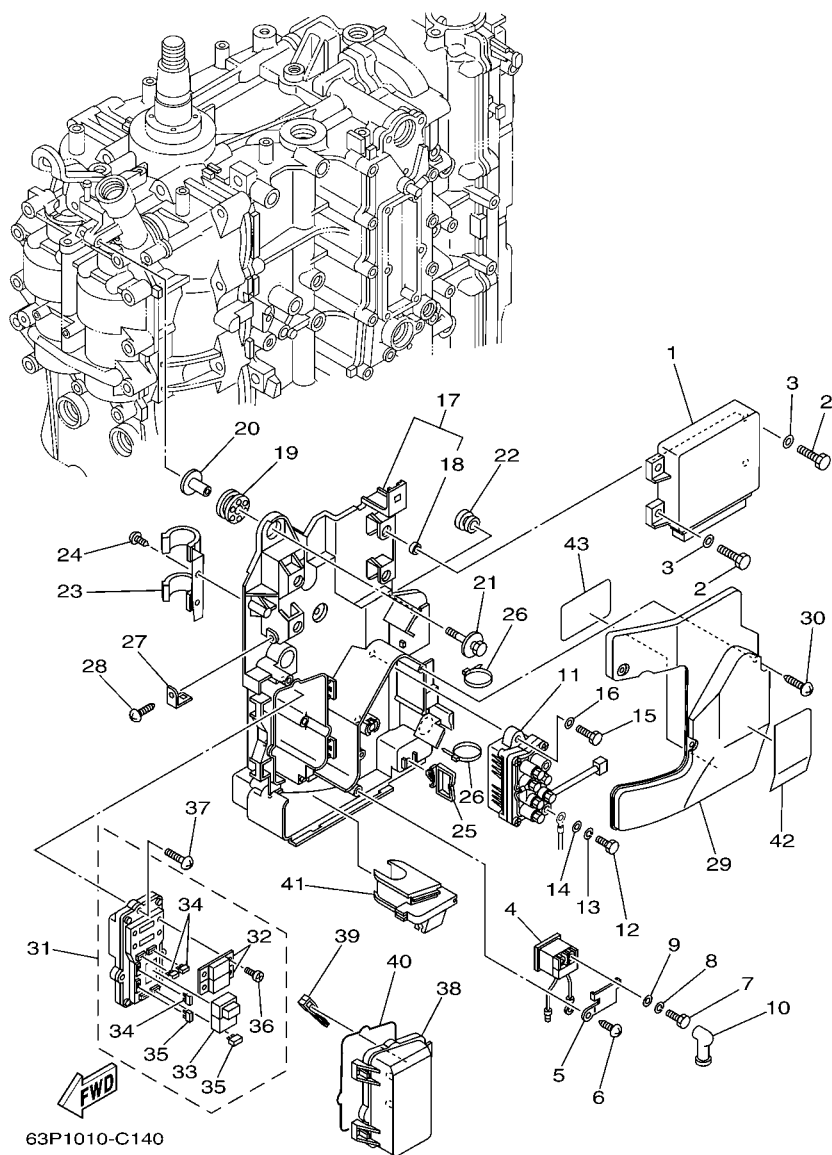


FIG. 16 ELECTRICAL 2

REF. NO.	PART NO.	DESCRIPTION	TLR	TXR	REMARKS
1	63P-8591A-34	ENGINE CONTROL UNIT ASSY	1	1	
2	97095-06016	BOLT	4	4	
3	92995-06600	WASHER	4	4	
4	68V-8194A-00	RELAY	1	1	
5	68V-81953-00	STAY, RELAY	1	1	
6	97780-60620	SCREW, TAPPING	1	1	
7	97095-06010	BOLT	2	2	
8	92995-06100	WASHER, SPRING	2	2	
9	92995-06600	WASHER	2	2	
10	6G5-82119-00	COVER, LEAD WIRE	2	2	
11	63P-81950-00	RELAY ASSY	1	1	
12	97095-06010	BOLT	2	2	
13	92995-06100	WASHER, SPRING	2	2	
14	92995-06600	WASHER	2	2	
15	97013-06020	BOLT	2	2	
16	92903-06600	WASHER, PLATE	2	2	
17	63P-81948-00	BRACKET	1	1	
18	90387-06010	.COLLAR	4	4	
19	68F-85516-01	SPACER	3	3	
20	90387-06176	COLLAR	3	3	
21	68F-85119-00	BOLT	3	3	
22	90480-10627	GROMMET	1	1	
23	63P-82594-00	CLAMP	1	1	
24	97780-60620	SCREW, TAPPING	1	1	
25	90464-23199	CLAMP	1	1	
26	90465-13M18	CLAMP	3	3	
27	68V-85548-00	HOLDER	1	1	

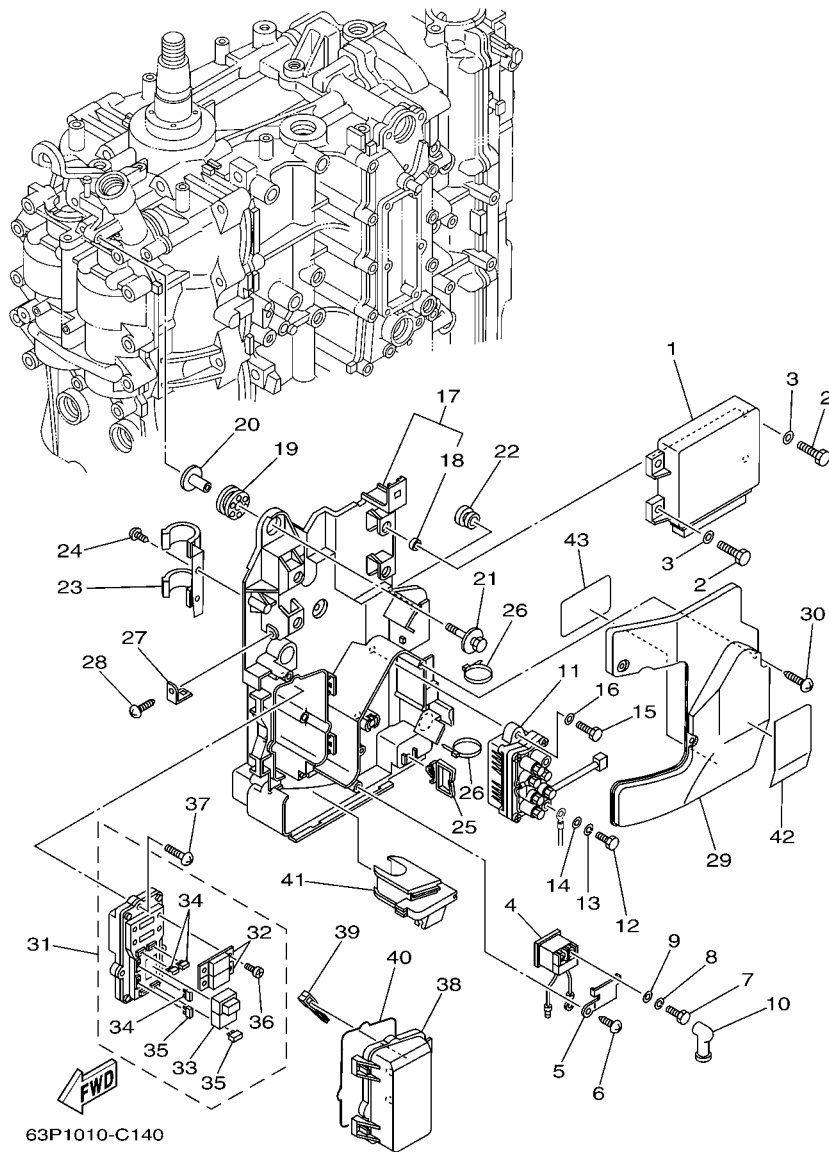
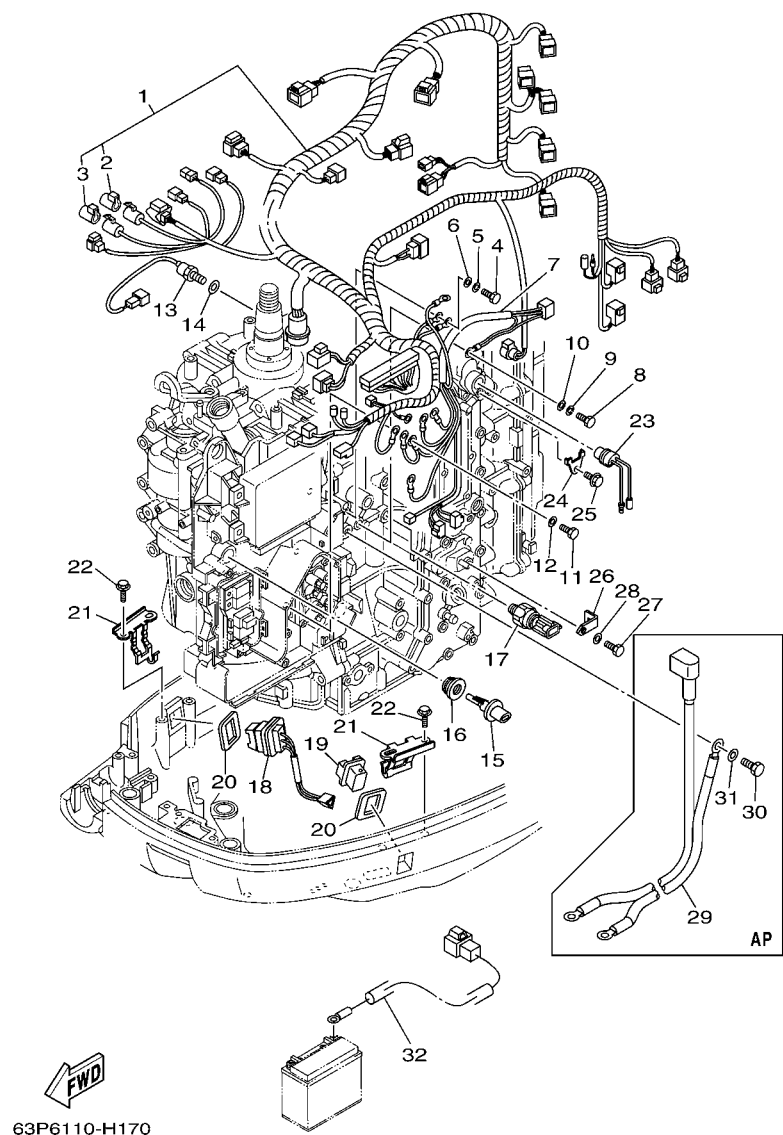


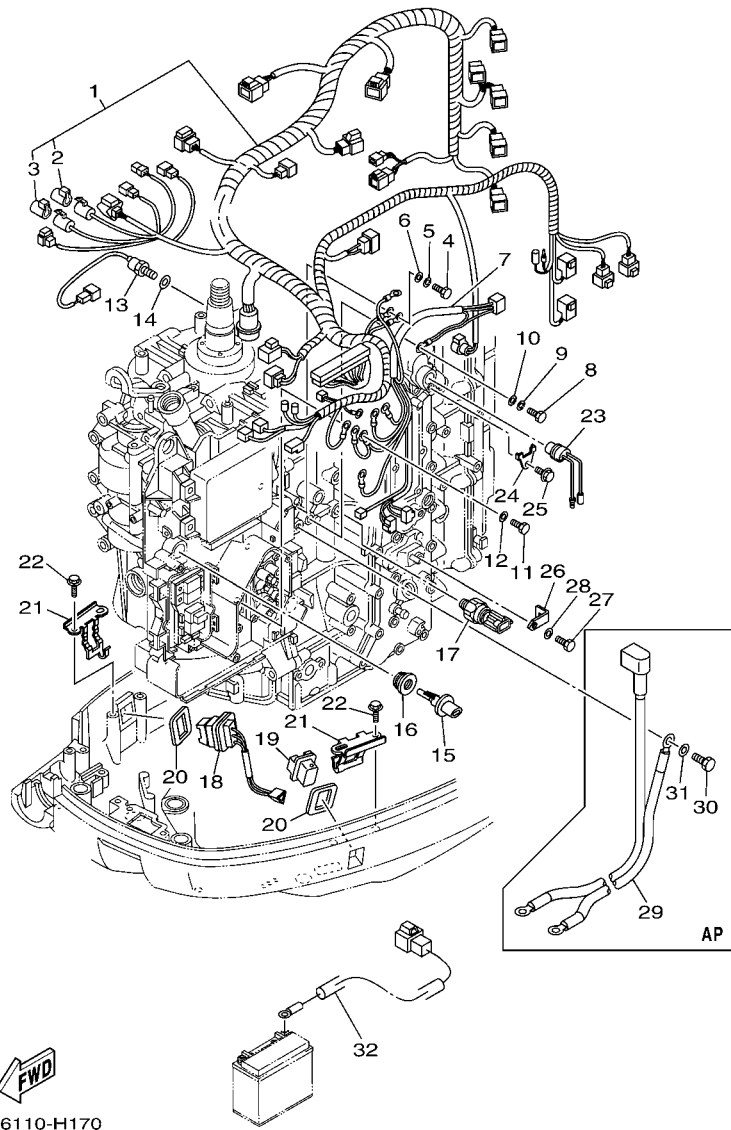
FIG. 16 ELECTRICAL 2

REF. NO.	PART NO.	DESCRIPTION	TLR	TXR	REMARKS
28	97780-60620	SCREW, TAPPING	1	1	
29	63P-81942-00	COVER	1	1	
30	90169-05M00	SCREW, TRUSS HEAD TAPPING	3	3	
31	63P-82170-00	FUSE BOX ASSY	1	1	
32	63P-82151-00	.FUSE (50A)	2	2	
33	68F-8195A-00	.RELAY ASSY	1	1	
34	67F-82151-00	.FUSE (20A)	3	3	
35	67F-82151-10	.FUSE (30A)	2	2	
36	68F-82846-00	.SCREW, PAN HEAD (M5)	4	4	
37	97780-50620	SCREW, TAPPING	3	3	
38	60V-85544-00	CASE	1	1	
39	67F-2812A-00	PULLER, FUSE	1	1	
40	60V-82157-00	DAMPER	1	1	
41	63P-81336-00	GROMMET	1	1	
42	63P-81919-00	GRAPHIC, REGULATOR	1	1	
43	63P-81919-10	GRAPHIC, REGULATOR	1	1	

FIG. 17 ELECTRICAL 3



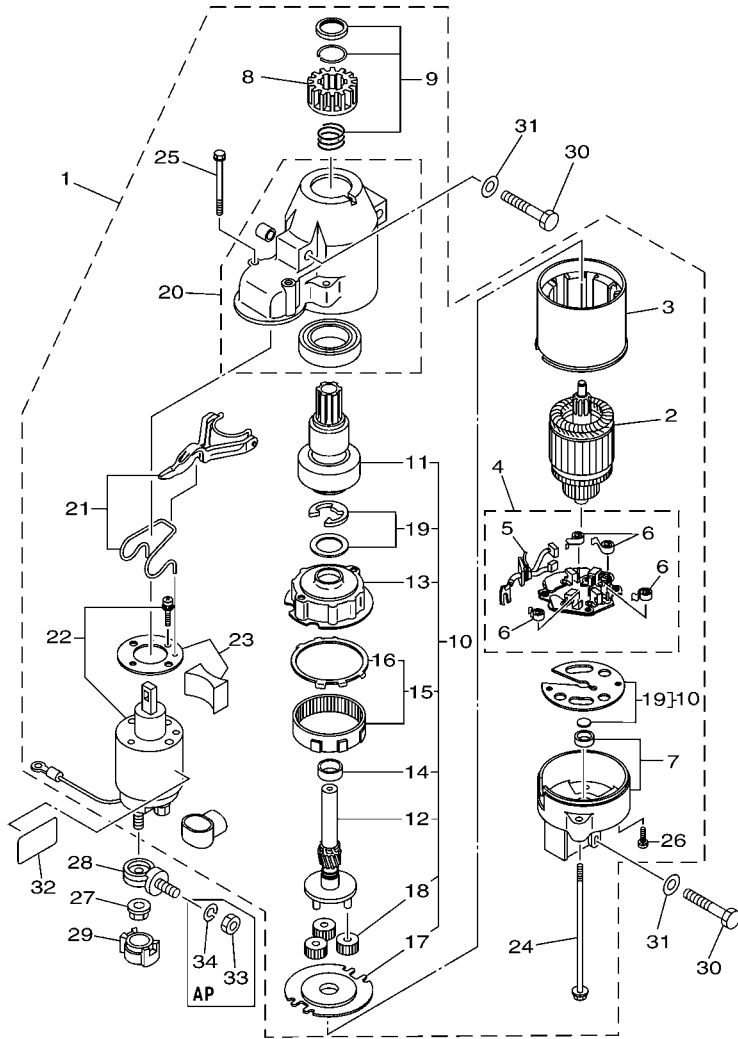
REF. NO.	PART NO.	DESCRIPTION	TLR	TXR	REMARKS
1	63P-82590-30	WIRE HARNESS ASSY	1	1	
2	6P2-82582-00	.CAP 1 (FEMALE)	1	1	
3	6P2-82582-10	.CAP 1 (MALE)	1	1	
4	97095-06020	BOLT	1	1	
5	92995-06100	WASHER, SPRING	1	1	
6	92995-06600	WASHER	1	1	
7	63P-8259M-00	WIRE HARNESS ASSY 2	1	1	
8	97095-06020	BOLT	1	1	
9	92995-06100	WASHER, SPRING	1	1	
10	92995-06600	WASHER	1	1	
11	97095-06012	BOLT	1	1	
12	92995-06600	WASHER	1	1	
13	61A-85790-00	THERMOSENSOR ASSY	1	1	
14	92990-10600	WASHER, PLATE	1	1	
15	63P-85886-00	SENSOR, AIR TEMPERATURE	1	1	
16	63P-14435-00	GROMMET	1	1	
17	6AW-83651-00	SENDER, OIL PRESSURE	1	1	
18	69J-82563-00	TRIM & TILT SWITCH ASSY	1	1	
19	69J-42723-00-8D	COVER, BOTTOM	1	1	
20	69J-82587-00	GASKET	2	2	
21	63P-83614-00	BRACKET	2	2	
22	90109-06M86	BOLT	4	4	
23	6P2-82560-01	THERMO SWITCH ASSY	1	1	
24	6E9-82588-00	PLATE	1	1	
25	90109-06M80	BOLT	1	1	
26	63P-8366P-00	BRACKET 4	1	1	
27	97095-06012	BOLT	1	1	



63P6110-H170

**FIG. 17 ELECTRICAL 3**

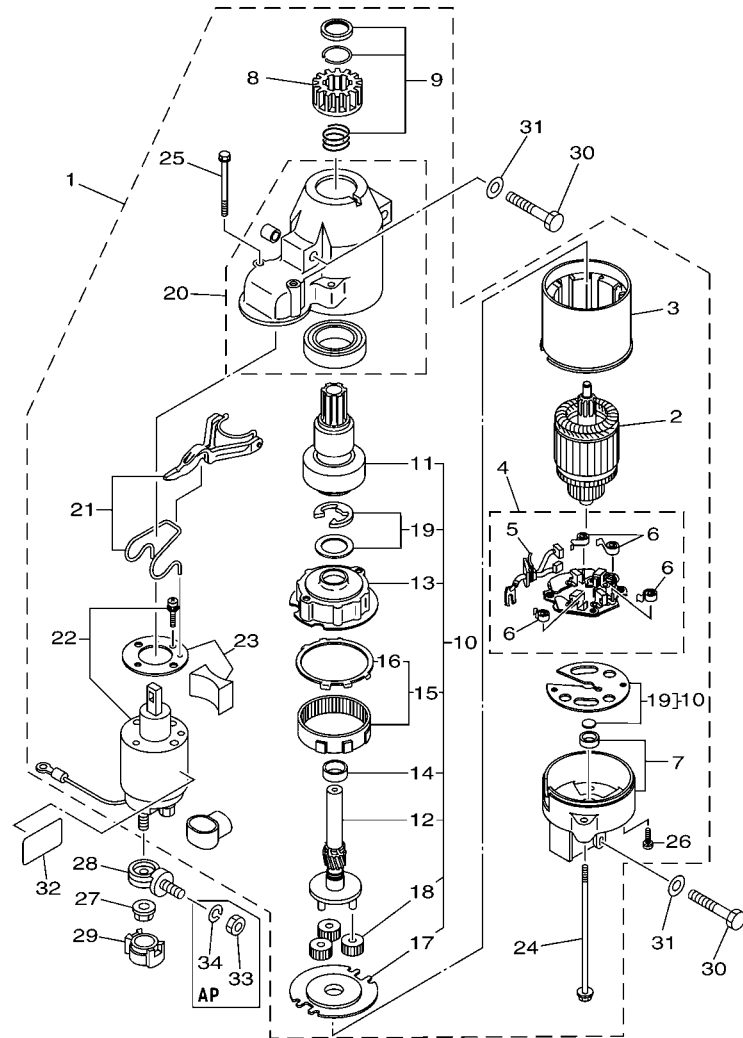
REF. NO.	PART NO.	DESCRIPTION	TLR	TXR	REMARKS
28	92995-06600	WASHER	1	1	
29	63P-82105-00	WIRE HARNESS	1	1	AP
30	97095-08016	BOLT	1	1	AP
31	92995-08600	WASHER	1	1	AP
32	68F-81949-00	WIRE, LEAD (ISOLATOR CABLE)	1	1	AP



**FWD**  
63P5110-G180

**FIG. 18 STARTING MOTOR**

REF. NO.	PART NO.	DESCRIPTION	TLR	TXR	REMARKS
1	6BR-81800-00	STARTING MOTOR ASSY	1	1	
2	67F-81850-00	.ARMATURE ASSY	1	1	
3	67F-81810-00	.STATOR ASSY	1	1	
4	69J-81840-00	.BRUSH HOLDER ASSY	1	1	
5	69J-81801-00	..BRUSH SET	1	1	
6	67F-81813-00	..SPRING, BRUSH	4	4	
7	67F-81820-00	.REAR BRACKET ASSY	1	1	
8	67F-81808-00	.PINION ASSY	1	1	
9	67F-81857-00	.PINION STOPPER SET	1	1	
10	67F-81807-00	.GEAR ASSY, STARTING MOTOR	1	1	
11	67F-81832-00	..CLUTCH, OVER RUN	1	1	
12	67F-81836-00	..SHAFT, PINION	1	1	
13	67F-81821-00	..BRACKET, CENTER 1	1	1	
14	67F-81841-00	..BEARING	1	1	
15	67F-81891-00	..GEAR, RING	1	1	
16	67F-8183R-00	...GASKET	1	1	
17	67F-81830-00	..BRACKET, CENTER 2	1	1	
18	60V-8183T-00	..GEAR, IDLER	3	3	
19	67F-81809-00	..WASHER KIT	1	1	
20	69J-81842-00	.COVER	1	1	
21	69J-81839-00	.LEVER ASSY	1	1	
22	63P-81941-00	.STARTER RELAY ASSY	1	1	
23	69J-81869-00	.COVER, DUST	1	1	
24	6K7-81826-11	.BOLT	2	2	
25	69J-81828-00	.BOLT 2	2	2	
26	67F-81846-00	.SCREW	2	2	
27	90179-08003	NUT	1	1	



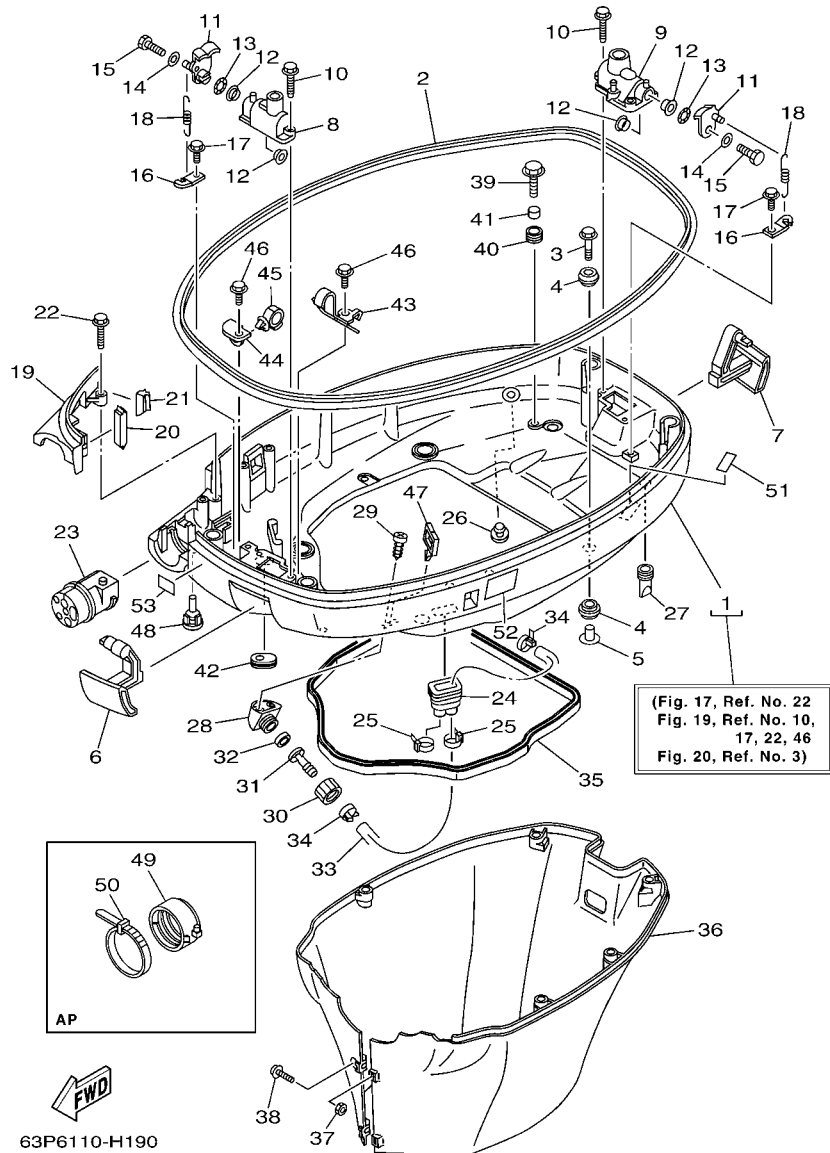
63P5110-G180

FIG. 18 STARTING MOTOR

REF. NO.	PART NO.	DESCRIPTION	TLR	TXR	REMARKS
28	60V-81925-00	TERMINAL	1	1	
29	68F-82582-00	COVER, WIRE HARNESS	1	1	
30	97013-08045	BOLT	3	3	
31	92903-08600	WASHER, PLATE	3	3	
32	67F-83627-01	LABEL, CAUTION 7	1	1	
33	95333-08600	NUT	1	1	AP
34	92903-08100	WASHER, SPRING	1	1	AP

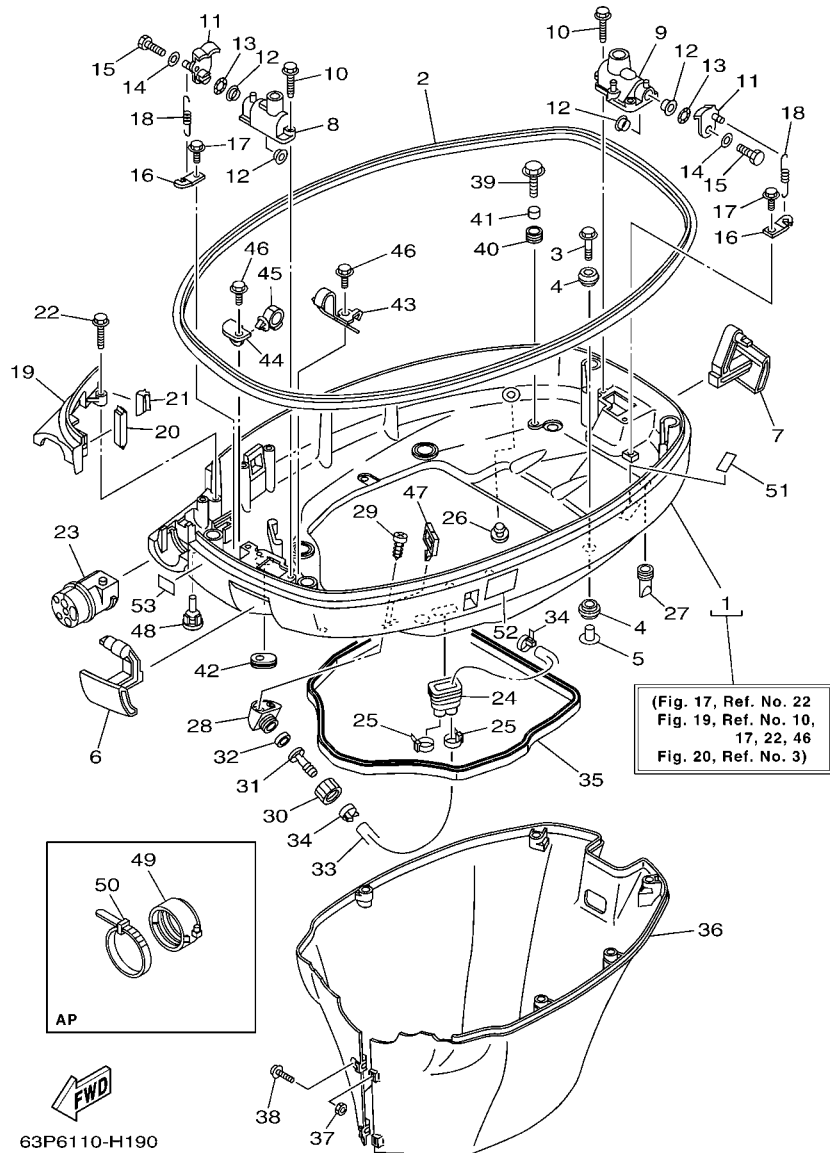


**FIG. 19 BOTTOM COWLING**



REF. NO.	PART NO.	DESCRIPTION	TLR	TXR	REMARKS
1	63P-42710-01-8D	BOTTOM COWLING ASSY	1	1	
2	63P-42615-00	SEAL	1	1	
3	90119-08M22	BOLT, WITH WASHER	4	4	
4	90480-22M81	GROMMET	8	8	
5	90387-08M37	COLLAR	4	4	
6	63P-42815-00-8D	LEVER, CLAMP	1	1	
7	63P-42816-00-8D	LEVER, CLAMP	1	1	
8	68F-42828-03-8D	PLATE, CLAMP	1	1	
9	63P-42828-00-8D	PLATE, CLAMP	1	1	
10	90109-06M82	BOLT	4	4	
11	63P-42818-01	LEVER, CLAMP	2	2	
12	90386-15M73	BUSH	4	4	
13	90206-15M18	WASHER, WAVE	2	2	
14	90201-06068	WASHER, PLATE	2	2	
15	97095-06020	BOLT	2	2	
16	64D-43144-00	HOOK, SPRING	2	2	
17	90109-06M86	BOLT	2	2	
18	90506-16M34	SPRING, TENSION	2	2	
19	63P-42738-00-8D	PLATE, FITTING	1	1	
20	63P-42717-00	RUBBER, SEAL 2	1	1	
21	63P-42718-00	RUBBER, SEAL 3	1	1	
22	90109-06M82	BOLT	2	2	
23	63P-42725-00	GROMMET	1	1	
24	6H1-42726-21	GROMMET	1	1	
25	90465-11M10	CLAMP	2	2	
26	6P2-44391-00	NIPPLE, HOSE	1	1	
27	61A-42717-00	RUBBER, SEAL 2	4	4	

**FIG. 19 BOTTOM COWLING**



REF. NO.	PART NO.	DESCRIPTION	TLR	TXR	REMARKS
28	68T-12572-00	ADAPTER	1	1	
29	97780-60520	SCREW, TAPPING	2	2	
30	6R3-12581-00	JOINT, HOSE 1	1	1	
31	6R3-12582-00	JOINT, HOSE 2	1	1	
32	6R3-12583-00	GASKET, HOSE JOINT	1	1	
33	63P-42541-00	PIPE 1	1	1	
34	90465-11M10	CLAMP	2	2	
35	63P-42716-00	RUBBER, SEAL 1	1	1	
36	63P-42741-01-8D	APRON	1	1	
37	95380-06600	NUT, HEXAGON	2	2	
38	90159-06M28	SCREW, WITH WASHER	2	2	
39	90109-06M80	BOLT	4	4	
40	90480-13M24	GROMMET	4	4	
41	90387-06M43	COLLAR	4	4	
42	61A-42727-00	GROMMET	1	1	
43	63P-42811-01	STAY	1	1	
44	63P-42756-00	STAY, CLAMP	1	1	
45	90464-20181	CLAMP	1	1	
46	90109-06M86	BOLT	2	2	
47	90464-23199	CLAMP	1	1	
48	6H4-42748-00	GROMMET	2	2	
49	68F-42753-00	FASTNER	1	1	AP
50	90464-20258	CLAMP	1	1	AP
51	67F-82377-00	LABEL	1	1	
52	6AH-42794-40	LABEL, WARNING (GENERAL)	1	1	
53	6AH-81996-00	MARK	1	1	

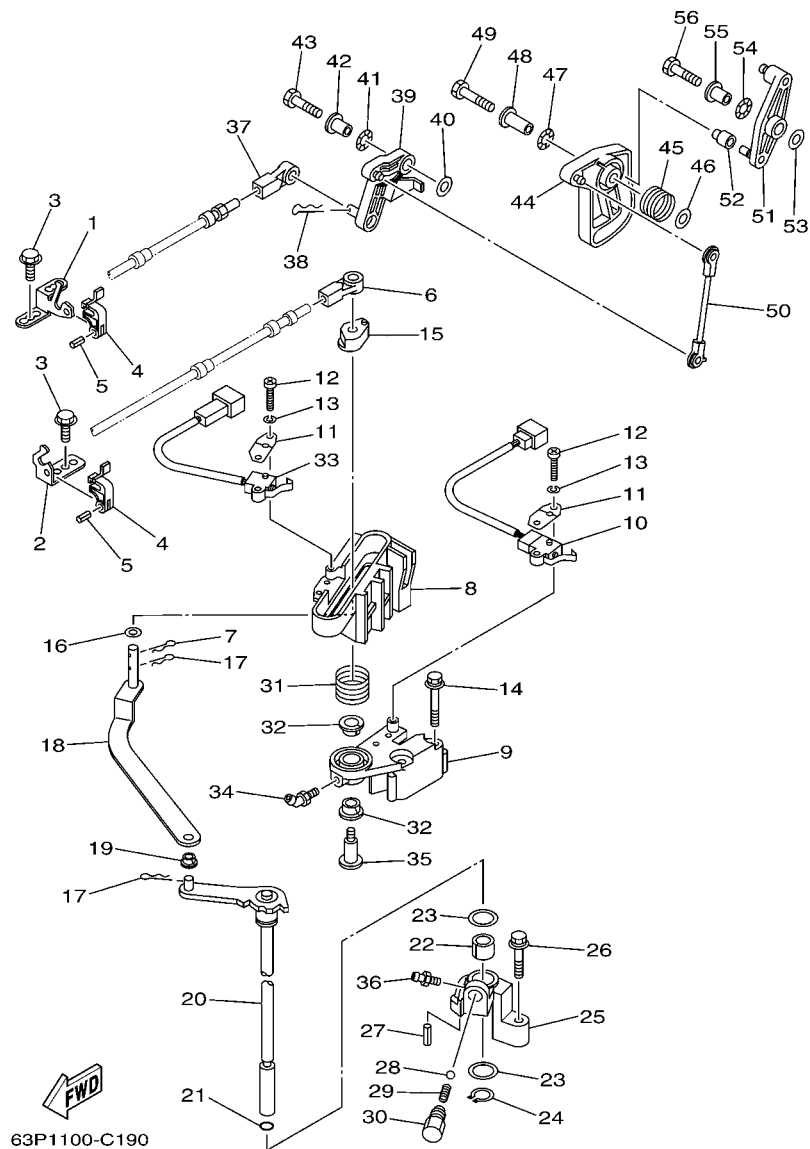


FIG. 20 CONTROL

REF. NO.	PART NO.	DESCRIPTION	TLR	TXR	REMARKS
1	63P-48531-00	BRACKET, REMOTE CONTROL 1	1	1	
2	63P-48532-00	BRACKET, REMOTE CONTROL 2	1	1	
3	90109-06M86	BOLT	3	3	
4	63P-48538-00	CLAMP, CABLE 1	2	2	
5	91690-30010	PIN, SPRING	2	2	
6	6E5-48344-00	CABLE END, REMOTE CONTROL	1	1	
7	90468-18008	CLIP	1	1	
8	63P-44176-00-94	BRACKET	1	1	
9	63P-44117-00-94	BRACKET	1	1	
10	69J-8259F-00	SWITCH ASSY	1	1	
11	61A-82588-01	PLATE	2	2	
12	97885-04016	SCREW, PAN HEAD	4	4	
13	92995-04100	WASHER	4	4	
14	97595-06550	BOLT, WITH WASHER	2	2	
15	63P-44122-00	BUSHING, SHIFT ROD LEVER	1	1	
16	90202-08M20	WASHER, PLATE	1	1	
17	90468-18008	CLIP	2	2	
18	63P-44121-00	LEVER, SHIFT ROD	1	1	
19	90386-06M12	BUSH	1	1	
20	63P-44120-00	HANDLE GEAR SHIFT ASSY	1	1	
21	93210-09165	O-RING	1	1	
22	90386-16M66	BUSH	1	1	
23	90202-16061	WASHER, PLATE	2	2	
24	93410-16006	CIRCLIP	1	1	
25	63P-44118-00-94	BRACKET	1	1	
26	97575-06535	BOLT, WITH WASHER	1	1	
27	91690-30010	PIN, SPRING	1	1	

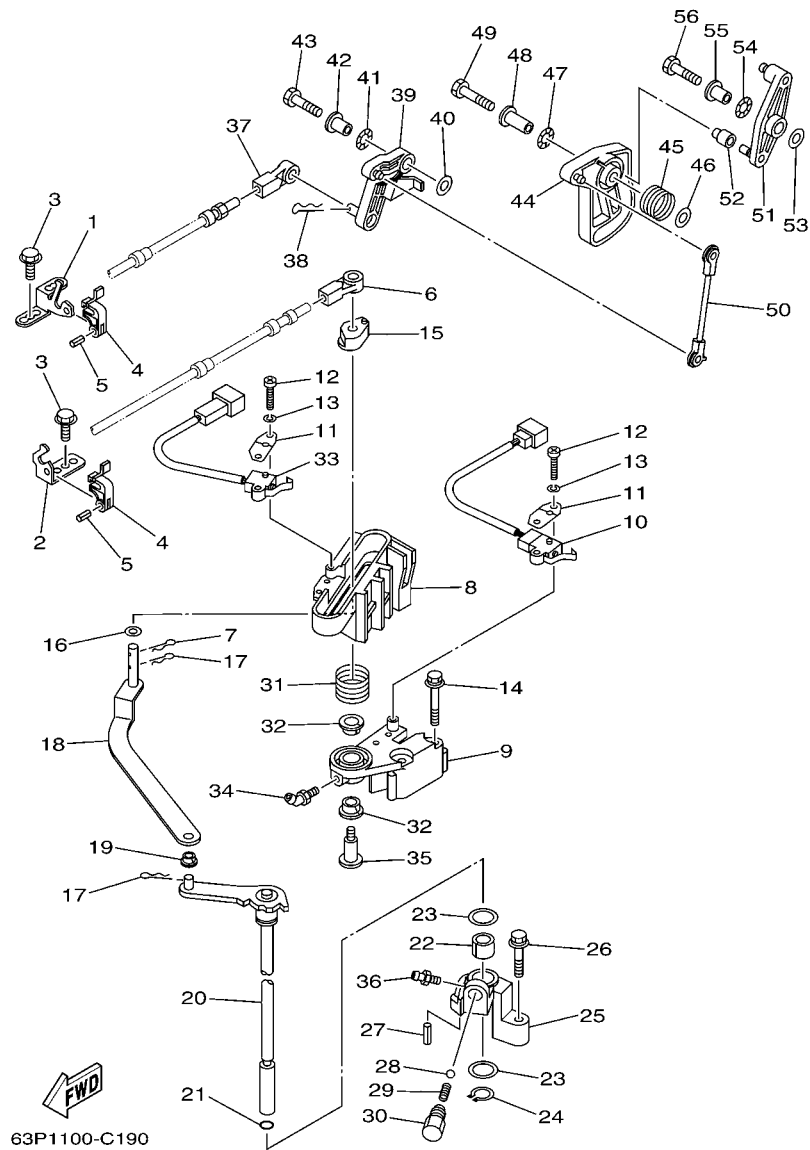
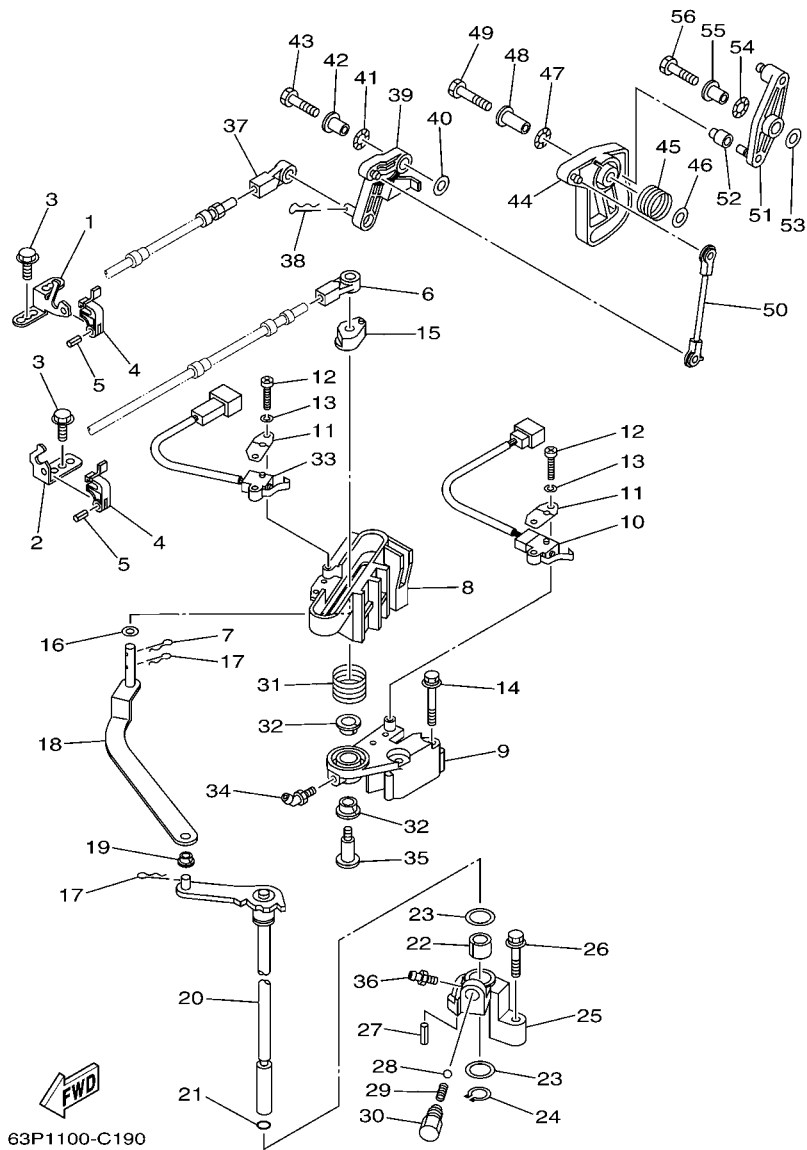


FIG. 20 CONTROL

REF. NO.	PART NO.	DESCRIPTION	TLR	TXR	REMARKS
28	93501-04M02	BALL	1	1	
29	90501-12082	SPRING, COMPRESSION	1	1	
30	648-42715-00	BUSHING	1	1	
31	90508-20M31	SPRING, TORSION	1	1	
32	90386-12069	BUSH	2	2	
33	60V-8259F-00	SWITCH ASSY	1	1	
34	93700-06M01	NIPPLE, GREASE	1	1	
35	90109-08019	BOLT	1	1	
36	93700-06M03	NIPPLE, GREASE	1	1	
37	6E5-48344-00	CABLE END, REMOTE CONTROL	1	1	
38	90468-18008	CLIP	1	1	
39	63P-42154-00	LEVER, THROTTLE CONTROL	1	1	
40	90201-06M31	WASHER, PLATE	1	1	
41	90206-10M04	WASHER, WAVE	1	1	
42	90387-06M29	COLLAR	1	1	
43	97095-06025	BOLT	1	1	
44	63P-41213-00	CAM, ACCEL.	1	1	
45	69J-44135-00	SPRING	1	1	
46	90201-06M31	WASHER, PLATE	1	1	
47	90206-10M04	WASHER, WAVE	1	1	
48	90387-06M82	COLLAR	1	1	
49	97095-06035	BOLT	1	1	
50	63P-41237-00	JOINT, LINK	1	1	
51	63P-42157-00	LEVER, THROTTLE	1	1	
52	68V-42171-00	BUSHING	1	1	
53	90201-06M31	WASHER, PLATE	1	1	
54	90206-10M04	WASHER, WAVE	1	1	



**FIG. 20 CONTROL**

REF. NO.	PART NO.	DESCRIPTION	TLR	TXR	REMARKS
55	90387-06M29	COLLAR	1	1	
56	97095-06025	BOLT	1	1	
<hr style="border-top: 1px dashed black;"/>					
<hr style="border-top: 1px dashed black;"/>					
<hr style="border-top: 1px dashed black;"/>					
<hr style="border-top: 1px dashed black;"/>					
<hr style="border-top: 1px dashed black;"/>					
<hr style="border-top: 1px dashed black;"/>					
<hr style="border-top: 1px dashed black;"/>					
<hr style="border-top: 1px dashed black;"/>					

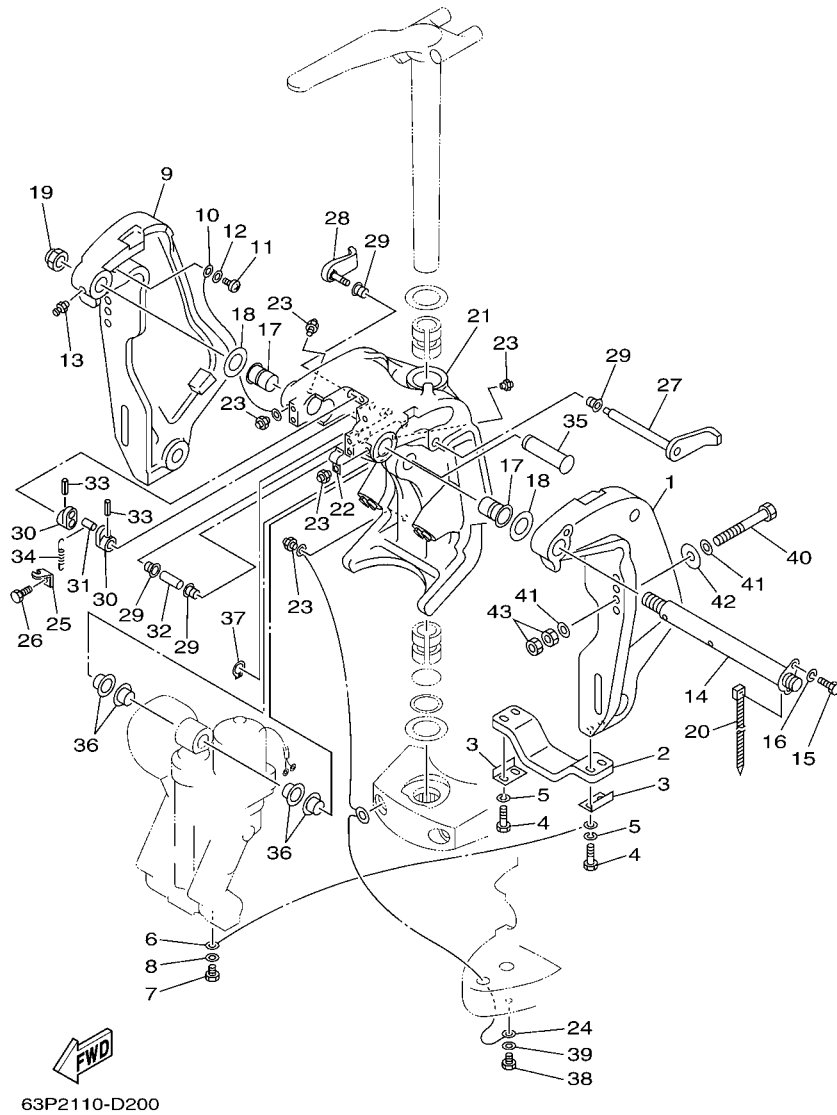
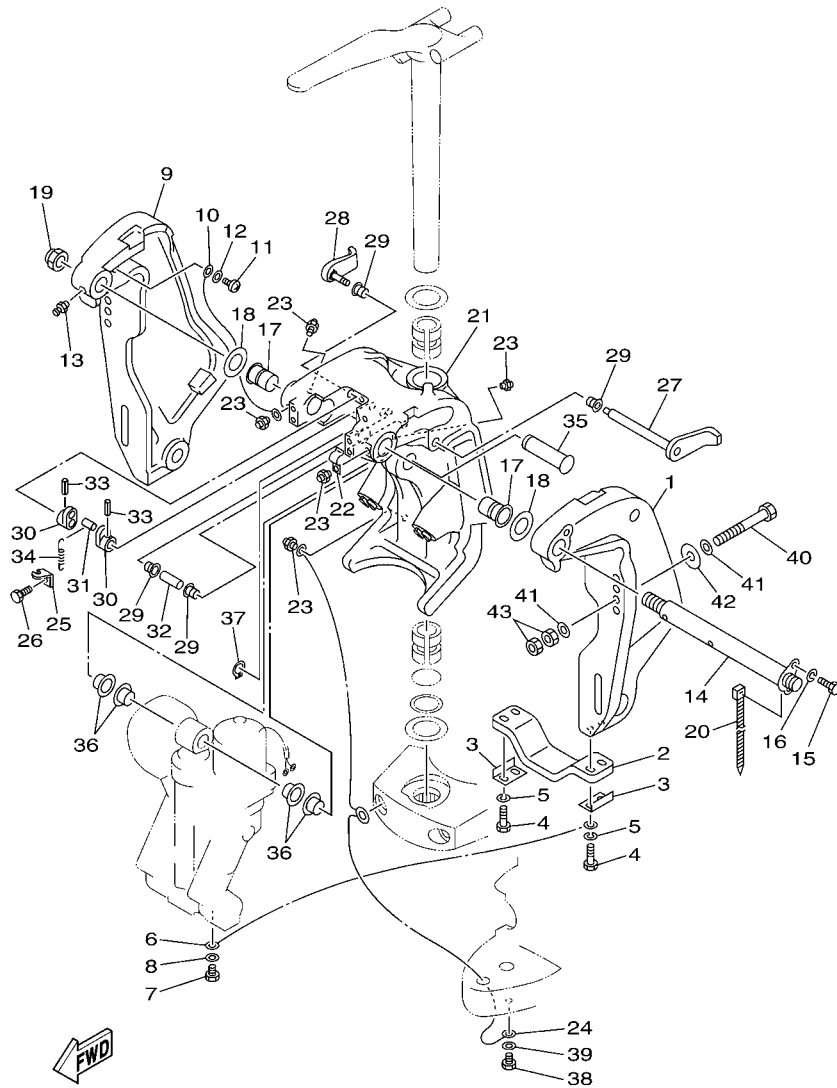


FIG. 21 BRACKET 1

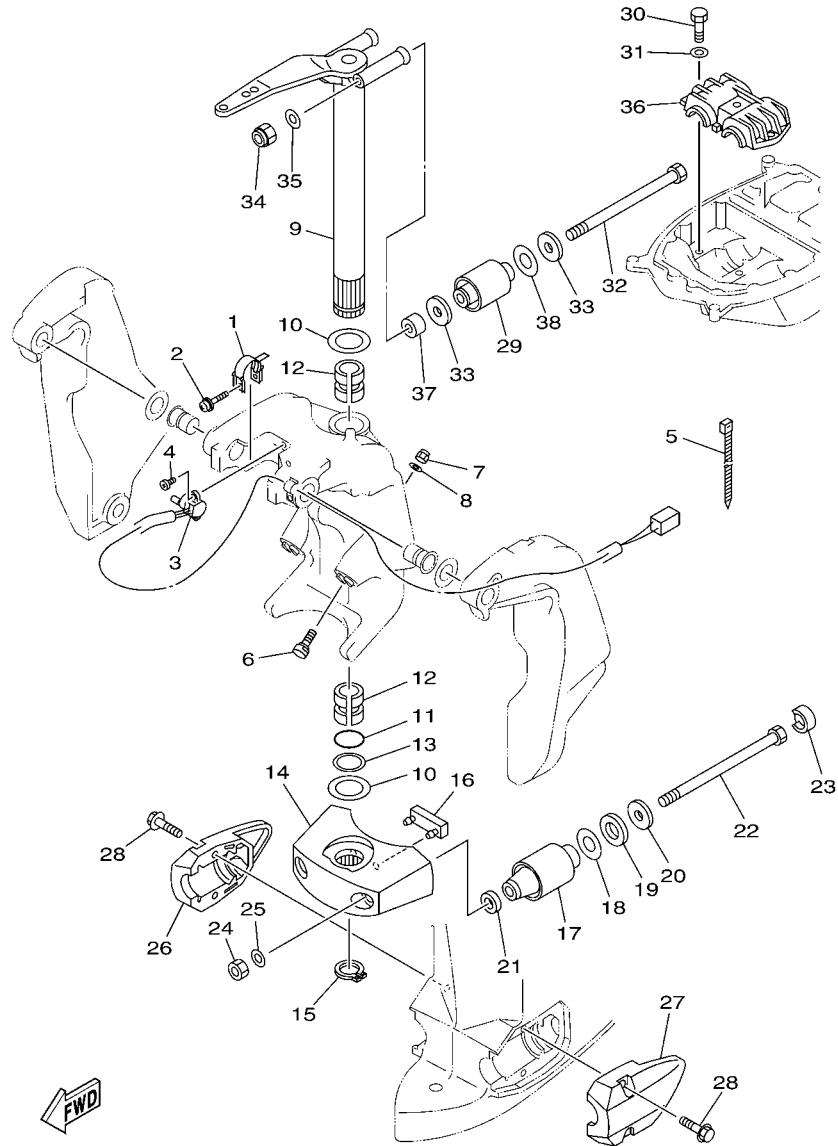
REF. NO.	PART NO.	DESCRIPTION	TLR	TXR	REMARKS
1	64E-43111-02-8D	BRACKET, CLAMP 1	1	1	
2	6G5-45251-02	ANODE	1	1	
3	6G5-44526-00	PLATE	2	2	
4	97095-06030	BOLT	4	4	
5	92995-06100	WASHER, SPRING	4	4	
6	6E5-82148-00	WIRE, LEAD 4	1	1	
7	97095-06010	BOLT	1	1	
8	92995-06600	WASHER	1	1	
9	64E-43112-02-8D	BRACKET, CLAMP 2	1	1	
10	6E5-82148-00	WIRE, LEAD 4	1	1	
11	97885-06012	SCREW, PAN HEAD	1	1	
12	92995-06600	WASHER	1	1	
13	93700-06M03	NIPPLE, GREASE	1	1	
14	64E-43131-10	BOLT, CLAMP BRACKET	1	1	
15	97095-08020	BOLT	1	1	
16	92995-08100	WASHER	1	1	
17	90386-25M31	BUSH	2	2	
18	90201-26M59	WASHER, PLATE	2	2	
19	90185-22007	NUT, SELF-LOCKING	1	1	
20	90465-11M10	CLAMP	1	1	
21	64E-43311-10-8D	BRACKET, SWIVEL 1	1	1	
22	90465-08M63	CLAMP	1	1	
23	93700-06M03	NIPPLE, GREASE	5	5	
24	66K-82149-00	WIRE, LEAD 3	1	1	
25	6G5-43144-00	HOOK, SPRING	1	1	
26	97095-06010	BOLT	1	1	
27	6G5-43181-10	LEVER, TILT STOP	1	1	



63P2110-D200

FIG. 21 BRACKET 1

REF. NO.	PART NO.	DESCRIPTION	TLR	TXR	REMARKS
28	6G5-43185-10	LEVER, TILT STOP	1	1	
29	90386-10M16	BUSH	4	4	
30	6G5-43148-00	COLLAR, DISTANCE	2	2	
31	90249-06M19	PIN	1	1	
32	90387-10M05	COLLAR	1	1	
33	91690-30020	PIN, SPRING	2	2	
34	90506-16003	SPRING, TENSION	1	1	
35	64E-43126-00	PIN, UPPER SHOCK MOUNT	1	1	
36	90386-22M98	BUSH	4	4	
37	93410-22M11	CIRCLIP	1	1	
38	97095-06010	BOLT	1	1	
39	92995-06600	WASHER	1	1	
40	90101-12M05	BOLT (L:130MM)	4	4	UR
	90101-12M77	BOLT (L:150MM)	2	2	UR
41	90201-13M01	WASHER, PLATE	8	8	
42	90201-12M05	WASHER, PLATE	4	4	
43	95380-12600	NUT	8	8	

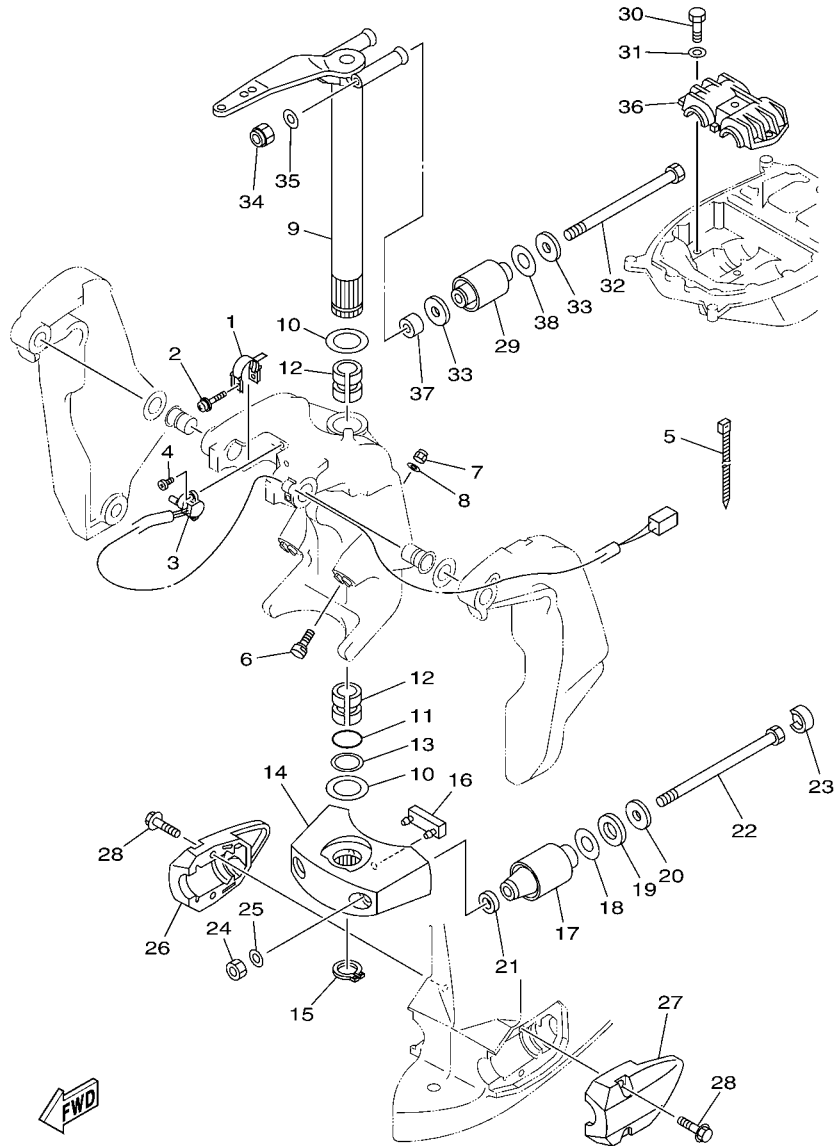


63P6110-H220

FIG. 22 BRACKET 2

REF. NO.	PART NO.	DESCRIPTION	TLR	TXR	REMARKS
1	64E-43139-10	CAM, TRIM SENDER	1	1	
2	90159-05059	SCREW, WITH WASHER	1	1	
3	67H-83672-00	TRIM SENDER	1	1	
4	97885-06016	SCREW, PAN HEAD	2	2	
5	90465-11M10	CLAMP	3	3	
6	63P-43376-00	BOLT, THRUST RECEIVER	2	2	
7	95780-10300	NUT, FLANGE	2	2	
8	92995-10600	WASHER	2	2	
9	66K-42510-02-8D	STEERING BRACKET ASSY	1	1	
10	90201-38M60	WASHER, PLATE	2	2	
11	93210-37MH7	O-RING	1	1	
12	90386-38M32	BUSH	2	2	
13	90202-40M47	WASHER, PLATE	1	1	
14	68V-44551-00-8D	HOUSING, LOWER MOUNT RUBBER	1	1	
15	93410-37M04	CIRCLIP	1	1	
16	61A-44575-00	DAMPER, LOWER MOUNT RUBBER	1	1	
17	60V-44555-00-94	MOUNT DAMPER, LOWER SIDE	2		L(20.3")
	63P-44555-00-94	MOUNT DAMPER, LOWER SIDE	2		X(25.3")
18	90201-35008	WASHER, PLATE	2	2	
19	90202-32M19	WASHER, PLATE	2	2	
20	90201-16M55	WASHER, PLATE	2	2	
21	90201-15M58	WASHER, PLATE	2	2	
22	90109-14007	BOLT	2	2	
23	69J-44533-00	DAMPER, UPPER MOUNT RUBBER	2	2	
24	95380-14600	NUT	2	2	
25	92995-14600	WASHER	2	2	
26	63P-44553-00-8D	COVER, LOWER MOUNT	1	1	

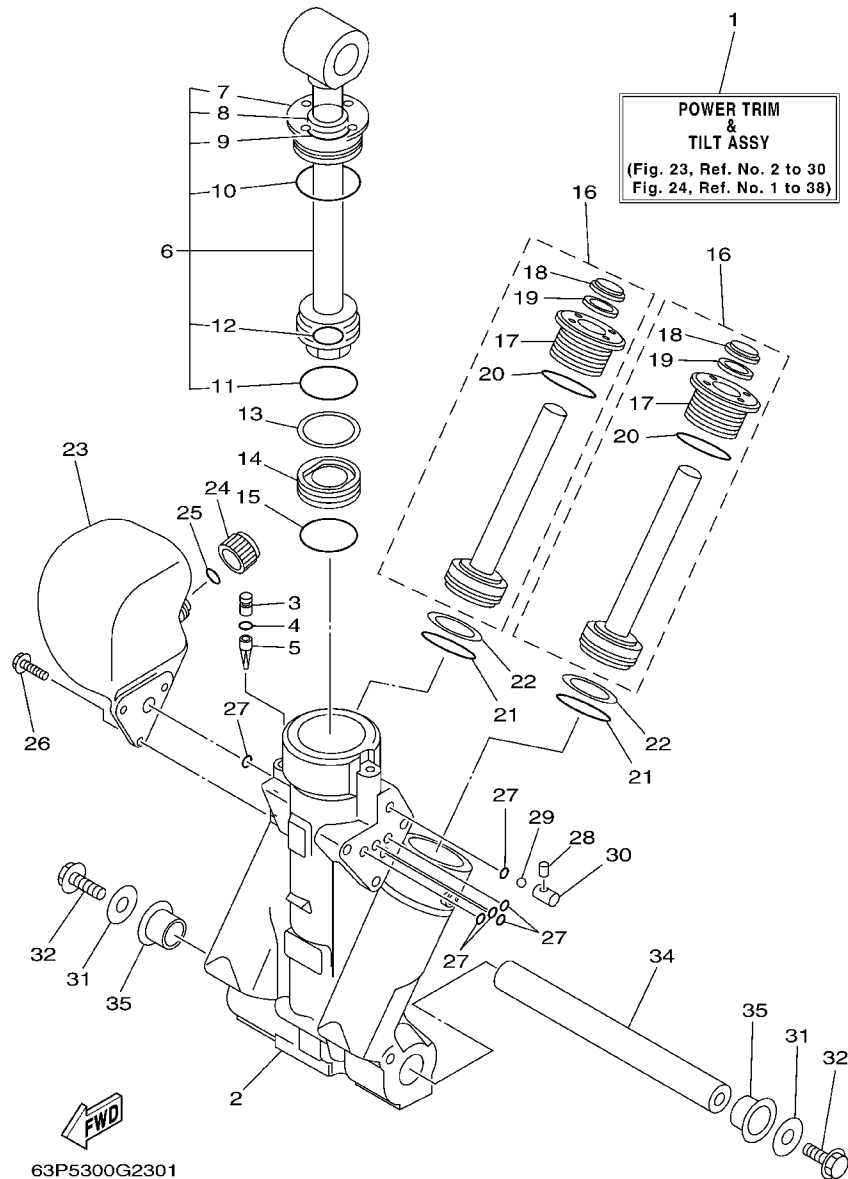




63P6110-H220

FIG. 22 BRACKET 2

REF. NO.	PART NO.	DESCRIPTION	TLR	TXR	REMARKS
27	63P-44556-00-8D	COVER, LOWER MOUNT 2	1	1	
28	90119-10049	BOLT, WITH WASHER	4	4	
29	63P-44514-00-94	MOUNT DAMPER, UPPER SIDE	2	2	
30	97075-10045	BOLT	3	3	
31	92995-10600	WASHER	3	3	
32	90109-14005	BOLT	2	2	
33	90201-16M01	WASHER, PLATE	4	4	
34	90185-14M00	NUT, SELF-LOCKING	2	2	
35	92995-14600	WASHER	2	2	
36	63P-44511-00-94	COVER, UPPER MOUNT	1	1	
37	90387-14004	COLLAR	2	2	
38	90202-28001	WASHER, PLATE	2	2	



**FIG. 23 POWER TRIM & TILT ASSY 1**

REF. NO.	PART NO.	DESCRIPTION	TLR	TXR	REMARKS
1	63P-43800-02-8D	POWER TRIM & TILT ASSY	1	1	
2	64E-43825-02	HOUSING, TRIM & TILT	1	1	
3	64E-4388J-00	PLUG 2	1	1	
4	93210-10M74	O-RING	1	1	
5	64E-43817-00	FILTER 2	1	1	
6	63P-43810-01	TILT PISTON SUB ASSY	1	1	
7	64E-43811-01	.SCREW, CYLINDER END	1	1	
8	64E-43898-00	.SEAL ,DUST 2	1	1	
9	64E-43867-00	.O-RING	1	1	
10	64E-43866-00	.O-RING	1	1	
11	6E5-43862-00	.O-RING	1	1	
12	64E-43883-00	.O-RING	1	1	
13	6E5-43872-00	RING, BACK UP	1	1	
14	6E5-43814-02	PISTON, FREE	1	1	
15	6E5-43862-00	O-RING	1	1	
16	64E-43820-01	TRIM PISTON SUB ASSY	2	2	
17	64E-43821-01	.SCREW, TRIM CYLINDER END	1	1	
18	64E-43822-00	.SEAL, TRIM DUST	1	1	
19	64E-4384J-00	.SEAL, TRIM DOWN	1	1	
20	6G5-43864-00	.O-RING	1	1	
21	6E5-43864-00	O-RING	2	2	
22	6E5-43874-01	RING, BACK UP	2	2	
23	64E-43828-00	BODY, RESERVOIR	1	1	
24	64E-43829-00	PLUG, RESERVOIR	1	1	
25	64E-43897-00	O-RING	1	1	
26	64E-4388E-00	BOLT ,SCREW (L:14MM)	3	3	
27	64E-43869-00	O-RING	6	6	

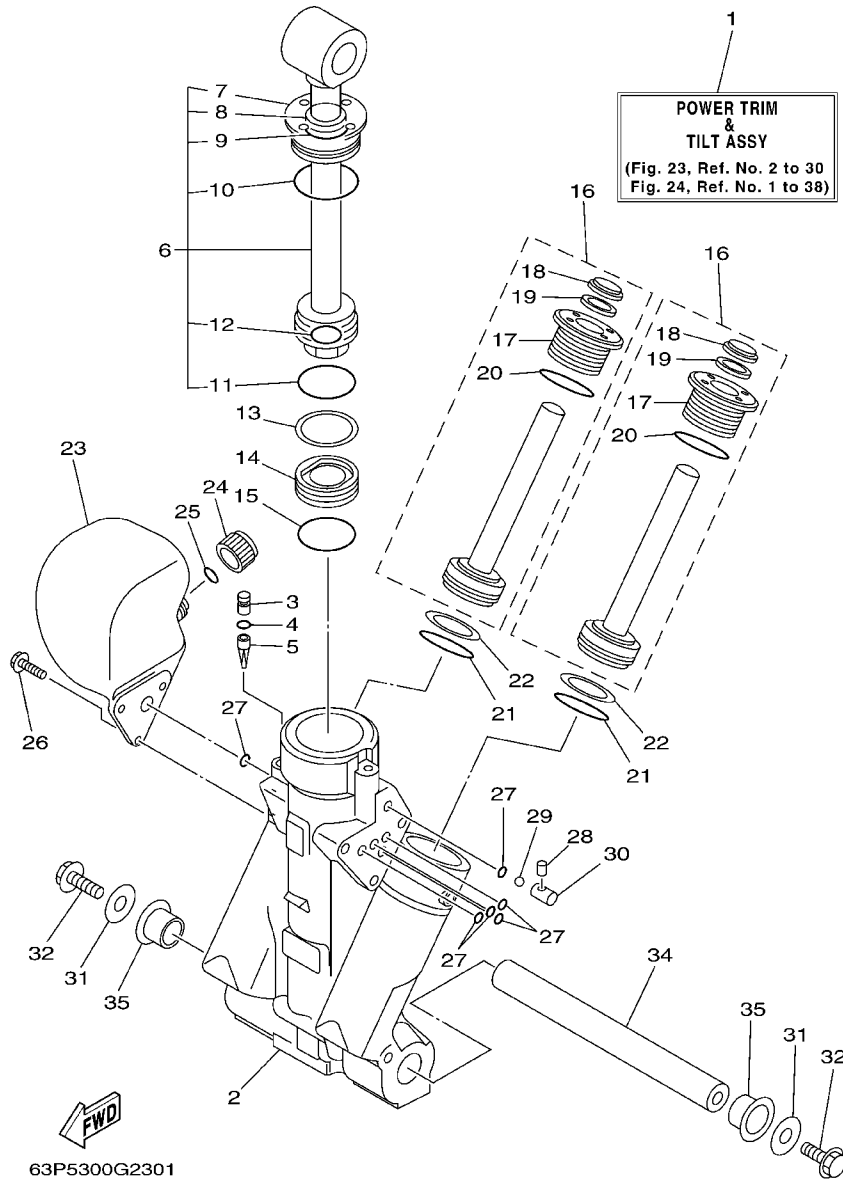
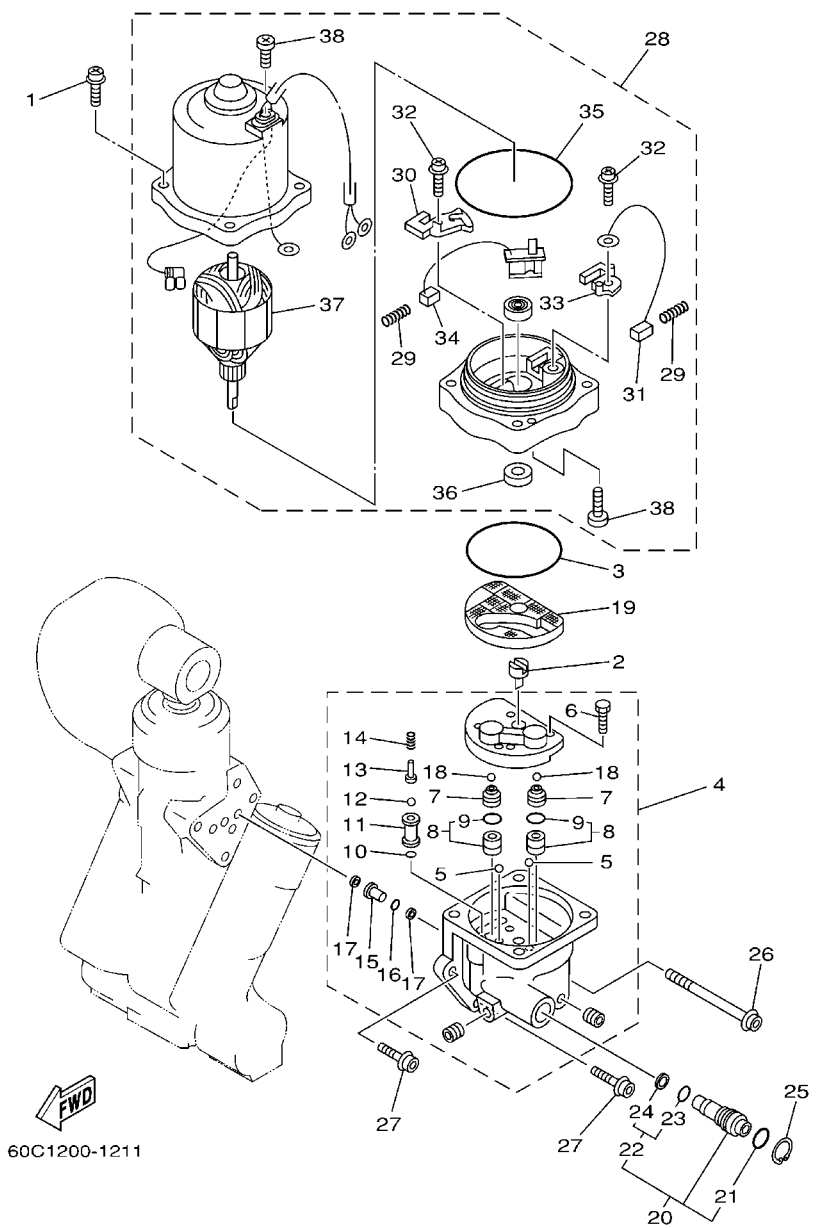


FIG. 23 POWER TRIM & TILT ASSY 1

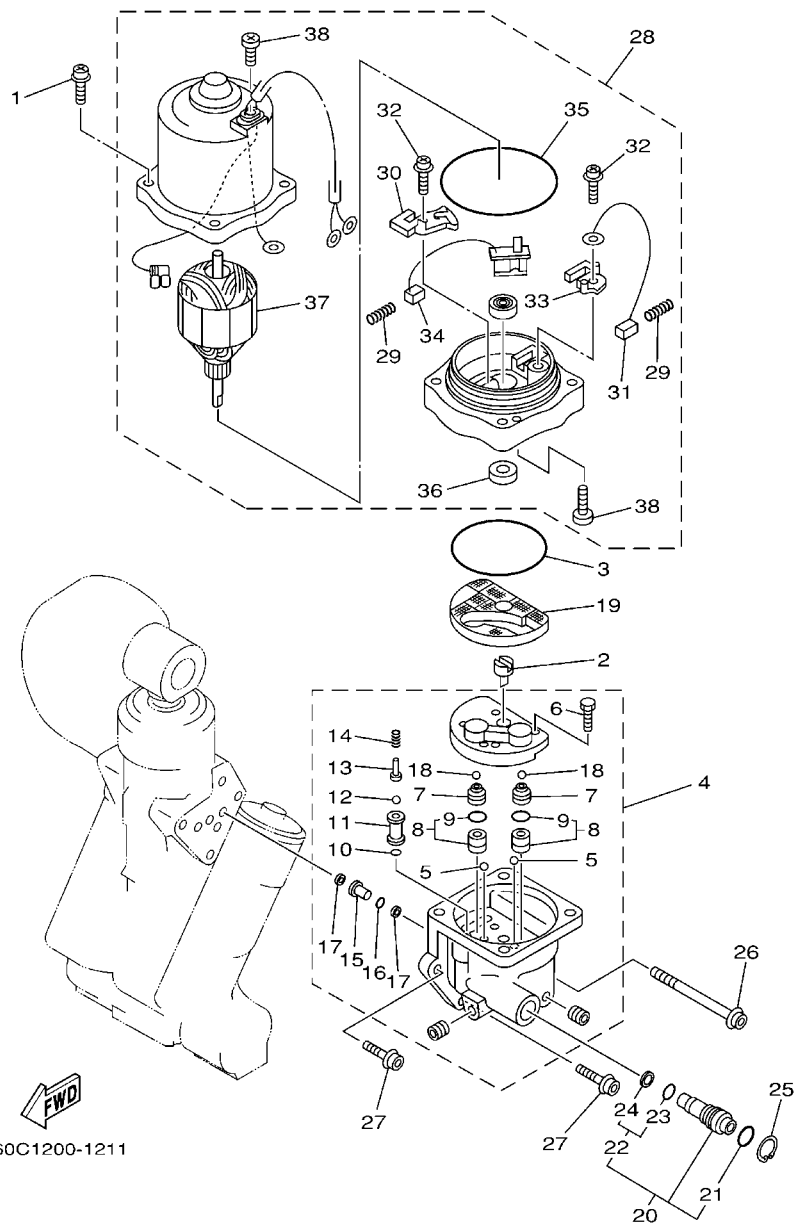
REF. NO.	PART NO.	DESCRIPTION	TLR	TXR	REMARKS
28	64E-4381G-00	PIN	1	1	
29	6E5-43858-00	BALL	1	1	
30	64E-4382G-00	VALVE, SEAT	1	1	
31	90201-10060	WASHER, PLATE	2	2	
32	97575-10530	BOLT, WITH WASHER	2	2	
<hr style="border-top: 1px dashed black;"/>					
34	6BC-43818-00	PIN, LOWER SHOCK MOUNT	1	1	
35	90386-22M98	BUSH	2	2	
<hr style="border-top: 1px dashed black;"/>					
<hr style="border-top: 1px dashed black;"/>					
<hr style="border-top: 1px dashed black;"/>					
<hr style="border-top: 1px dashed black;"/>					
<hr style="border-top: 1px dashed black;"/>					
<hr style="border-top: 1px dashed black;"/>					
<hr style="border-top: 1px dashed black;"/>					
<hr style="border-top: 1px dashed black;"/>					

FIG. 24 POWER TRIM & TILT ASSY 2



REF. NO.	PART NO.	DESCRIPTION	TLR	TXR	REMARKS
1	64E-4388E-10	BOLT ,SCREW (L:34.7MM)	4	4	
2	64E-43831-00	CONNECTOR, SHAFT	1	1	
3	64E-43868-00	O-RING	1	1	
4	64E-43830-00	GEAR PUMP ASSY	1	1	
5	72X-43858-00	.BALL	2	2	
6	64E-43843-00	.SCREW, VALVE LOCK	4	4	
7	64E-43841-00	.PISTON, SHUTTLE	2	2	
8	64E-43802-00	.VALVE SUB ASSY	2	2	
9	6E5-43896-00	..O-RING	1	1	
10	6G5-43863-00	.O-RING	1	1	
11	64E-43851-00	.SEAT, RELIEF VALVE	1	1	
12	64E-43858-00	.BALL	1	1	
13	64E-43859-00	.PIN, VALVE SUPPORT	1	1	
14	64E-43855-00	.SPRING, UP RELIEF	1	1	
15	64E-43850-00	.VALVE SUB ASSY	1	1	
16	64E-43865-00	.O-RING	1	1	
17	64E-43816-00	.FILTER 1	2	2	
18	64E-43858-00	.BALL	2	2	
19	64E-43817-10	FILTER 2	1	1	
20	64E-43860-00	MANUAL VALVE SUB-ASSY	1	1	
21	72X-85075-L0	.O-RING	1	1	
22	64E-43827-00	.RING SET	1	1	
23	64E-4387A-00	..O-RING	1	1	
24	64E-43873-00	..RING, BACK UP	1	1	
25	64E-43875-00	RING, SNAP	1	1	
26	64E-43879-10	SCREW, WITH WASHER	1	1	
27	64E-43879-00	SCREW, WITH WASHER	2	2	

**FIG. 24 POWER TRIM & TILT ASSY 2**



60C1200-1211

REF. NO.	PART NO.	DESCRIPTION	TLR	TXR	REMARKS
28	67H-43880-02	MOTOR ASSY	1	1	
29	6H1-4386K-10	.SPRING, BRUSH	2	2	
30	64E-4380J-00	.HOLDER, BRUSH	1	1	
31	64E-43891-00	.BRUSH 1	1	1	
32	97607-04310	.SCREW, WITH WASHER	2	2	
33	64E-4380F-00	.HOLDER, BRUSH 2	1	1	
34	64E-43892-00	.BRUSH 2	1	1	
35	6G5-43865-00	.O-RING	1	1	
36	93102-08M43	.OIL SEAL	1	1	
37	64E-43805-00	.ARMATURE ASSY	1	1	
38	64E-43843-10	.SCREW, VALVE LOCK	3	3	

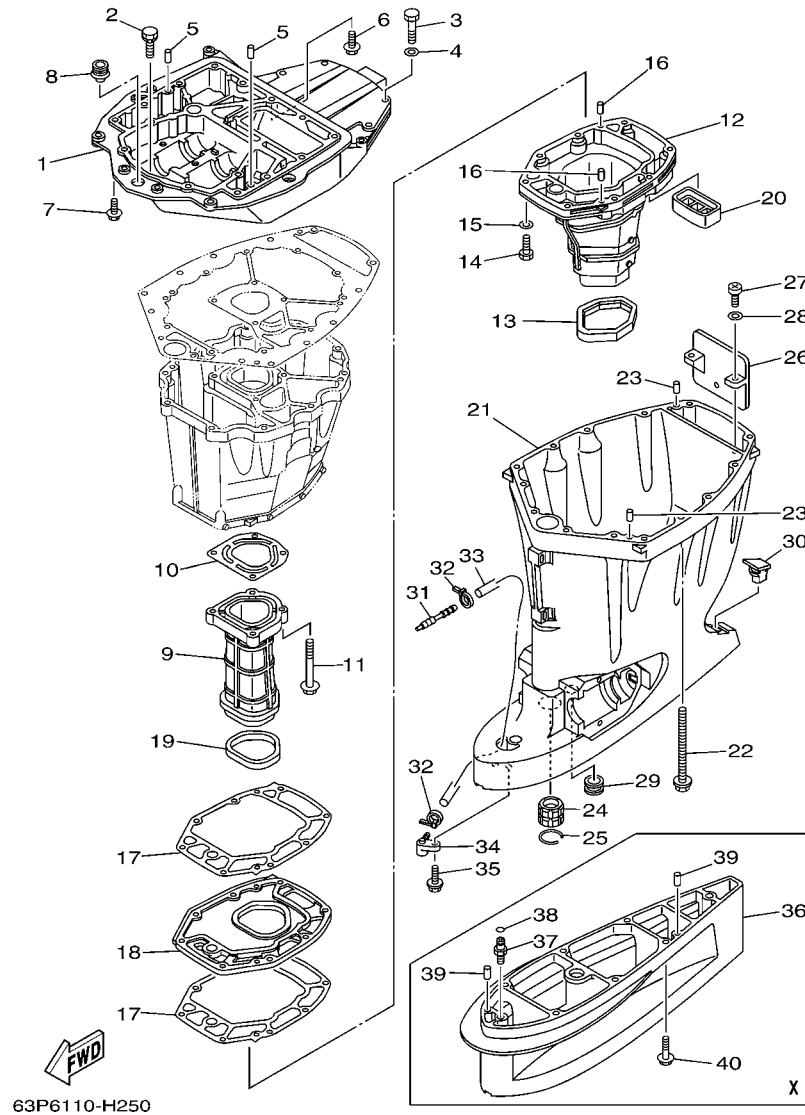


FIG. 25 UPPER CASING

REF. NO.	PART NO.	DESCRIPTION	TLR	TXR	REMARKS
1	63P-41137-01-CA	GUIDE, EXHAUST	1	1	
2	90119-08M79	BOLT, WITH WASHER	2	2	
3	97075-10045	BOLT	4	4	
4	92995-10600	WASHER	4	4	
5	93608-16M16	PIN, DOWEL	2	2	
6	90119-08M58	BOLT, WITH WASHER	3	3	
7	97575-10535	BOLT, WITH WASHER	4	4	
8	6E5-42724-00	GROMMET	1	1	
9	63P-41131-01-9S	MANIFOLD, EXT. 1	1	1	
10	63P-41133-A0	GASKET, EXHAUST MANIFOLD 1	1	1	
11	97575-08560	BOLT, WITH WASHER	4	4	
12	63P-14711-01-9S	MUFFLER 1	1	1	
13	69J-45123-00	GASKET, MUFFLER	1	1	
14	97075-08035	BOLT	8	8	
15	92995-08600	WASHER	8	8	
16	93606-19M23	PIN, DOWEL	2	2	
17	63P-41134-A0	GASKET, EXHAUST MANIFOLD	2	2	
18	63P-45181-01-9S	PLATE	1	1	
19	63P-41138-00	SEAL, EXT. 1	1	1	
20	69J-45127-00	SEAL	1	1	
21	63P-45111-00-8D	CASING, UPPER	1	1	
22	90119-10007	BOLT, WITH WASHER	8	8	
23	93608-16M16	PIN, DOWEL	2	2	
24	6E5-45318-00	BUSHING, DRIVE SHAFT	1	1	
25	93420-36M01	CIRCLIP	1	1	
26	69J-14624-01	COVER, EXHAUST	1	1	
27	97880-06016	SCREW, PAN HEAD	2	2	

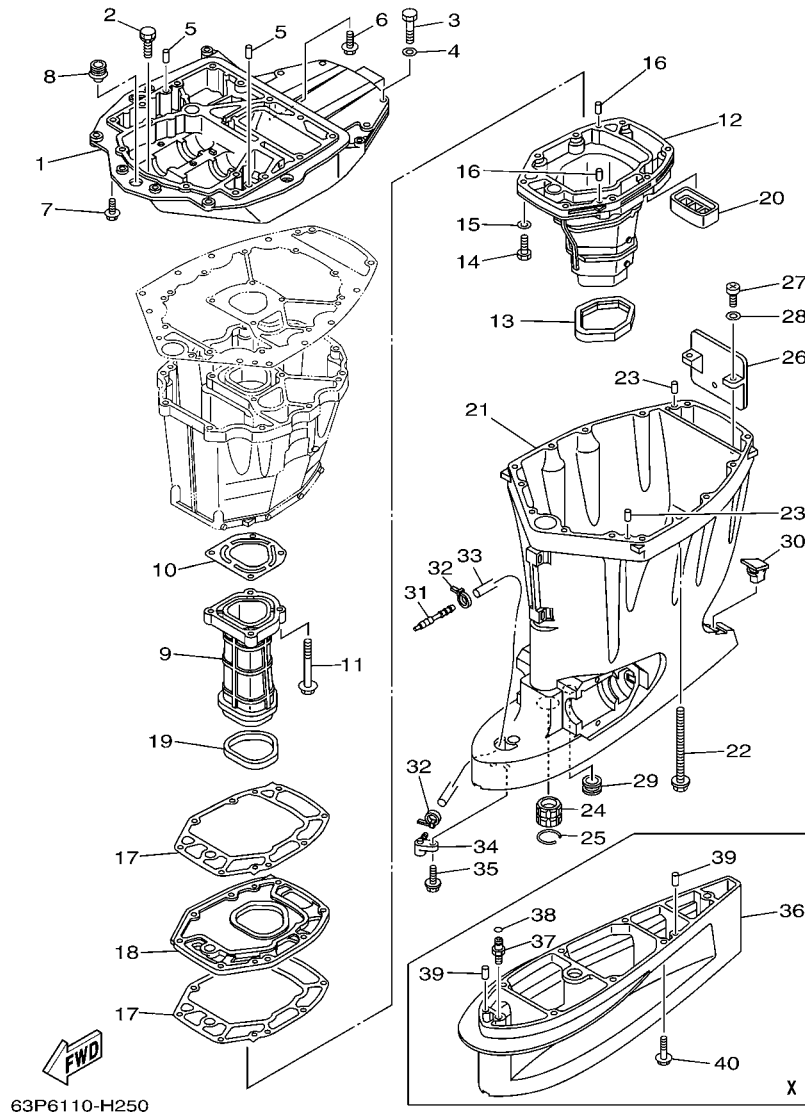


FIG. 25 UPPER CASING

REF. NO.	PART NO.	DESCRIPTION	TLR	TXR	REMARKS
28	92990-06600	WASHER, PLATE	2	2	
29	6E5-44366-00	DAMPER, WATER SEAL	1	1	
30	6C5-45155-00	CAP	1	1	
31	6E5-83558-00	END, NIPPLE	1	1	
32	90465-11M10	CLAMP	2	2	
33	90445-070F1	HOSE (L950)	1	1	
34	63P-45379-00	NIPPLE, HOSE	1	1	
35	90119-06M18	BOLT, WITH WASHER	1	1	
36	63P-45211-00-8D	EXTENSION	1		X(25.3")
37	63P-45378-00	NIPPLE, HOSE	1		X(25.3")
38	93210-07003	O-RING	1		X(25.3")
39	93608-16M16	PIN, DOWEL	2		X(25.3")
40	90119-10038	BOLT, WITH WASHER	6		X(25.3")

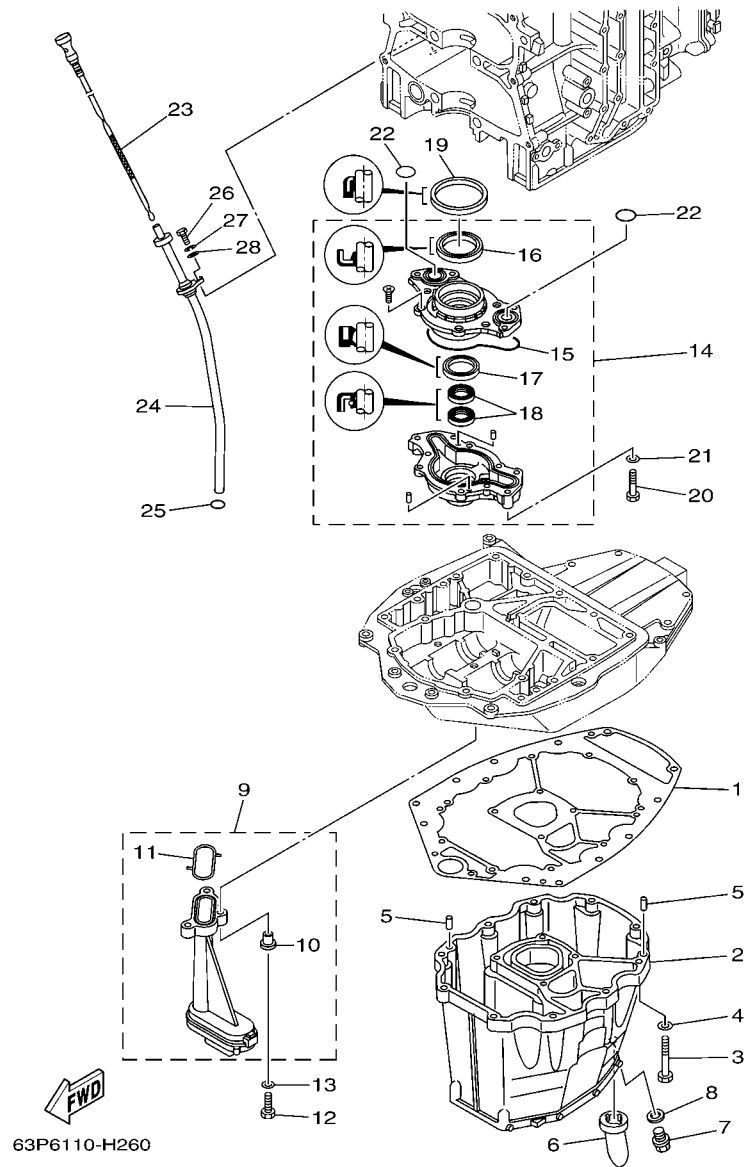


FIG. 26 OIL PAN

REF. NO.	PART NO.	DESCRIPTION	TLR	TXR	REMARKS
1	63P-15312-00	GASKET, OIL PAN	1	1	
2	63P-15311-01-CA	OIL PAN	1	1	
3	97075-08035	BOLT	10	10	
4	92995-08600	WASHER	10	10	
5	93608-16M16	PIN, DOWEL	2	2	
6	63P-15316-00	DAMPER 1	1	1	
7	90340-14M06	PLUG, STRAIGHT SCREW	1	1	
8	90430-14M09	GASKET	1	1	
9	63P-13411-00	STRAINER, OIL	1	1	
10	90387-06M64	.COLLAR	3	3	
11	63P-13415-00	.SEAL, OIL STRAINER	1	1	
12	97027-06025	BOLT, HEXAGON	3	3	
13	92907-06600	WASHER, PLATE	3	3	
14	63P-13300-01	OIL PUMP ASSY	1	1	
15	63P-13329-00	.GASKET, PUMP COVER	1	1	
16	69J-13338-00	.OIL SEAL	1	1	
17	6AW-13119-00	.OIL SEAL	1	1	
18	69J-13631-00	.OIL SEAL	2	2	
19	69J-11355-00	SEAL, CYLINDER 1	1	1	
20	97095-06040	BOLT	4	4	
21	92995-06600	WASHER	4	4	
22	93210-25552	O-RING	2	2	
23	63P-15362-00	PLUG, OIL LEVEL	1	1	
24	63P-15377-00	GUIDE, INLET	1	1	
25	93210-19MJ3	O-RING	1	1	
26	97095-06020	BOLT	1	1	
27	92995-06100	WASHER, SPRING	1	1	



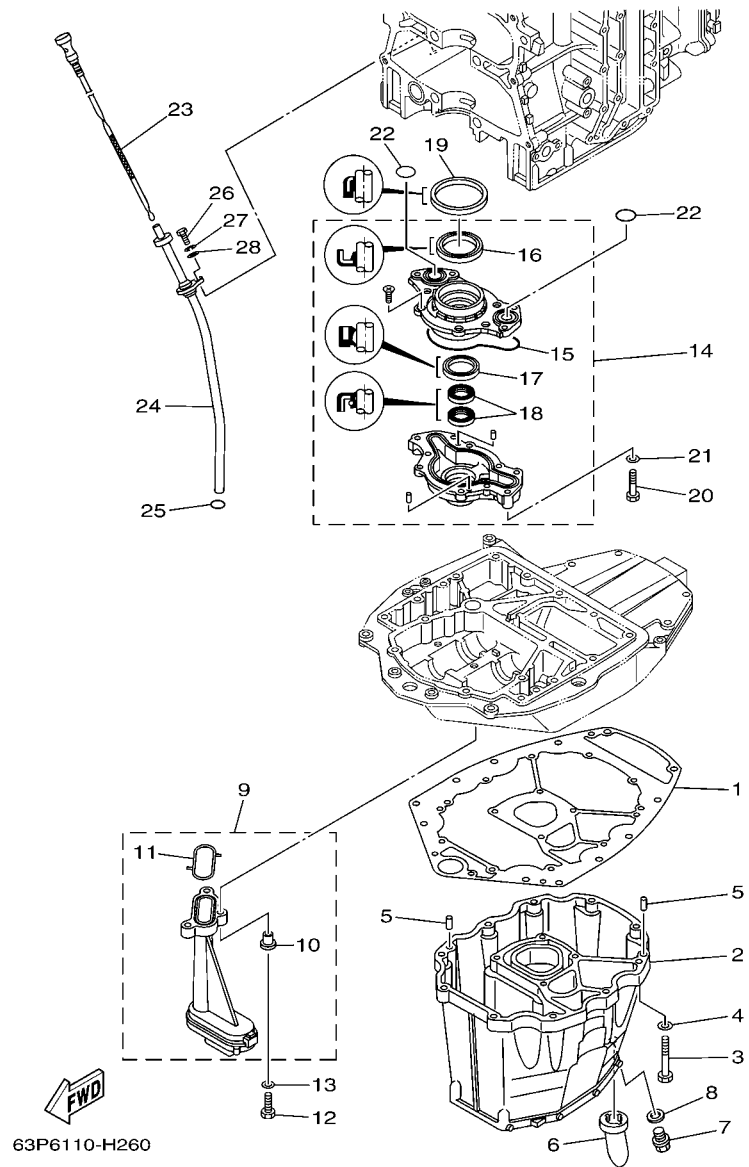


FIG. 26 OIL PAN

REF. NO.	PART NO.	DESCRIPTION	TLR	TXR	REMARKS
28	92995-06600	WASHER	1	1	
-----					
-----					
-----					
-----					
-----					
-----					
-----					
-----					
-----					
-----					

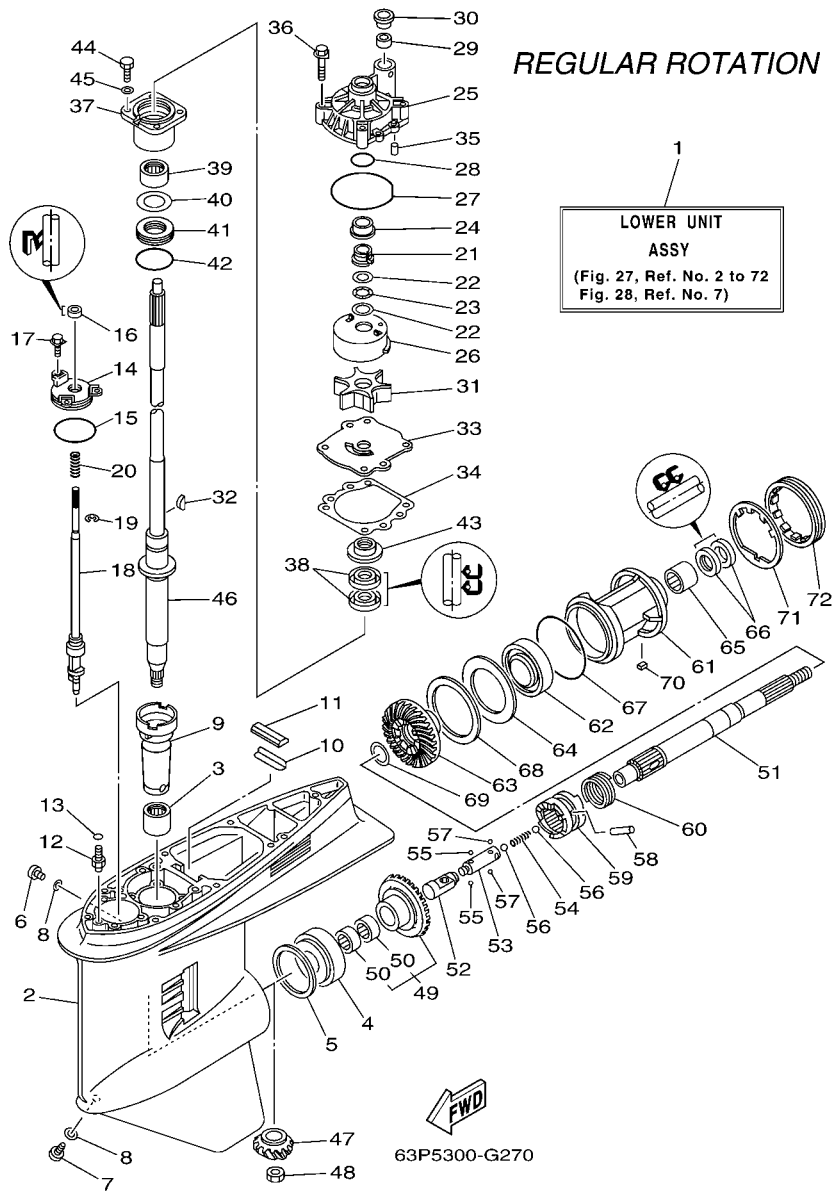


FIG. 27 LOWER CASING & DRIVE 1

REF. NO.	PART NO.	DESCRIPTION	TLR	TXR	REMARKS
1	63P-45300-02-8D	LOWER UNIT ASSY	1		L(20.3"),RH
	63P-45300-12-8D	LOWER UNIT ASSY		1	X(25.3"),RH
2	6J9-45301-05-8D	CASING, LOWER	1	1	
3	93311-928U5	BEARING	1	1	
4	93332-000V3	BEARING	1	1	
5	6G5-45567-01	SHIM (T:0.10MM)	1	1	UR
	6G5-45567-10	SHIM (T:0.12MM)	1	1	UR
	6G5-45567-20	SHIM (T:0.15MM)	1	1	UR
	6G5-45567-30	SHIM (T:0.18MM)	1	1	UR
	6G5-45567-40	SHIM (T:0.30MM)	1	1	UR
	6G5-45567-50	SHIM (T:0.40MM)	1	1	UR
	6G5-45567-60	SHIM (T:0.50MM)	1	1	UR
6	90340-08002	PLUG, STRAIGHT SCREW	1	1	
7	688-45341-10	PLUG, DRAIN	1	1	
8	90430-08020	GASKET	2	2	
9	6G5-45536-01	SLEEVE, DRIVE SHAFT	1	1	
10	663-45376-00-94	GUIDE, SEAL DAMPER	1	1	
11	688-45375-00	DAMPER, SEAL	1	1	
12	63P-45378-00	NIPPLE, HOSE	1	1	
13	93210-07003	O-RING	1	1	
14	6E5-45321-00	PLATE	1	1	
15	93210-58144	O-RING	1	1	
16	93106-09014	OIL SEAL	1	1	
17	90119-06M10	BOLT, WITH WASHER	3	3	
18	63P-44150-00	SHIFT CAM ASSY	1		L(20.3"),RH
	63P-44150-10	SHIFT CAM ASSY		1	X(25.3"),RH
19	99001-08600	CIRCLIP	1	1	

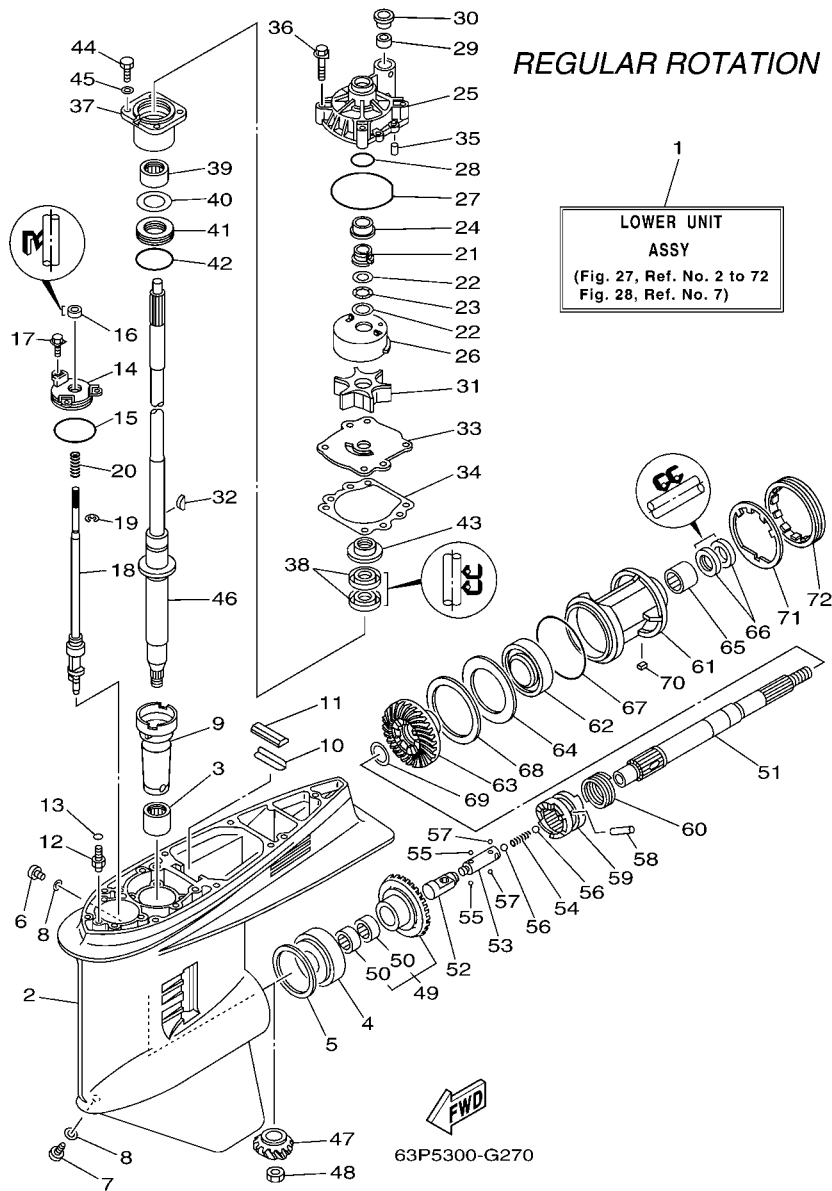


FIG. 27 LOWER CASING & DRIVE 1

REF. NO.	PART NO.	DESCRIPTION	TLR	TXR	REMARKS
20	90501-11M10	SPRING, COMPRESSION	1	1	
21	61A-45538-00	SPACER 1	1	1	
22	90201-22M01	WASHER, PLATE	2	2	
23	90206-22M19	WASHER, WAVE	1	1	
24	61A-45527-00	COLLAR, DRIVE SHAFT	1	1	
25	61A-44311-01	HOUSING, WATER PUMP	1	1	
26	61A-44322-02	INSERT, CARTRIDGE	1	1	
27	93210-86M38	O-RING	1	1	
28	93210-37160	O-RING	1	1	
29	6E5-44365-00	DAMPER, WATER SEAL	1	1	
30	6E5-44312-00	COVER, WATER PUMP HOUSING	1	1	
31	6E5-44352-01	IMPELLER	1	1	
32	90280-04M05	KEY, WOODRUFF	1	1	
33	6G5-44323-00	OUTER PLATE, CARTRIDGE	1	1	
34	6E5-44315-A0	GASKET, WATER PUMP	1	1	
35	93606-12019	PIN, DOWEL	2	2	
36	90119-08M14	BOLT, WITH WASHER	4	4	
37	6E5-45331-00-9S	HOUSING, BEARING	1	1	
38	93101-28M16	OIL SEAL	2	2	
39	93317-330U2	BEARING	1	1	
40	6E5-45587-01	SHIM (T:0.10MM)	1	1	UR
	6E5-45587-10	SHIM (T:0.12MM)	1	1	UR
	6E5-45587-20	SHIM (T:0.15MM)	1	1	UR
	6E5-45587-30	SHIM (T:0.18MM)	1	1	UR
	6E5-45587-40	SHIM (T:0.30MM)	1	1	UR
	6E5-45587-50	SHIM (T:0.40MM)	1	1	UR
	6E5-45587-60	SHIM (T:0.50MM)	1	1	UR

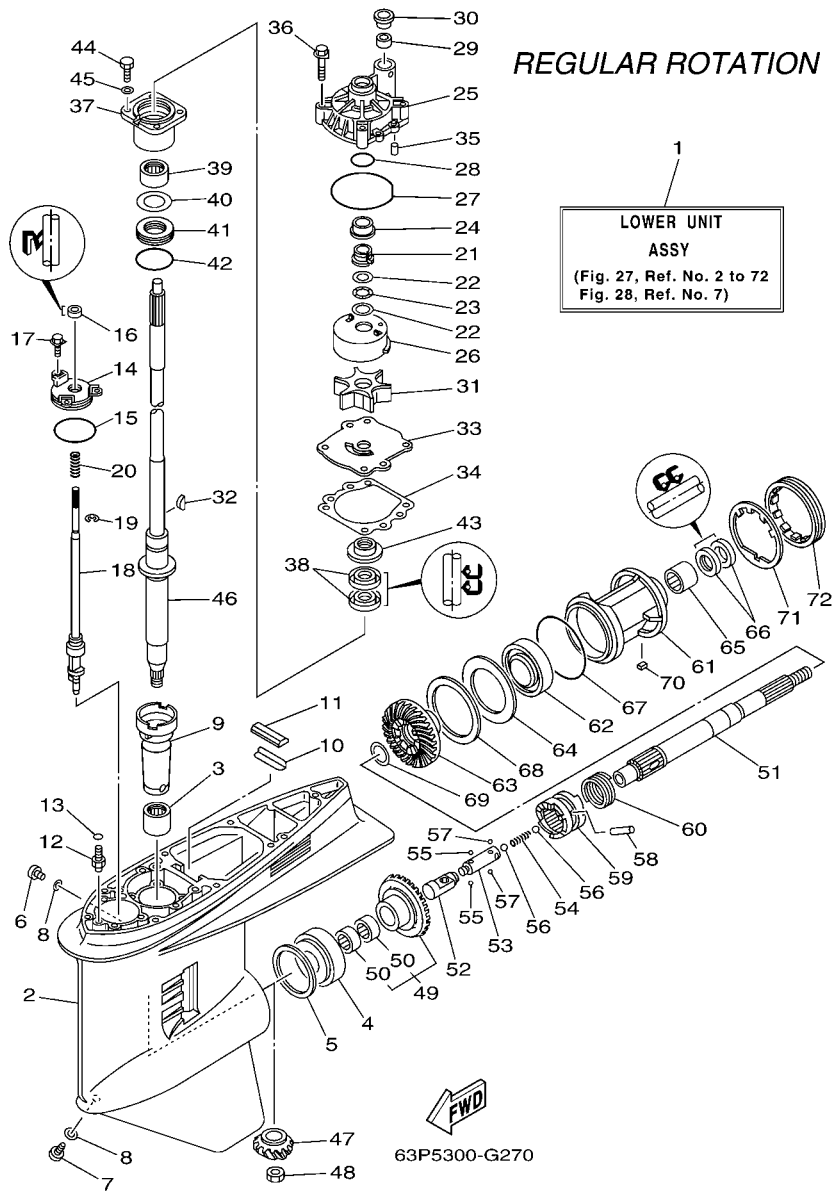


FIG. 27 LOWER CASING & DRIVE 1

REF. NO.	PART NO.	DESCRIPTION	TLR	TXR	REMARKS
41	93341-930V2	BEARING	1	1	
42	93210-55M14	O-RING	1	1	
43	6E5-45344-00	COVER, OIL SEAL	1	1	
44	97095-08025	BOLT	4	4	
45	92995-08600	WASHER	4	4	
46	63P-45501-00	DRIVE SHAFT COMP.	1		L(20.3")
	63P-45501-10	DRIVE SHAFT COMP.		1	X(25.3")
47	63P-45551-00	PINION (14T)	1	1	
48	90170-16M01	NUT	1	1	
49	63P-45560-02	GEAR 1 (28T)	1	1	
50	93315-425V3	.BEARING	2	2	
51	6J9-45611-01	SHAFT, PROPELLER	1	1	
52	6E5-45641-03	SHIFTER	1	1	
53	6E5-45634-01	SLIDE, SHIFT	1	1	
54	90501-16M37	SPRING, COMPRESSION	1	1	
55	93507-32009	BALL	2	2	
56	93511-32017	BALL	2	2	
57	93503-16003	BALL	2	2	
58	90250-08M07	PIN, STRAIGHT	1	1	
59	63P-45631-10	CLUTCH, DOG	1	1	
60	6E5-45633-01	RING, CROSS PIN	1	1	
61	6J9-45332-00-CA	HOUSING, BEARING	1	1	
62	93306-209U0	BEARING	1	1	
63	63P-45571-02	GEAR 2 (28T)	1	1	
64	6G5-45576-10	WASHER, THRUST	1	1	
65	93315-43061	BEARING	1	1	
66	93101-30M17	OIL SEAL	2	2	

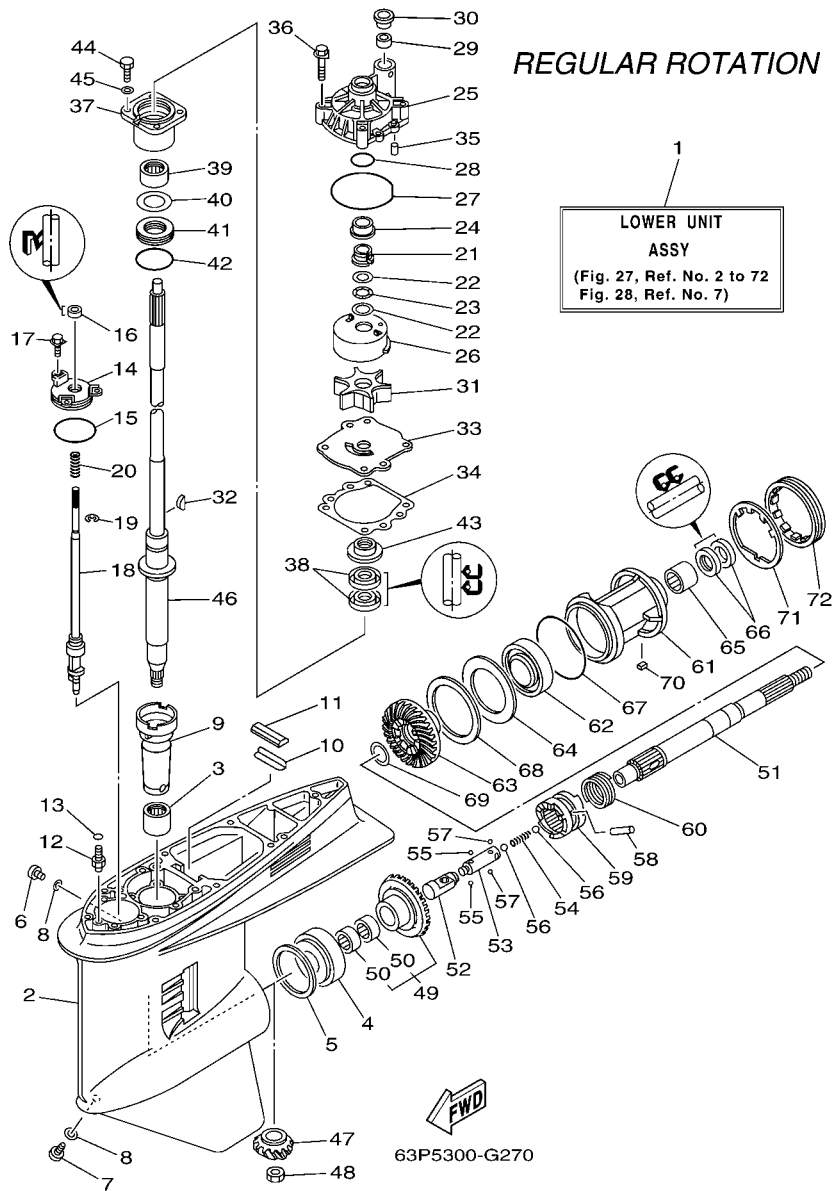


FIG. 27 LOWER CASING & DRIVE 1

REF. NO.	PART NO.	DESCRIPTION	TLR	TXR	REMARKS
67	93210-97M55	O-RING	1	1	
68	6G5-45577-02	SHIM (T:0.10MM)	1	1	UR
	6G5-45577-10	SHIM (T:0.12MM)	1	1	UR
	6G5-45577-20	SHIM (T:0.15MM)	1	1	UR
	6G5-45577-30	SHIM (T:0.18MM)	1	1	UR
	6G5-45577-40	SHIM (T:0.30MM)	1	1	UR
	6G5-45577-50	SHIM (T:0.40MM)	1	1	UR
	6G5-45577-60	SHIM (T:0.50MM)	1	1	UR
69	90201-30M92	WASHER, PLATE	1	1	
70	90282-04M00	KEY, STRAIGHT	1	1	
71	6G5-45383-01	WASHER, CLAW	1	1	
72	6G5-45384-00	NUT	1	1	

REGULAR ROTATION

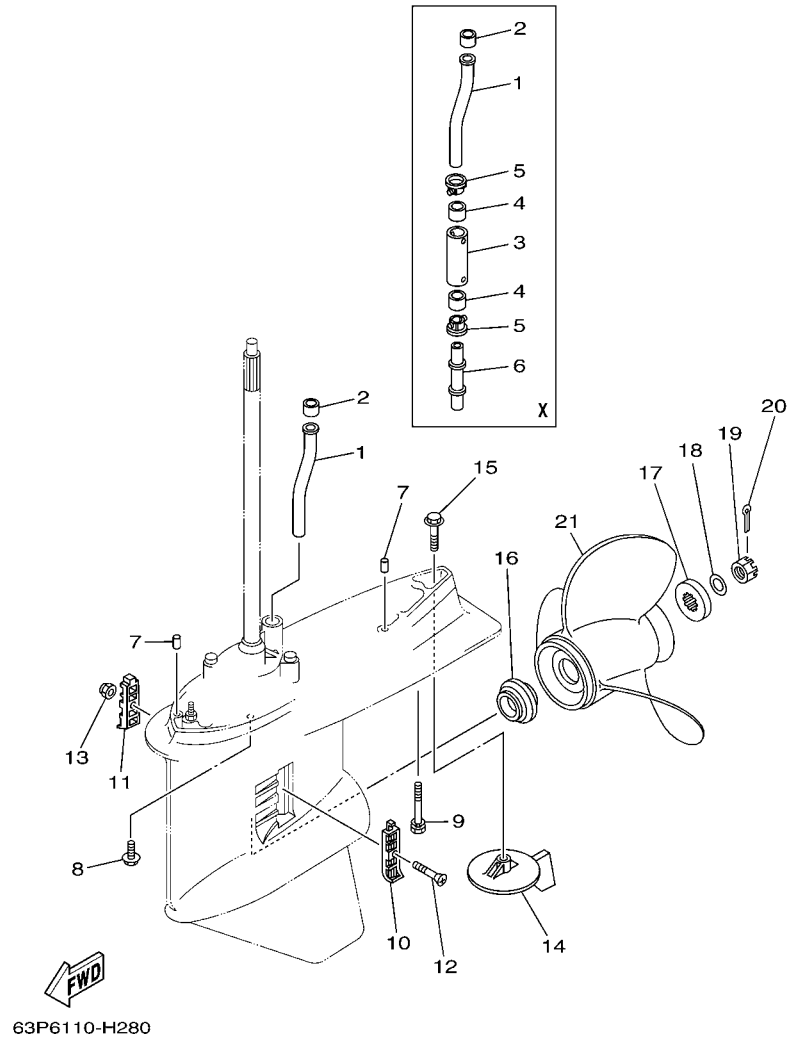


FIG. 28 LOWER CASING & DRIVE 2

REF. NO.	PART NO.	DESCRIPTION	TLR	TXR	REMARKS
1	63P-44361-00	TUBE, WATER	1	1	
2	6E5-44365-00	DAMPER, WATER SEAL	1	1	
3	63P-44362-00	TUBE, WATER		1	X(25.3")
4	6E5-44365-00	DAMPER, WATER SEAL		2	X(25.3")
5	6E5-44312-00	COVER, WATER PUMP HOUSING		2	X(25.3")
6	63P-44363-00	TUBE, WATER 3		1	X(25.3")
7	93608-16M16	PIN, DOWEL	2	2	
8	90119-10038	BOLT, WITH WASHER	6	6	
9	90119-10MA2	BOLT, WITH WASHER	1		L(20.3")
	90119-10008	BOLT, WITH WASHER	1		X(25.3")
10	6J9-45214-00	COVER, WATER INLET 1	1	1	
11	6J9-45215-00	COVER, WATER INLET 2	1	1	
12	90152-05M08	SCREW, COUNTERSUNK	1	1	
13	90185-05002	NUT, SELF-LOCKING	1	1	
14	6J9-45371-01	TAB-TRIM	1	1	
15	90105-10M00	BOLT, FLANGE	1	1	
16	63P-45987-00	SPACER	1	1	
17	688-45997-01	SPACER	1	1	
18	92990-18200	WASHER	1	1	
19	90171-18M04	NUT, CASTLE	1	1	
20	91490-40030	PIN, COTTER	1	1	
21	6G5-45941-00-98	PROPELLER (3X15-1/4"X15"-M)	1	1	UR
	6G5-45943-01-98	PROPELLER (3X13-3/4"X21"-M)	1	1	UR
	6G5-45945-01-98	PROPELLER (3X14"X19"-M)	1	1	UR
	6G5-45947-01-98	PROPELLER (3X14-1/2"X17"-M)	1	1	UR
	6G5-45949-00-98	PROPELLER (3X13-1/2"X23"-M)	1	1	UR
	6G5-45930-00-98	PROPELLER (3X13-3/8"X25"-M)	1	1	UR

REGULAR ROTATION

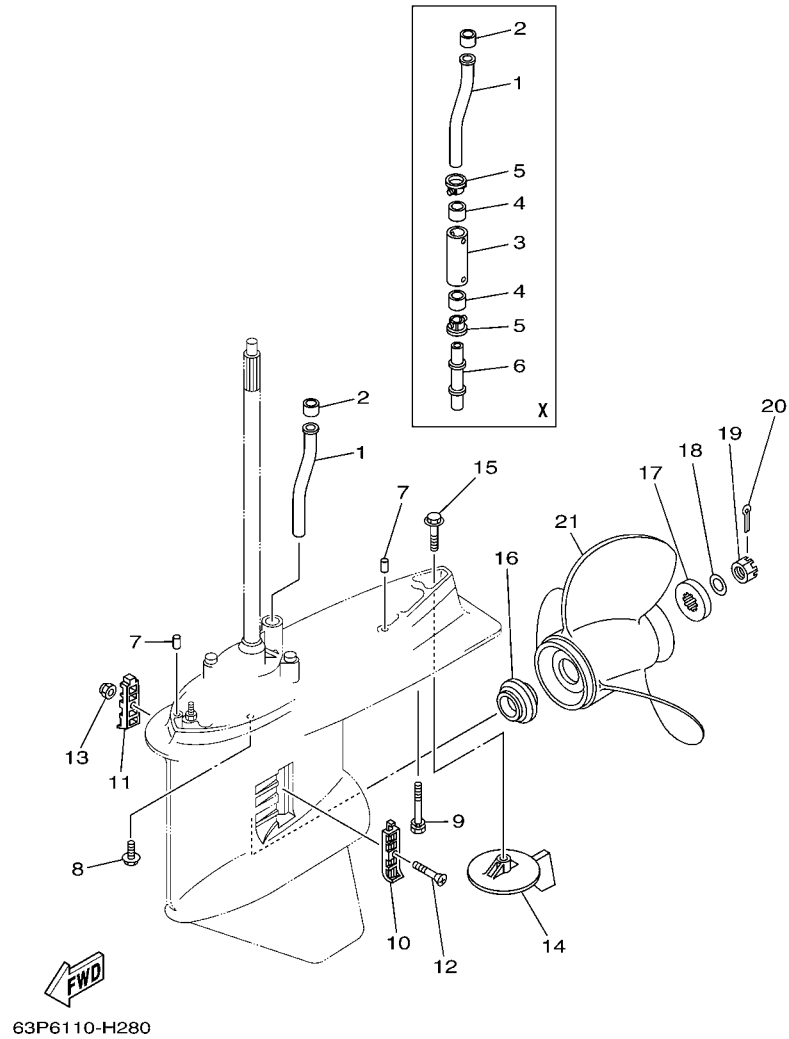


FIG. 28 LOWER CASING & DRIVE 2

REF. NO.	PART NO.	DESCRIPTION	TLR	TXR		REMARKS
21	6G5-45932-00-98	PROPELLER (3X15-3/4"X13"-M)	1	1		UR
	6G5-45970-02-98	PROPELLER (3X15-1/4"X15"-M)	1	1		UR
	6G5-45972-02-98	PROPELLER (3X13-3/4"X21"-M)	1	1		UR
	6G5-45974-03-98	PROPELLER (3X13-3/4"X19"-M2)	1	1		UR
	6G5-45976-01-98	PROPELLER (3X13-3/8"X23"-M)	1	1		UR
	6G5-45978-03-98	PROPELLER (3X13-3/4"X17"-M2)	1	1		UR
	6R4-45970-A1	PROPELLER (3X15-1/4"X19"-M)	1	1		UR
	6R4-45972-A0	PROPELLER (3X14-7/8"X21"-M)	1	1		UR
	6R4-45974-A0	PROPELLER (3X14-1/2"X23"-M)	1	1		UR
	6R4-45976-A0	PROPELLER (3X14-1/2"X15"-M)	1	1		UR
	6R4-45978-A0	PROPELLER (3X15-1/4"X17"-M)	1	1		UR
	66K-45970-B0	PROPELLER (3X14-1/2"X27"-M1)	1	1		UR
	66K-45972-B0	PROPELLER (3X14-1/2"X25"-M2)	1	1		UR
	66K-45974-B0	PROPELLER (3X14-1/2"X23"-M2)	1	1		UR
	6J9-45976-10	PROPELLER (3X14-1/2"X21"-M1)	1	1		UR

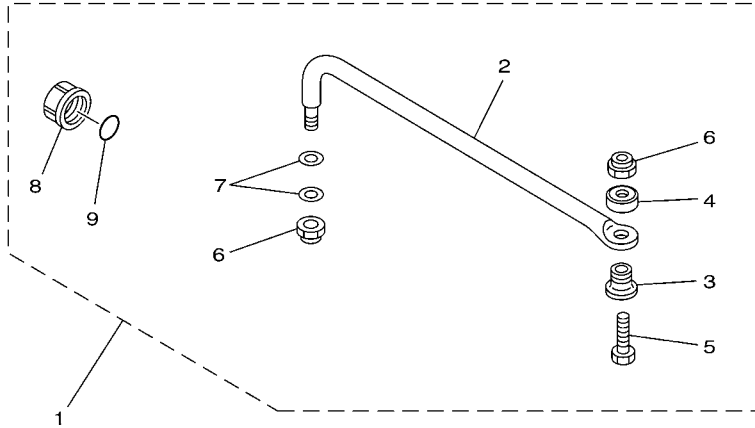


FIG. 29 STEERING GUIDE

REF. NO.	PART NO.	DESCRIPTION	TLR	TXR			REMARKS
1	6E5-61350-02	STEERING GUIDE ATTACHMENT KIT	1	1			AP
2	6E5-61351-01	.ROD, STEERING LINK	1	1			
3	90387-10M61	.COLLAR	1	1			
4	90560-12M01	.SPACER	1	1			
5	6E5-61355-00	.BOLT	1	1			
6	90185-09M01	.NUT, SELF-LOCKING	2	2			
7	90201-10M20	.WASHER, PLATE	2	2			
8	6E5-43145-01	.CAP, CLAMP BRACKET	1	1			
9	93210-16275	.O-RING	1	1			

67H0100-9290



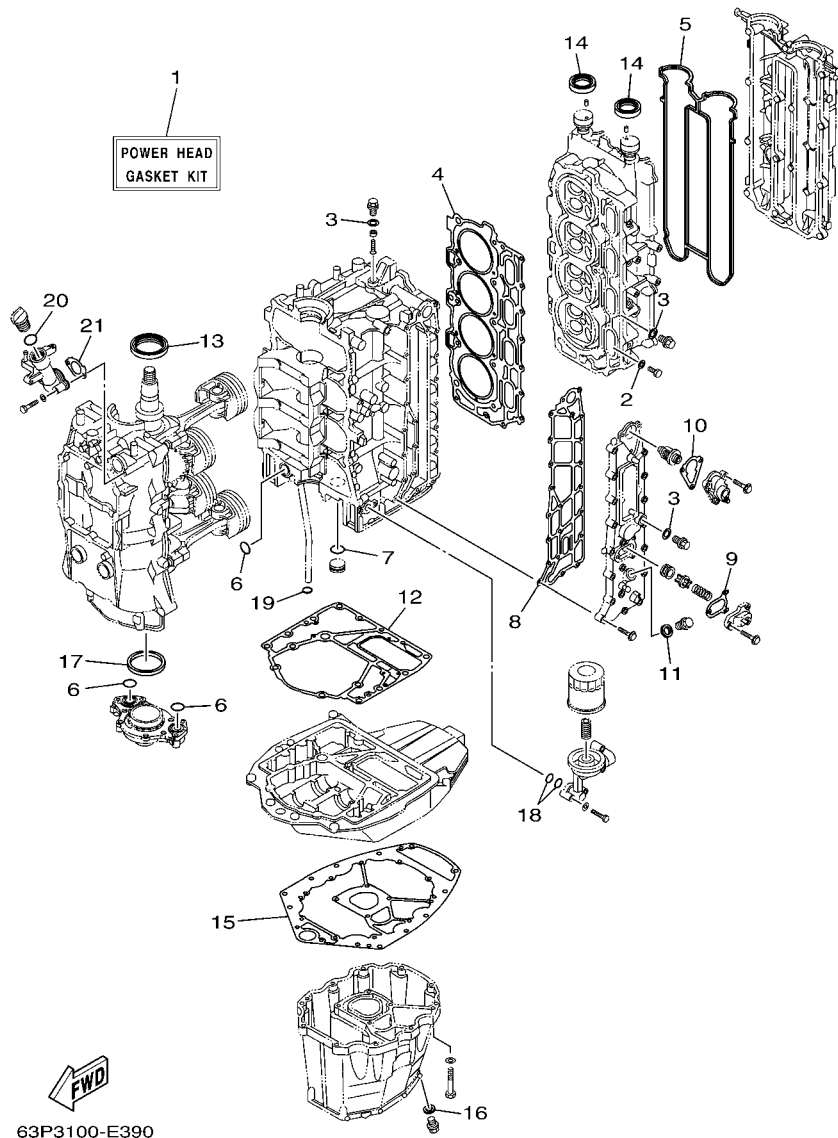
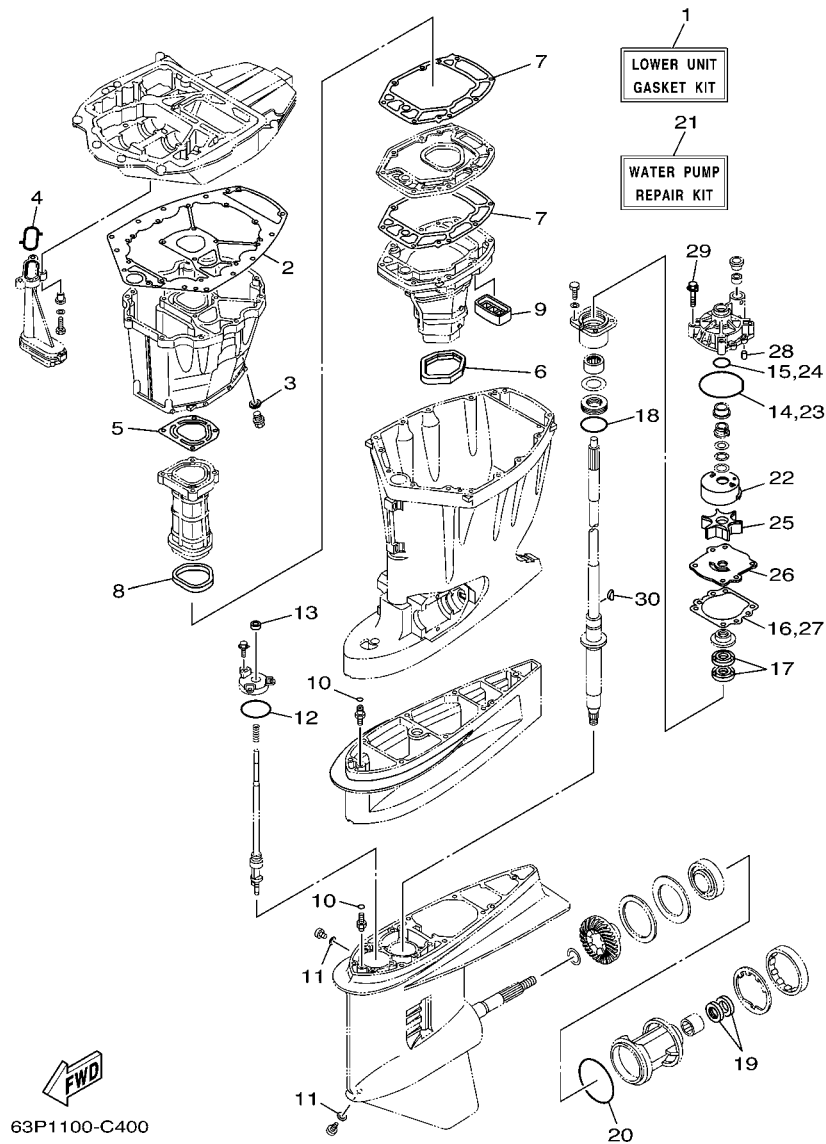


FIG. 30 REPAIR KIT 1

REF. NO.	PART NO.	DESCRIPTION	TLR	TXR	REMARKS
1	63P-W0001-01	POWER HEAD GASKET KIT	1	1	
2	90430-08143	.GASKET	4	4	
3	90430-14115	.GASKET	4	4	
4	63P-11181-00	.GASKET, CYLINDER HEAD 1	1	1	
5	63P-11193-00	.GASKET, HEAD COVER 1	1	1	
6	93210-25552	.O-RING	3	3	
7	93210-25647	.O-RING	1	1	
8	63P-41114-A1	.GASKET, EXHAUST OUTER COVER	1	1	
9	67F-12435-A0	.GASKET	1	1	
10	63P-12414-00	.GASKET, COVER	1	1	
11	90430-18130	.GASKET	1	1	
12	63P-11351-00	.GASKET, CYLINDER	1	1	
13	93102-60004	.OIL SEAL	1	1	
14	93102-38M59	.OIL SEAL	2	2	
15	63P-15312-00	.GASKET, OIL PAN	1	1	
16	90430-14M09	.GASKET	1	1	
17	69J-11355-00	.SEAL, CYLINDER 1	1	1	
18	93210-19MJ1	.O-RING	2	2	
19	93210-19MJ3	.O-RING	1	1	
20	93210-24M79	.O-RING	1	1	
21	63P-15364-A0	.GASKET, OIL PLUG	1	1	



63P1100-C400

FIG. 31 REPAIR KIT 2

REF. NO.	PART NO.	DESCRIPTION	TLR	TXR	REMARKS
1	63P-W0001-20	LOWER UNIT GASKET KIT	1	1	
2	63P-15312-00	.GASKET, OIL PAN	1	1	
3	90430-14M09	.GASKET	1	1	
4	63P-13415-00	.SEAL, OIL STRAINER	1	1	
5	63P-41133-A0	.GASKET, EXHAUST MANIFOLD 1	1	1	
6	69J-45123-00	.GASKET, MUFFLER	1	1	
7	63P-41134-A0	.GASKET, EXHAUST MANIFOLD	2	2	
8	63P-41138-00	.SEAL, EXT. 1	1	1	
9	69J-45127-00	.SEAL	1	1	
10	93210-07003	.O-RING	2	2	
11	90430-08020	.GASKET	2	2	
12	93210-58144	.O-RING	1	1	
13	93106-09014	.OIL SEAL	1	1	
14	93210-86M38	.O-RING	1	1	
15	93210-37160	.O-RING	1	1	
16	6E5-44315-A0	.GASKET, WATER PUMP	1	1	
17	93101-28M16	.OIL SEAL	2	2	
18	93210-55M14	.O-RING	1	1	
19	93101-30M17	.OIL SEAL	2	2	
20	93210-97M55	.O-RING	1	1	
21	61A-W0078-A3	WATER PUMP REPAIR KIT	1	1	
22	61A-44322-02	.INSERT, CARTRIDGE	1	1	
23	93210-86M38	.O-RING	1	1	
24	93210-37160	.O-RING	1	1	
25	6E5-44352-01	.IMPELLER	1	1	
26	6G5-44323-00	.OUTER PLATE, CARTRIDGE	1	1	
27	6E5-44315-A0	.GASKET, WATER PUMP	1	1	

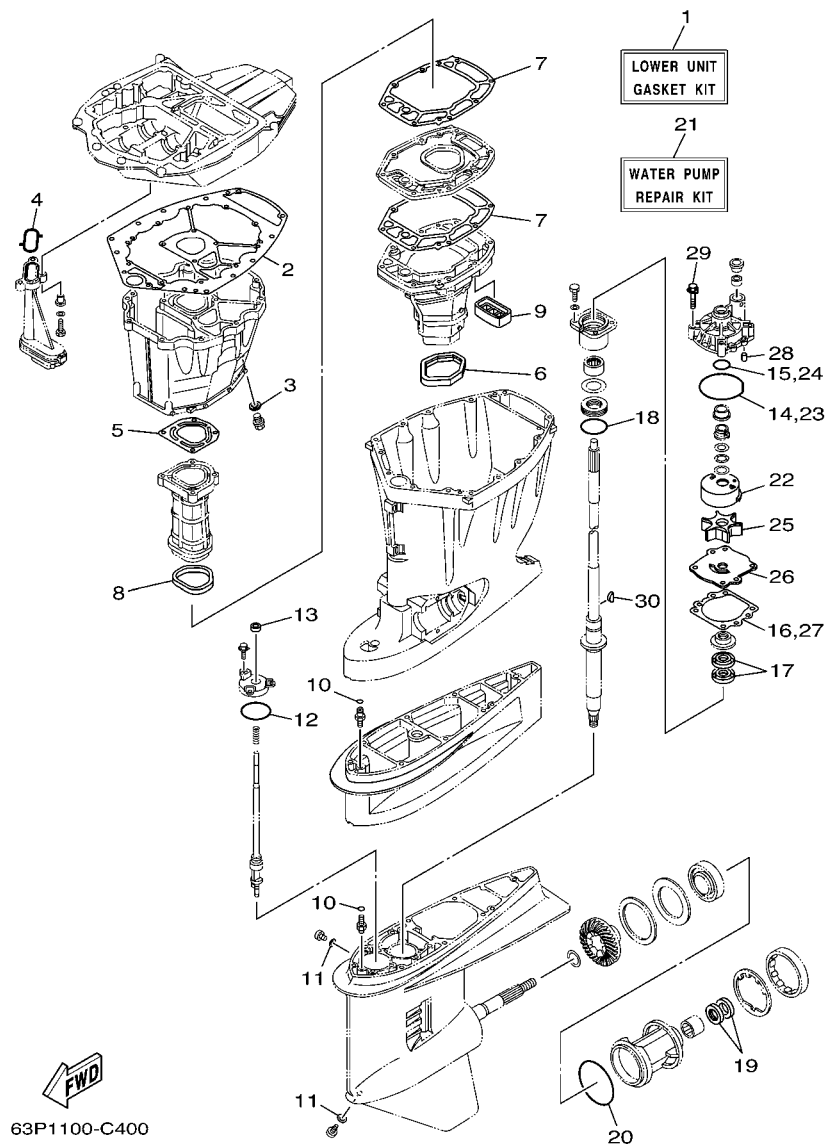


FIG. 31 REPAIR KIT 2

REF. NO.	PART NO.	DESCRIPTION	TLR	TXR	REMARKS
28	93606-12019	.PIN, DOWEL	2	2	
29	90119-08M14	.BOLT, WITH WASHER	4	4	
30	90280-04M05	.KEY, WOODRUFF	1	1	
-----					
-----					
-----					
-----					
-----					
-----					
-----					
-----					
-----					







NUMERICAL INDEX

PART NO.	REF. NO.	PART NO.	REF. NO.	PART NO.	REF. NO.	PART NO.	REF. NO.	PART NO.	REF. NO.	PART NO.	REF. NO.
92995-06100	16 - 13	93106-09014	31 - 13	93605-17002	6 - 19	97095-06020	26 - 26				
	17 - 5	93210-07003	25 - 38	93606-12019	2 - 3	97095-06025	15 - 12				
	17 - 9		27 - 13		27 - 35		20 - 43				
	21 - 5		31 - 10		31 - 28		20 - 56				
	26 - 27	93210-09165	20 - 21	93606-19M23	25 - 16	97095-06030	4 - 26				
92995-06600	1 - 10	93210-10M74	23 - 4	93608-16M16	25 - 5		21 - 4				
	4 - 27	93210-16275	29 - 9		25 - 23	97095-06035	14 - 8				
	5 - 38	93210-19MJ1	5 - 31		25 - 39		20 - 49				
	5 - 41		30 - 18		26 - 5	97095-06040	26 - 20				
	8 - 7	93210-19MJ3	26 - 25		28 - 7	97095-06045	5 - 37				
	12 - 14		30 - 19	93700-06M01	20 - 34	97095-08014	4 - 8				
	14 - 10	93210-24M79	5 - 34	93700-06M03	20 - 36	97095-08016	17 - 30				
	14 - 17		30 - 20		21 - 13	97095-08020	21 - 15				
	14 - 22	93210-25552	2 - 14		21 - 23	97095-08025	27 - 44				
	15 - 14		26 - 22	94702-00391	4 - 32	97575-06535	20 - 26				
	16 - 3		30 - 6	95333-08600	18 - 33	97575-06540	5 - 32				
	16 - 9	93210-25647	2 - 8	95380-05700	9 - 18	97575-08540	4 - 17				
	16 - 14		30 - 7	95380-06600	1 - 6		5 - 17				
	17 - 6	93210-30682	12 - 36		1 - 24		7 - 1				
	17 - 10	93210-37160	27 - 28		19 - 37	97575-08560	25 - 11				
	17 - 12		31 - 15	95380-12600	21 - 43	97575-10535	25 - 7				
	17 - 28		31 - 24	95380-14600	22 - 24	97595-06516	9 - 15				
	21 - 8	93210-37MH7	22 - 11	95780-10300	22 - 7	97595-06550	20 - 14				
	21 - 12	93210-55M14	27 - 42	97013-06020	16 - 15	97607-04208	4 - 24				
	21 - 39		31 - 18	97013-08020	7 - 2	97607-04310	24 - 32				
	26 - 21	93210-58144	27 - 15	97013-08045	18 - 30	97780-50620	1 - 3				
	26 - 28		31 - 12	97027-06025	26 - 12		16 - 37				
92995-08100	21 - 16	93210-86M38	27 - 27	97075-08035	25 - 14	97780-60520	19 - 29				
92995-08600	17 - 31		31 - 14		26 - 3	97780-60620	16 - 6				
	25 - 15		31 - 23	97075-10030	23 - 32		16 - 24				
	26 - 4	93210-97M55	27 - 67	97075-10045	22 - 30		16 - 28				
	27 - 45		31 - 20		25 - 3	97880-06016	25 - 27				
92995-10600	22 - 8	93306-209U0	27 - 62	97095-06010	16 - 7	97885-04016	20 - 12				
	22 - 31	93311-928U5	27 - 3		16 - 12	97885-06010	14 - 16				
	23 - 33	93315-425V3	27 - 50		21 - 7	97885-06012	21 - 11				
	25 - 4	93315-43061	27 - 65		21 - 26	97885-06016	22 - 4				
92995-14600	22 - 25	93317-330U2	27 - 39		21 - 38	98780-05016	2 - 12				
	22 - 35	93332-000V3	27 - 4	97095-06012	5 - 40	99001-08600	27 - 19				
93101-28M16	27 - 38	93341-930V2	27 - 41		17 - 11	99530-08012	14 - 7				
	31 - 17	93410-16006	20 - 24		17 - 27						
93101-30M17	27 - 66	93410-22M11	21 - 37	97095-06014	12 - 13						
	31 - 19	93410-37M04	22 - 15	97095-06016	1 - 9						
93102-08M43	24 - 36	93420-36M01	25 - 25		8 - 6						
93102-38M59	6 - 14	93501-04M02	20 - 28		14 - 21						
	30 - 14	93503-16003	27 - 57		16 - 2						
93102-60004	3 - 3	93507-32009	27 - 55	97095-06020	17 - 4						
	30 - 13	93511-32017	27 - 56		17 - 8						
93106-09014	27 - 16	93605-10108	6 - 11		19 - 15						